



[Go to Product page](#)

Datasheet for ABIN7172391

anti-TALDO1 antibody (AA 9-337)

3 Images

Overview

Quantity:	100 µg
Target:	TALDO1
Binding Specificity:	AA 9-337
Reactivity:	Human
Host:	Rabbit
Clonality:	Polyclonal
Conjugate:	This TALDO1 antibody is un-conjugated
Application:	Western Blotting (WB), ELISA, Immunohistochemistry (IHC)

Product Details

Immunogen:	Recombinant Human Transaldolase protein (9-337AA)
Isotype:	IgG
Cross-Reactivity:	Human
Purification:	>95%, Protein G purified

Target Details

Target:	TALDO1
Alternative Name:	TALDO1 (TALDO1 Products)
Background:	Background: Transaldolase is important for the balance of metabolites in the pentose-phosphate pathway.

Target Details

Aliases: Dihydroxyacetone transferase antibody, EC 2.2.1.2 antibody, EPS8L2 antibody, Glycerone transferase antibody, TAL antibody, TAL H antibody, TALDO antibody, TALDO_HUMAN antibody, TALDO1 antibody, TALDOR antibody, TALH antibody, Transaldolase 1 antibody, Transaldolase antibody

UniProt: [P37837](#)

Application Details

Application Notes: Recommended dilution: WB:1:500-1:2000, IHC:1:20-1:200,

Restrictions: For Research Use only

Handling

Format: Liquid

Buffer: Preservative: 0.03 % Proclin 300
Constituents: 50 % Glycerol, 0.01M PBS, PH 7.4

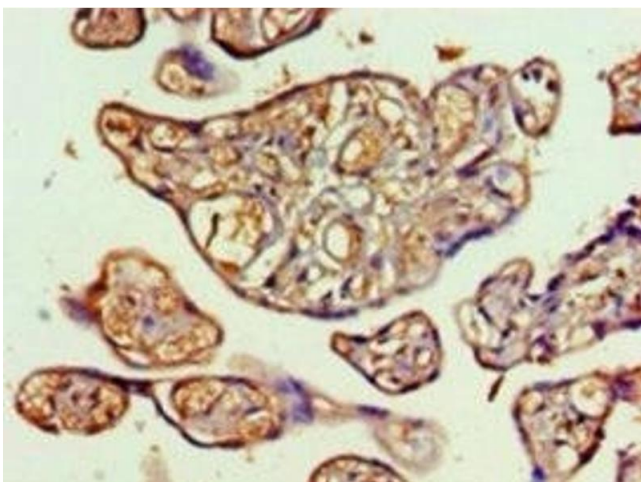
Preservative: ProClin

Precaution of Use: This product contains ProClin: a POISONOUS AND HAZARDOUS SUBSTANCE which should be handled by trained staff only.

Storage: -20 °C,-80 °C

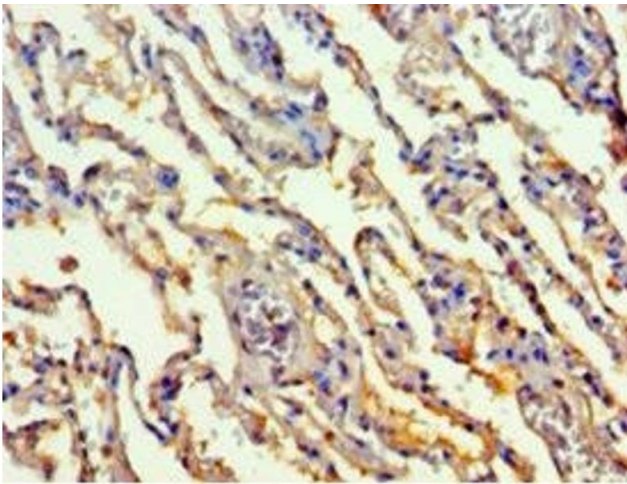
Storage Comment: Upon receipt, store at -20°C or -80°C. Avoid repeated freeze.

Images



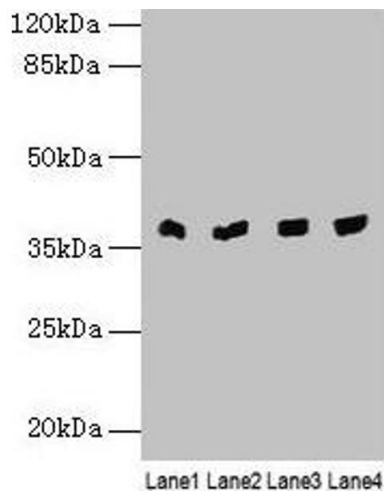
Immunohistochemistry

Image 1. Immunohistochemistry of paraffin-embedded human placenta tissue using ABIN7172391 at dilution of 1:100



Immunohistochemistry

Image 2. Immunohistochemistry of paraffin-embedded human lung tissue using ABIN7172391 at dilution of 1:100



Western Blotting

Image 3. Western blot All lanes: TALDO1 antibody at 0.1 μ g/mL Lane 1: Human placenta tissue Lane 2: Hela whole cell lysate Lane 3: Jurkat whole cell lysate Lane 4: A375 whole cell lysate Secondary Goat polyclonal to rabbit IgG at 1/10000 dilution Predicted band size: 38 kDa Observed band size: 38 kDa