

Datasheet for ABIN7172505
anti-DP2 antibody (AA 344-386)

3 Images

[Go to Product page](#)

Overview

Quantity:	100 µg
Target:	DP2 (TFDP2)
Binding Specificity:	AA 344-386
Reactivity:	Human
Host:	Rabbit
Clonality:	Polyclonal
Conjugate:	This DP2 antibody is un-conjugated
Application:	Western Blotting (WB), ELISA, Immunohistochemistry (IHC)

Product Details

Immunogen:	Recombinant Human Transcription factor Dp-2 protein (344-386AA)
Isotype:	IgG
Cross-Reactivity:	Human, Mouse
Purification:	>95%, Protein G purified

Target Details

Target:	DP2 (TFDP2)
Alternative Name:	TFDP2 (TFDP2 Products)
Background:	Background: Can stimulate E2F-dependent transcription. Binds DNA cooperatively with E2F family members through the E2 recognition site, 5\'-TTTC[CG]CGC-3\', found in the

Target Details

promoter region of a number of genes whose products are involved in cell cycle regulation or in DNA replication. The TFDP2:E2F complex functions in the control of cell-cycle progression from G1 to S phase. The E2F1:DP complex appears to mediate both cell proliferation and apoptosis. Blocks adipocyte differentiation by repressing CEBPA binding to its target gene promoters (PubMed:20176812).

Aliases: DP2 antibody, E2F dimerization partner 2 antibody, Tfdp2 antibody, TFDP2_HUMAN antibody, Transcription factor Dp 2 antibody, Transcription factor Dp-2 antibody

UniProt: [Q14188](#)

Pathways: [Cell Division Cycle](#), [Mitotic G1-G1/S Phases](#)

Application Details

Application Notes: Recommended dilution: WB:1:1000-1:5000, IHC:1:20-1:200,

Restrictions: For Research Use only

Handling

Format: Liquid

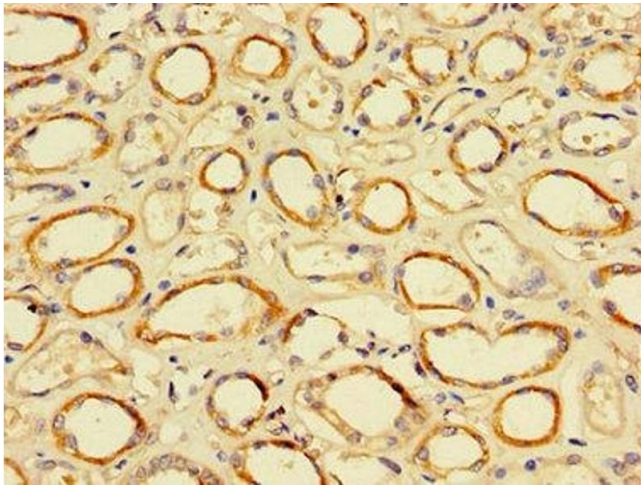
Buffer: Preservative: 0.03 % Proclin 300
Constituents: 50 % Glycerol, 0.01M PBS, PH 7.4

Preservative: ProClin

Precaution of Use: This product contains ProClin: a POISONOUS AND HAZARDOUS SUBSTANCE which should be handled by trained staff only.

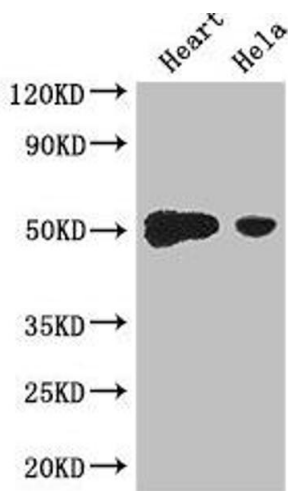
Storage: -20 °C,-80 °C

Storage Comment: Upon receipt, store at -20°C or -80°C. Avoid repeated freeze.



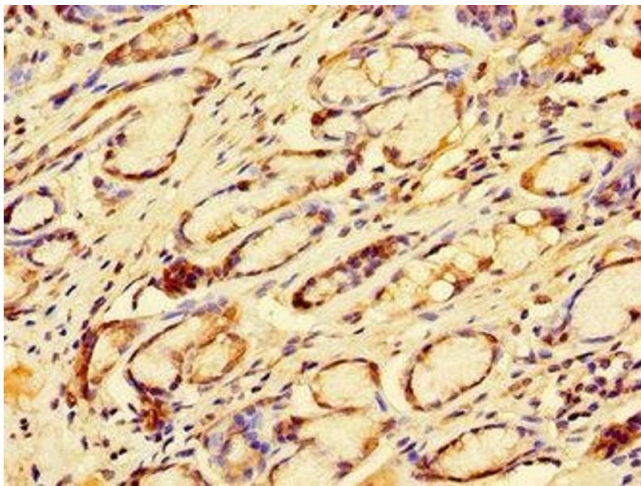
Immunohistochemistry

Image 1. Immunohistochemistry of paraffin-embedded human kidney tissue using ABIN7172505 at dilution of 1:100



Western Blotting

Image 2. Western Blot Positive WB detected in: Mouse heart tissue, HeLa whole cell lysate All lanes: TFDP2 antibody at 3.2 µg/mL Secondary Goat polyclonal to rabbit IgG at 1/50000000 dilution Predicted band size: 50, 41, 42, 43, 40, 35, 47 kDa Observed band size: 50 kDa



Immunohistochemistry

Image 3. Immunohistochemistry of paraffin-embedded human gastric cancer using ABIN7172505 at dilution of 1:100