

Datasheet for ABIN7172530  
**anti-TFE3 antibody (AA 1-110)**[Go to Product page](#)

## 2 Images

## Overview

|                      |  |
|----------------------|--|
| Quantity:            | 100 µg   |
| Target:              | TFE3   |
| Binding Specificity: | AA 1-110   |
| Reactivity:          | Human  |
| Host:                | Rabbit   |
| Clonality:           | Polyclonal   |
| Conjugate:           | This TFE3 antibody is un-conjugated                      |
| Application:         | Western Blotting (WB), ELISA, Immunohistochemistry (IHC) |

## Product Details

|                   |   |
|-------------------|---|
| Immunogen:        | Recombinant Human Transcription factor E3 protein (1-110AA) |
| Isotype:          | IgG   |
| Cross-Reactivity: | Human   |
| Purification:     | >95%, Protein G purified                                    |

## Target Details

|                   |   |
|-------------------|---|
| Target:           | TFE3  |
| Alternative Name: | TFE3 ( <a href="#">TFE3 Products</a> )  |
| Background:       | Background: Transcription factor that specifically recognizes and binds E-box sequences (5\'-CANNTG-3\'). Efficient DNA-binding requires dimerization with itself or with another MiT/TFE |

## Target Details

family member such as TFEB or MITF. In association with TFEB, activates the expression of CD40L in T-cells, thereby playing a role in T-cell-dependent antibody responses in activated CD4(+) T-cells and thymus-dependent humoral immunity. Specifically recognizes the MUE3 box, a subset of E-boxes, present in the immunoglobulin enhancer. It also binds very well to a USF/MLTF site.

Aliases: bHLH e33 antibody, bHLHe33 antibody, Class E basic helix-loop-helix protein 33 antibody, RCCP 2 antibody, RCCP2 antibody, RCCX1 antibody, Renal cell carcinoma, papillary antibody, Tcfe 3 antibody, Tcfe3 antibody, TFE 3 antibody, Tfe3 antibody, TFE3\_HUMAN antibody, TFEA antibody, Transcription factor binding to IGHM enhancer 3 antibody, Transcription factor E family, member A antibody, Transcription factor E3 antibody, Transcription factor for IgH enhancer antibody, Transcription factor for immunoglobulin heavy chain enhancer 3 antibody

UniProt: [P19532](#)

## Application Details

Application Notes: Recommended dilution: WB:1:1000-1:5000, IHC:1:20-1:200,

Restrictions: For Research Use only

## Handling

Format: Liquid

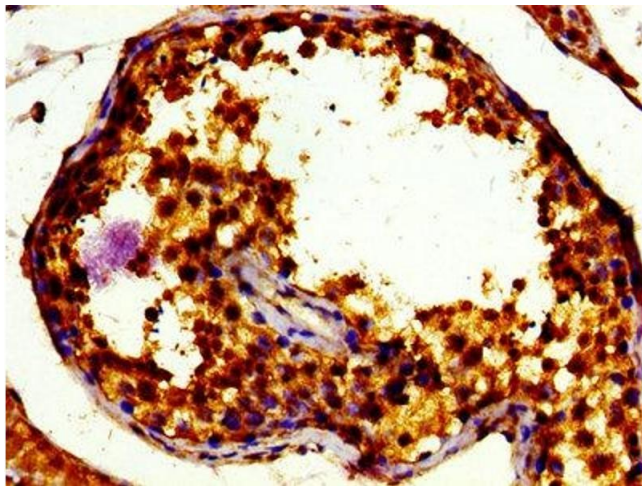
Buffer: Preservative: 0.03 % Proclin 300  
Constituents: 50 % Glycerol, 0.01M PBS, pH 7.4

Preservative: ProClin

Precaution of Use: This product contains ProClin: a POISONOUS AND HAZARDOUS SUBSTANCE which should be handled by trained staff only.

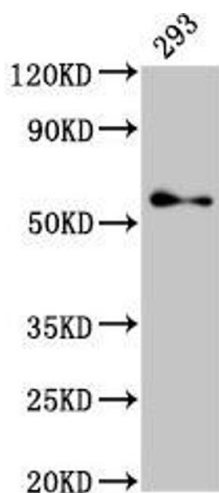
Storage: -20 °C, -80 °C

Storage Comment: Upon receipt, store at -20°C or -80°C. Avoid repeated freeze.



### Immunohistochemistry

**Image 1.** Immunohistochemistry of paraffin-embedded human testis tissue using ABIN7172530 at dilution of 1:100



### Western Blotting

**Image 2.** Western Blot Positive WB detected in: 293 whole cell lysate All lanes: TFE3 antibody at 2.7 µg/mL Secondary Goat polyclonal to rabbit IgG at 1/50000 dilution Predicted band size: 62, 12 kDa Observed band size: 62 kDa