



[Go to Product page](#)

Datasheet for ABIN7172536

## anti-TFEB antibody (AA 1-476)

### 3 Images

#### Overview

Quantity:	100 µg
Target:	TFEB
Binding Specificity:	AA 1-476
Reactivity:	Human
Host:	Rabbit
Clonality:	Polyclonal
Conjugate:	This TFEB antibody is un-conjugated
Application:	Western Blotting (WB), ELISA, Immunohistochemistry (IHC), Immunofluorescence (IF)

#### Product Details

Immunogen:	Recombinant Human Transcription factor EB protein (1-476AA)
Isotype:	IgG
Cross-Reactivity:	Human, Rat
Purification:	>95%, Protein G purified

#### Target Details

Target:	TFEB
Alternative Name:	TFEB ( <a href="#">TFEB Products</a> )
Background:	Background: Transcription factor that specifically recognizes and binds E-box sequences (5'CANNTG-3'). Efficient DNA-binding requires dimerization with itself or with another MiT/TFE

## Target Details

---

family member such as TFE3 or MITF. In association with TFE3, activates the expression of CD40L in T-cells, thereby playing a role in T-cell-dependent antibody responses in activated CD4(+) T-cells and thymus-dependent humoral immunity. Specifically recognizes and binds the CLEAR-box sequence (5\'-GTCACGTGAC-3\') present in the regulatory region of many lysosomal genes, leading to activate their expression. It thereby plays a central role in expression of lysosomal genes. Acts as a positive regulator of autophagy by promoting expression of genes involved in autophagy. Specifically recognizes the gamma-E3 box, a subset of E-boxes, present in the heavy-chain immunoglobulin enhancer. Plays a role in the signal transduction processes required for normal vascularization of the placenta.

Aliases: Alpha TFEB antibody, AlphaTFEB antibody, bHLHe35 antibody, Class E basic helix-loop-helix protein 35 antibody, T cell transcription factor EB antibody, TCFEB antibody, TFEB antibody, TFEB\_HUMAN antibody, Transcription factor EB antibody

---

UniProt: [P19484](#)

## Application Details

---

Application Notes: Recommended dilution: WB:1:500-1:5000, IHC:1:20-1:200, IF:1:50-1:200,

Restrictions: For Research Use only

## Handling

---

Format: Liquid

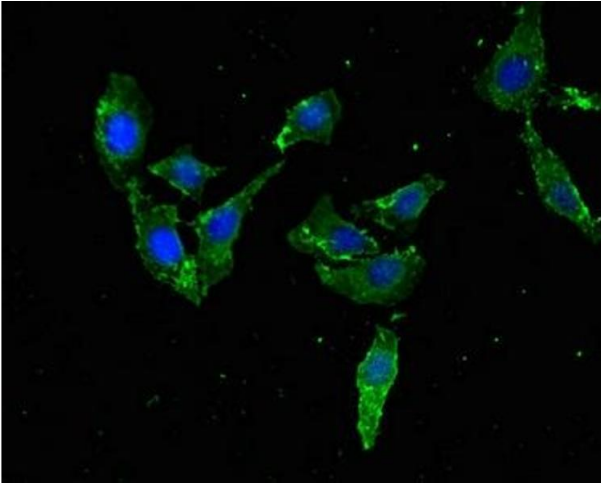
Buffer: Preservative: 0.03 % Proclin 300  
Constituents: 50 % Glycerol, 0.01M PBS, pH 7.4

Preservative: ProClin

Precaution of Use: This product contains ProClin: a POISONOUS AND HAZARDOUS SUBSTANCE which should be handled by trained staff only.

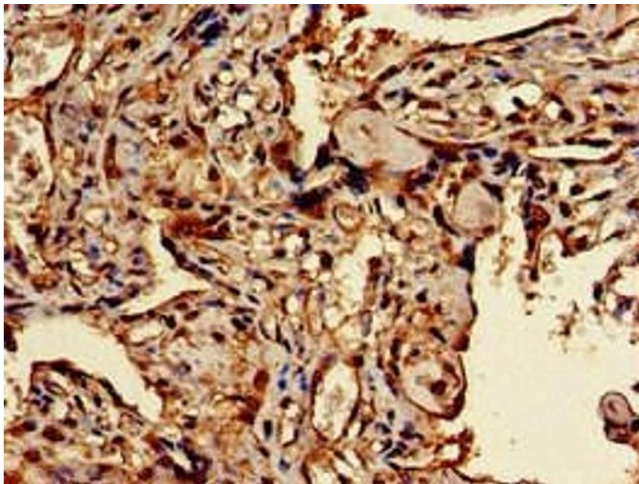
Storage: -20 °C,-80 °C

Storage Comment: Upon receipt, store at -20°C or -80°C. Avoid repeated freeze.



### Immunofluorescence

**Image 1.** Immunofluorescent analysis of HeLa cells using ABIN7172536 at dilution of 1:100 and Alexa Fluor 488-conjugated AffiniPure Goat Anti-Rabbit IgG(H+L)



### Immunohistochemistry

**Image 2.** Immunohistochemistry of paraffin-embedded human placenta tissue using ABIN7172536 at dilution of 1:100



### Western Blotting

**Image 3.** Western Blot Positive WB detected in: Rat lung tissue All lanes: TFEB antibody at 3 µg/mL Secondary Goat polyclonal to rabbit IgG at 1/50000 dilution Predicted band size: 53, 44 kDa Observed band size: 70 kDa