

Datasheet for ABIN7172781  
**anti-CTCFL antibody (AA 1-270)**[Go to Product page](#)

## 2 Images

## Overview

Quantity:	100 µL
Target:	CTCFL
Binding Specificity:	AA 1-270
Reactivity:	Human
Host:	Rabbit
Clonality:	Polyclonal
Conjugate:	This CTCFL antibody is un-conjugated
Application:	ELISA, Immunohistochemistry (IHC)

## Product Details

Immunogen:	Recombinant Human Transcriptional repressor CTCFL protein (1-270AA)
Isotype:	IgG
Cross-Reactivity:	Human
Purification:	Antigen Affinity Purified

## Target Details

Target:	CTCFL
Alternative Name:	CTCFL ( <a href="#">CTCFL Products</a> )
Background:	Background: Testis-specific DNA binding protein responsible for insulator function, nuclear architecture and transcriptional control, which probably acts by recruiting epigenetic chromatin

## Target Details

modifiers. Plays a key role in gene imprinting in male germline, by participating in the establishment of differential methylation at the IGF2/H19 imprinted control region (ICR). Directly binds the unmethylated H19 ICR and recruits the PRMT7 methyltransferase, leading to methylate histone H4 \\Arg-3\\ to form H4R3sme2. This probably leads to recruit de novo DNA methyltransferases at these sites (By similarity). Seems to act as tumor suppressor. In association with DNMT1 and DNMT3B, involved in activation of BAG1 gene expression by binding to its promoter. Required for dimethylation of H3 lysine 4 (H3K4me2) of MYC and BRCA1 promoters.

Aliases: BORIS like protein antibody, Brother of the regulator of imprinted sites antibody, Cancer/testis antigen 27 antibody, CCCTC binding factor (zinc finger protein) like antibody, CCCTC-binding factor antibody, CT27 antibody, CTCF paralog antibody, CTCF T antibody, CTCF-like protein antibody, Ctcfl antibody, CTCFL\_HUMAN antibody, dJ579F20.2 antibody, HMG 1L1 antibody, HMGB1L1 antibody, MGC163358 antibody, MGC169105 antibody, MGC169106 antibody, Putative high mobility group protein 1 like 1 antibody, Putative high mobility group protein B1 like 1 antibody, Transcriptional repressor CTCFL antibody, Zinc finger protein CTCF-T antibody

UniProt: [Q8NI51](#)

## Application Details

Application Notes: Recommended dilution: IHC:1:20-1:200,

Restrictions: For Research Use only

## Handling

Format: Liquid

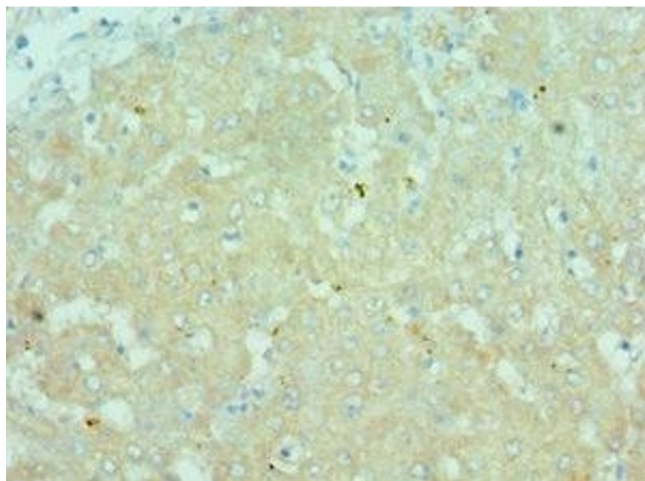
Buffer: PBS with 0.02 % sodium azide, 50 % glycerol, pH 7.3.

Preservative: Sodium azide

Precaution of Use: This product contains Sodium azide: a POISONOUS AND HAZARDOUS SUBSTANCE which should be handled by trained staff only.

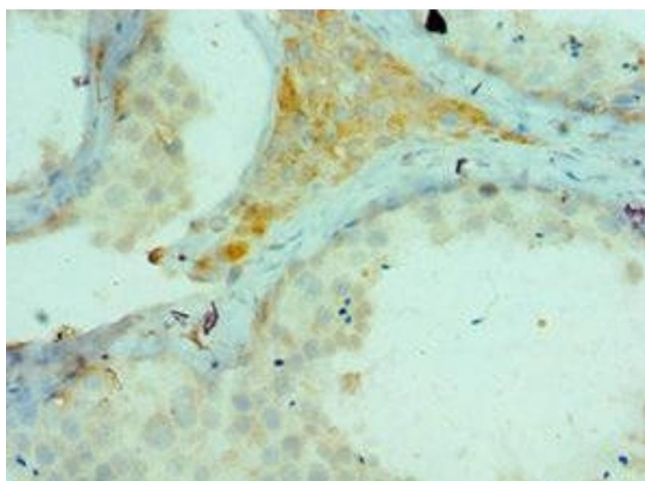
Storage: -20 °C,-80 °C

Storage Comment: Upon receipt, store at -20°C or -80°C. Avoid repeated freeze.



#### Immunohistochemistry

**Image 1.** Immunohistochemistry of paraffin-embedded human liver tissue using ABIN7172781 at dilution of 1:100



#### Immunohistochemistry

**Image 2.** Immunohistochemistry of paraffin-embedded human testis tissue using ABIN7172781 at dilution of 1:100