



[Go to Product page](#)

Datasheet for ABIN7172863

## anti-TRPM3 antibody (AA 1606-1713)

### 1 Image

#### Overview

Quantity:	100 µg
Target:	TRPM3
Binding Specificity:	AA 1606-1713
Reactivity:	Human
Host:	Rabbit
Clonality:	Polyclonal
Conjugate:	This TRPM3 antibody is un-conjugated
Application:	ELISA, Immunofluorescence (IF)

#### Product Details

Immunogen:	Recombinant Human Transient receptor potential cation channel subfamily M member 3 protein (1606-1713AA)
Isotype:	IgG
Cross-Reactivity:	Human
Purification:	>95%, Protein G purified

#### Target Details

Target:	TRPM3
Alternative Name:	TRPM3 ( <a href="#">TRPM3 Products</a> )
Background:	Background: Calcium channel mediating constitutive calcium ion entry. Its activity is increased

## Target Details

by reduction in extracellular osmolarity, by store depletion and muscarinic receptor activation.

Aliases: TRPM3 antibody, KIAA1616 antibody, LTRPC3 antibody, Transient receptor potential cation channel subfamily M member 3 antibody, Long transient receptor potential channel 3 antibody, LTrpC-3 antibody, LTrpC3 antibody, Melastatin-2 antibody, MLSN2 antibody

UniProt: [Q9HCF6](#)

## Application Details

Application Notes: Recommended dilution: IF:1:50-1:200,

Restrictions: For Research Use only

## Handling

Format: Liquid

Buffer: Preservative: 0.03 % Proclin 300  
Constituents: 50 % Glycerol, 0.01M PBS, pH 7.4

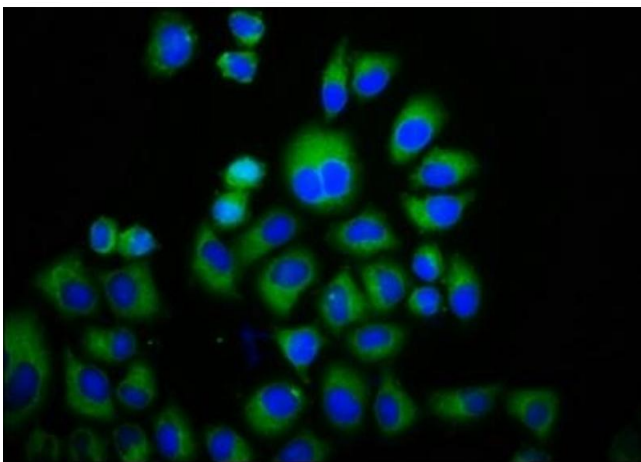
Preservative: ProClin

Precaution of Use: This product contains ProClin: a POISONOUS AND HAZARDOUS SUBSTANCE which should be handled by trained staff only.

Storage: -20 °C,-80 °C

Storage Comment: Upon receipt, store at -20°C or -80°C. Avoid repeated freeze.

## Images



### Immunofluorescence

**Image 1.** Immunofluorescence staining of HeLa cells with ABIN7172863 at 1:133, counter-stained with DAPI. The cells were fixed in 4% formaldehyde, permeabilized using 0.2% Triton X-100 and blocked in 10% normal Goat Serum. The cells were then incubated with the antibody overnight at 4°C. The secondary antibody was Alexa Fluor 488-conjugated AffiniPure Goat Anti-Rabbit IgG(H+L).