



[Go to Product page](#)

Datasheet for ABIN7172889
anti-TRPV6 antibody (AA 620-764)

1 Image

Overview

Quantity:	100 µg
Target:	TRPV6
Binding Specificity:	AA 620-764
Reactivity:	Human
Host:	Rabbit
Clonality:	Polyclonal
Conjugate:	This TRPV6 antibody is un-conjugated
Application:	ELISA, Immunohistochemistry (IHC)

Product Details

Immunogen:	Recombinant Human Transient receptor potential cation channel subfamily V member 6 protein (620-764AA)
Isotype:	IgG
Cross-Reactivity:	Human
Purification:	>95%, Protein G purified

Target Details

Target:	TRPV6
Alternative Name:	TRPV6 (TRPV6 Products)
Background:	Background: Calcium selective cation channel that mediates Ca(2+) uptake in various tissues,

Target Details

including the intestine (PubMed:11097838, PubMed:11278579, PubMed:11248124 PubMed:15184369, PubMed:23612980). Important for normal Ca(2+) ion homeostasis in the body, including bone and skin (By similarity). The channel is activated by low internal calcium level, probably including intracellular calcium store depletion, and the current exhibits an inward rectification (PubMed:15184369). Inactivation includes both a rapid Ca(2+)-dependent and a slower Ca(2+)-calmodulin-dependent mechanism, the latter may be regulated by phosphorylation. In vitro, is slowly inhibited by Mg(2+) in a voltage-independent manner. Heteromeric assembly with TRPV5 seems to modify channel properties. TRPV5-TRPV6 heteromultimeric concatemers exhibit voltage-dependent gating.

Aliases: ABP/ZF antibody, ABPZF antibody, Alu binding protein with zinc finger domain antibody, Calcium channel CaT1 antibody, Calcium transport protein 1 antibody, CaT L antibody, CaT Like antibody, CaT-L antibody, CaT-like antibody, CaT1 antibody, ecac antibody, ECac2 antibody, Epithelial apical membrane calcium transporter/channel CaT1 antibody, Epithelial calcium channel 2 antibody, Epithelial calcium channel antibody, HSA277909 antibody, LP6728 antibody, MGC162545 antibody, NUDC antibody, Transient receptor potential cation channel subfamily V member 6 antibody, TrpV6 antibody, TRPV6_HUMAN antibody, ZFAB antibody

UniProt: [Q9H1D0](#)

Pathways: [TCR Signaling](#)

Application Details

Application Notes: Recommended dilution: IHC:1:200-1:500,

Restrictions: For Research Use only

Handling

Format: Liquid

Buffer: Preservative: 0.03 % Proclin 300
Constituents: 50 % Glycerol, 0.01M PBS, pH 7.4

Preservative: ProClin

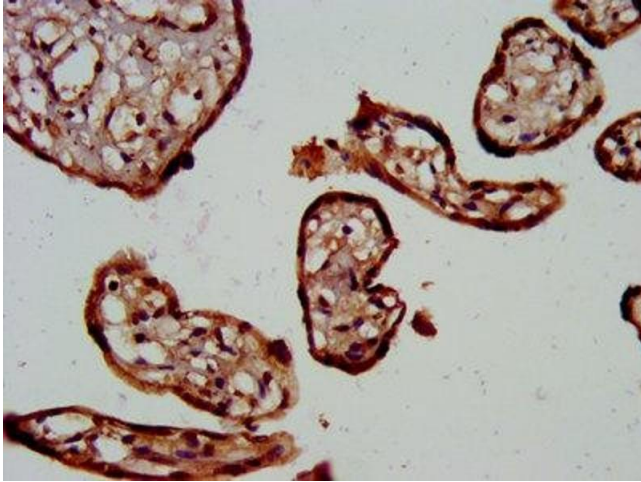
Precaution of Use: This product contains ProClin: a POISONOUS AND HAZARDOUS SUBSTANCE which should be handled by trained staff only.

Storage: -20 °C,-80 °C

Handling

Storage Comment: Upon receipt, store at -20°C or -80°C. Avoid repeated freeze.

Images



Immunohistochemistry

Image 1. IHC image of ABIN7172889 diluted at 1:300 and staining in paraffin-embedded human placenta tissue performed on a Leica Bond™ system. After dewaxing and hydration, antigen retrieval was mediated by high pressure in a citrate buffer (pH 6.0). Section was blocked with 10% normal goat serum 30min at RT. Then primary antibody (1% BSA) was incubated at 4°C overnight. The primary is detected by a biotinylated secondary antibody and visualized using an HRP conjugated SP system.