



[Go to Product page](#)

Datasheet for ABIN7172902
anti-EIF2B1 antibody (AA 1-305)

3 Images

Overview

Quantity:	100 µL
Target:	EIF2B1
Binding Specificity:	AA 1-305
Reactivity:	Human
Host:	Rabbit
Clonality:	Polyclonal
Conjugate:	This EIF2B1 antibody is un-conjugated
Application:	Western Blotting (WB), ELISA, Immunohistochemistry (IHC)

Product Details

Immunogen:	Recombinant Human Translation initiation factor eIF-2B subunit alpha protein (1-305AA)
Isotype:	IgG
Cross-Reactivity:	Human, Mouse
Purification:	Antigen Affinity Purified

Target Details

Target:	EIF2B1
Alternative Name:	EIF2B1 (EIF2B1 Products)
Background:	Background: Catalyzes the exchange of eukaryotic initiation factor 2-bound GDP for GTP. Aliases: EI2BA_HUMAN antibody, eIF-2B GDP-GTP exchange factor subunit alpha antibody,

Target Details

EIF2B antibody, Eif2b1 antibody, EIF2BA antibody, Eukaryotic translation initiation factor 2B subunit 1 alpha 26 kDa antibody, Eukaryotic translation initiation factor 2B subunit alpha antibody, Translation initiation factor eIF-2B subunit alpha antibody

UniProt: [Q14232](#)

Pathways: [Methionine Biosynthetic Process](#)

Application Details

Application Notes: Recommended dilution: WB:1:1000-1:5000, IHC:1:20-1:200,

Restrictions: For Research Use only

Handling

Format: Liquid

Buffer: PBS with 0.02 % sodium azide, 50 % glycerol, pH 7.3.

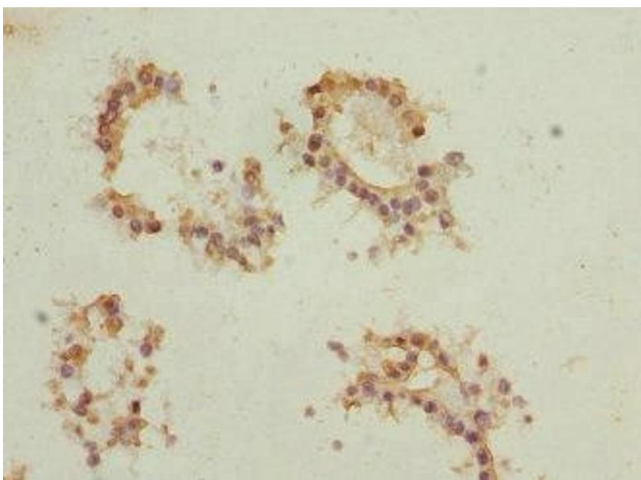
Preservative: Sodium azide

Precaution of Use: This product contains Sodium azide: a POISONOUS AND HAZARDOUS SUBSTANCE which should be handled by trained staff only.

Storage: -20 °C,-80 °C

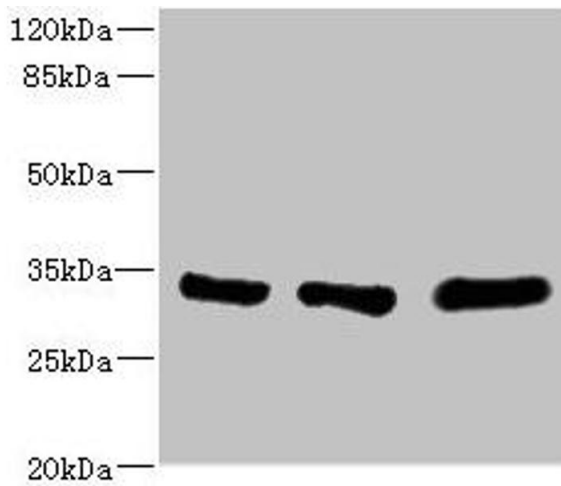
Storage Comment: Upon receipt, store at -20°C or -80°C. Avoid repeated freeze.

Images



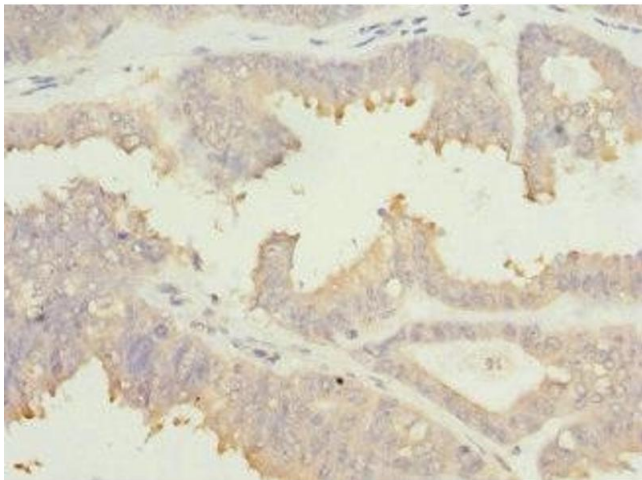
Immunohistochemistry

Image 1. Immunohistochemistry of paraffin-embedded human breast cancer using ABIN7172902 at dilution of 1:100



Western Blotting

Image 2. Western blot All lanes: EIF2B1 antibody at 5.14 μ g/mL Lane 1: K562 whole cell lysate Lane 2: Mouse brain tissue Lane 3: Jurkat whole cell lysate Secondary Goat polyclonal to rabbit IgG at 1/10000 dilution Predicted band size: 34, 25 kDa Observed band size: 34 kDa



Immunohistochemistry

Image 3. Immunohistochemistry of paraffin-embedded human prostate cancer using ABIN7172902 at dilution of 1:100