

Datasheet for ABIN7172906  
**anti-TPT1 antibody (AA 1-172)**[Go to Product page](#)

## 2 Images

## Overview

Quantity:	100 µg
Target:	TPT1
Binding Specificity:	AA 1-172
Reactivity:	Human
Host:	Rabbit
Clonality:	Polyclonal
Conjugate:	This TPT1 antibody is un-conjugated
Application:	ELISA, Immunohistochemistry (IHC), Immunofluorescence (IF)

## Product Details

Immunogen:	Recombinant Human Translationally-controlled tumor protein (1-172AA)
Isotype:	IgG
Cross-Reactivity:	Human
Purification:	>95%, Protein G purified

## Target Details

Target:	TPT1
Alternative Name:	TPT1 ( <a href="#">TPT1 Products</a> )
Background:	Background: Involved in calcium binding and microtubule stabilization. Aliases: FLJ27337 antibody, Fortilin antibody, Histamine releasing factor antibody, Histamine-

## Target Details

releasing factor antibody, HRF antibody, Immunoglobulin E-dependent antibody, p02 antibody, p23 antibody, TCTP antibody, TCTP\_HUMAN antibody, tpt1 antibody, Translationally controlled tumor protein antibody, Translationally-controlled tumor protein antibody, Tumor protein translationally controlled 1 antibody, tumor protein, translationally-controlled 1 antibody

UniProt: [P13693](#)

Pathways: [Response to Water Deprivation](#), [Regulation of Cell Size](#), [Negative Regulation of intrinsic apoptotic Signaling](#)

## Application Details

Application Notes: Recommended dilution: IHC:1:20-1:200, IF:1:50-1:200,

Restrictions: For Research Use only

## Handling

Format: Liquid

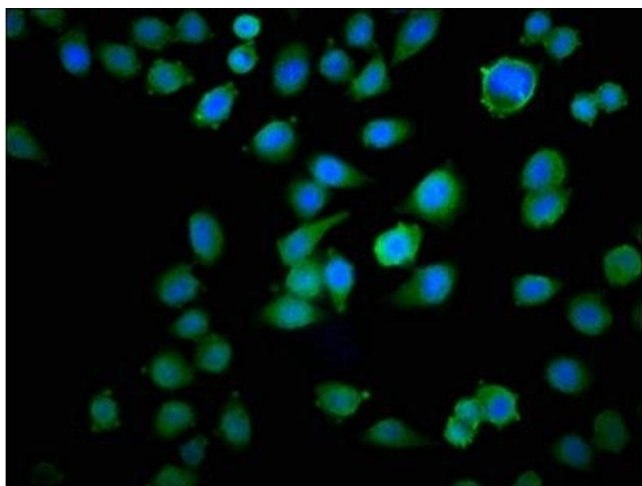
Buffer: Preservative: 0.03 % Proclin 300  
Constituents: 50 % Glycerol, 0.01M PBS, pH 7.4

Preservative: ProClin

Precaution of Use: This product contains ProClin: a POISONOUS AND HAZARDOUS SUBSTANCE which should be handled by trained staff only.

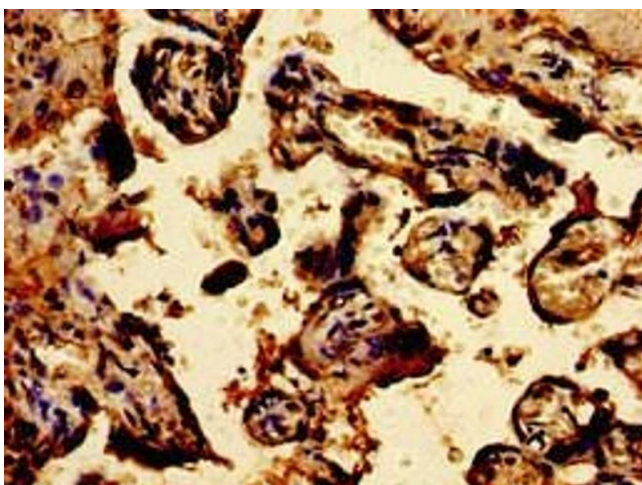
Storage: -20 °C, -80 °C

Storage Comment: Upon receipt, store at -20°C or -80°C. Avoid repeated freeze.



#### Immunofluorescence

**Image 1.** Immunofluorescence staining of HeLa cells with ABIN7172906 at 1:100, counter-stained with DAPI. The cells were fixed in 4% formaldehyde, permeabilized using 0.2% Triton X-100 and blocked in 10% normal Goat Serum. The cells were then incubated with the antibody overnight at 4°C. The secondary antibody was Alexa Fluor 488-conjugated AffiniPure Goat Anti-Rabbit IgG(H+L).



#### Immunohistochemistry

**Image 2.** Immunohistochemistry of paraffin-embedded human placenta tissue using ABIN7172906 at dilution of 1:100