



[Go to Product page](#)

Datasheet for ABIN7172922

anti-SSR3 antibody (AA 77-135)

4 Images

Overview

Quantity:	100 µg
Target:	SSR3 (SSRg)
Binding Specificity:	AA 77-135
Reactivity:	Human
Host:	Rabbit
Clonality:	Polyclonal
Conjugate:	This SSR3 antibody is un-conjugated
Application:	ELISA, Western Blotting (WB), Immunohistochemistry (IHC), Immunofluorescence (IF)

Product Details

Immunogen:	Recombinant Human Translocon-associated protein subunit gamma protein (77-135AA)
Isotype:	IgG
Cross-Reactivity:	Human
Purification:	>95%, Protein G purified

Target Details

Target:	SSR3 (SSRg)
Alternative Name:	SSR3 (SSRg Products)
Background:	Background: TRAP proteins are part of a complex whose function is to bind calcium to the ER membrane and thereby regulate the retention of ER resident proteins.

Target Details

Aliases: Signal sequence receptor gamma antibody, Signal sequence receptor subunit gamma antibody, SSR-gamma antibody, Ssr3 antibody, SSRG_HUMAN antibody, Translocon associated protein gamma subunit antibody, Translocon-associated protein subunit gamma antibody, TRAP complex gamma subunit antibody, TRAP-gamma antibody, TRAPG antibody

UniProt: [Q9UNL2](#)

Application Details

Application Notes: Recommended dilution: WB:1:500-1:2000, IHC:1:20-1:200, IF:1:50-1:200,

Restrictions: For Research Use only

Handling

Format: Liquid

Buffer: Preservative: 0.03 % Proclin 300
Constituents: 50 % Glycerol, 0.01M PBS, PH 7.4

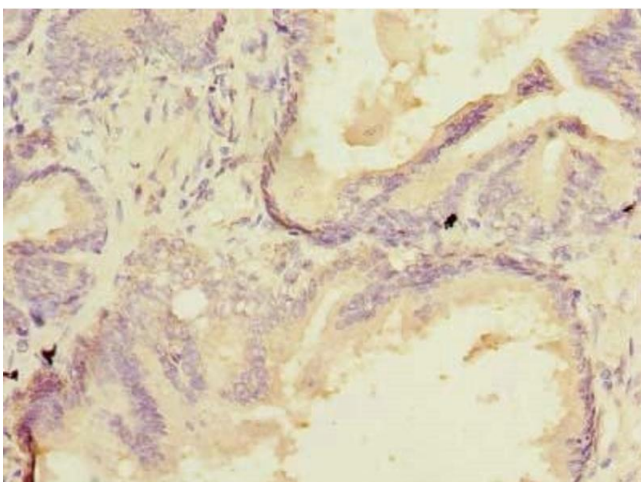
Preservative: ProClin

Precaution of Use: This product contains ProClin: a POISONOUS AND HAZARDOUS SUBSTANCE which should be handled by trained staff only.

Storage: -20 °C,-80 °C

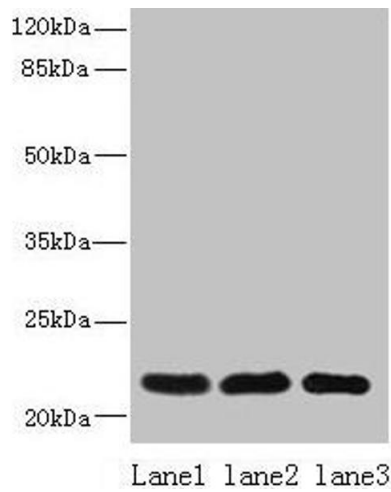
Storage Comment: Upon receipt, store at -20°C or -80°C. Avoid repeated freeze.

Images



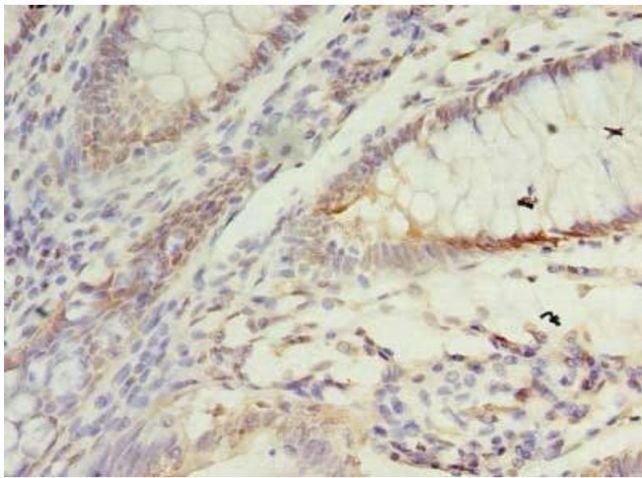
Immunohistochemistry

Image 1. Immunohistochemistry of paraffin-embedded human prostate cancer using ABIN7172922 at dilution of 1:100



Western Blotting

Image 2. Western blot All lanes: SSR3 antibody at 10 µg/mL
Lane 1: HeLa whole cell lysate Lane 2: U87 whole cell lysate
Lane 3: A431 whole cell lysate Secondary Goat polyclonal to rabbit IgG at 1/10000 dilution Predicted band size: 22, 23 kDa Observed band size: 22 kDa



Immunohistochemistry

Image 3. Immunohistochemistry of paraffin-embedded human colon cancer using ABIN7172922 at dilution of 1:100

Please check the [product details page](#) for more images. Overall 4 images are available for ABIN7172922.