



[Go to Product page](#)

Datasheet for ABIN7172938

anti-TM6SF2 antibody (AA 290-331)

3 Images

Overview

Quantity:	100 µg
Target:	TM6SF2
Binding Specificity:	AA 290-331
Reactivity:	Human
Host:	Rabbit
Clonality:	Polyclonal
Conjugate:	This TM6SF2 antibody is un-conjugated
Application:	ELISA, Immunohistochemistry (IHC), Immunofluorescence (IF)

Product Details

Immunogen:	Recombinant Human Transmembrane 6 superfamily member 2 protein (290-331AA)
Isotype:	IgG
Cross-Reactivity:	Human
Purification:	>95%, Protein G purified

Target Details

Target:	TM6SF2
Alternative Name:	TM6SF2 (TM6SF2 Products)
Background:	Background: Regulator of liver fat metabolism influencing triglyceride secretion and hepatic lipid droplet content (PubMed:24531328, PubMed:24927523). May function as sterol isomerase

Target Details

(PubMed:25566323).

Aliases: TM6S2_HUMAN antibody, Tm6sf2 antibody, Transmembrane 6 superfamily member 2 antibody

UniProt: [Q9BZW4](#)

Application Details

Application Notes: Recommended dilution: IHC:1:20-1:200, IF:1:50-1:200,

Restrictions: For Research Use only

Handling

Format: Liquid

Buffer: Preservative: 0.03 % Proclin 300
Constituents: 50 % Glycerol, 0.01M PBS, pH 7.4

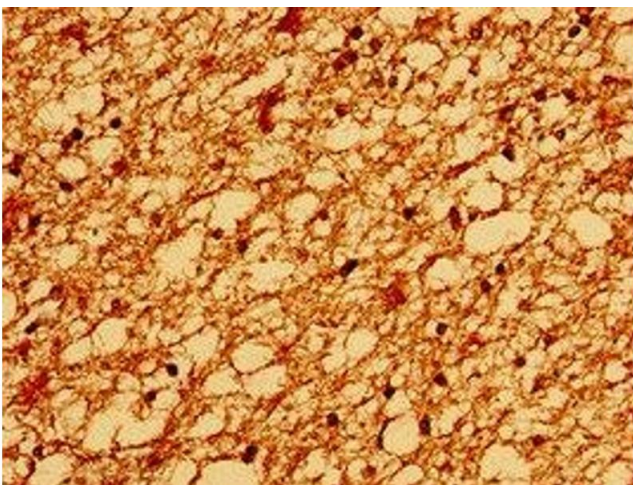
Preservative: ProClin

Precaution of Use: This product contains ProClin: a POISONOUS AND HAZARDOUS SUBSTANCE which should be handled by trained staff only.

Storage: -20 °C,-80 °C

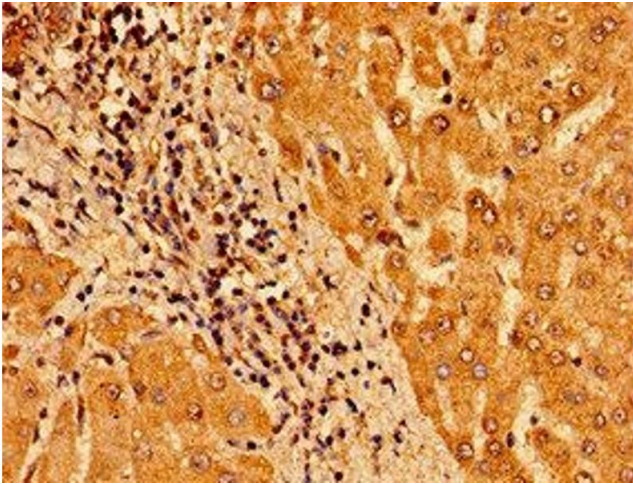
Storage Comment: Upon receipt, store at -20°C or -80°C. Avoid repeated freeze.

Images



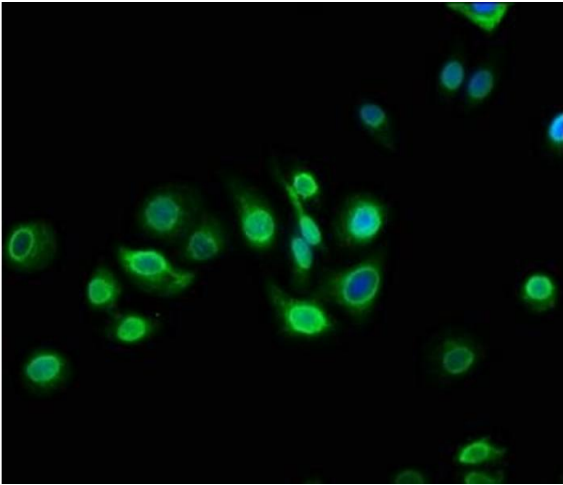
Immunohistochemistry

Image 1. Immunohistochemistry of paraffin-embedded human brain tissue using ABIN7172938 at dilution of 1:100



Immunohistochemistry

Image 2. Immunohistochemistry of paraffin-embedded human liver tissue using ABIN7172938 at dilution of 1:100



Immunofluorescence

Image 3. Immunofluorescence staining of HepG2 cells with ABIN7172938 at 1:133, counter-stained with DAPI. The cells were fixed in 4% formaldehyde, permeabilized using 0.2% Triton X-100 and blocked in 10% normal Goat Serum. The cells were then incubated with the antibody overnight at 4°C. The secondary antibody was Alexa Fluor 488-conjugated AffiniPure Goat Anti-Rabbit IgG(H+L).