



[Go to Product page](#)

Datasheet for ABIN7172947
anti-TM9SF1 antibody (AA 28-230)

4 Images

Overview

Quantity:	100 µL
Target:	TM9SF1
Binding Specificity:	AA 28-230
Reactivity:	Human
Host:	Rabbit
Clonality:	Polyclonal
Conjugate:	This TM9SF1 antibody is un-conjugated
Application:	Western Blotting (WB), Immunohistochemistry (IHC), ELISA, Immunofluorescence (IF)

Product Details

Immunogen:	Recombinant Human Transmembrane 9 superfamily member 1 protein (28-230AA)
Isotype:	IgG
Cross-Reactivity:	Human, Mouse
Purification:	Antigen Affinity Purified

Target Details

Target:	TM9SF1
Alternative Name:	TM9SF1 (TM9SF1 Products)
Background:	Background: Plays an essential role in autophagy. Aliases: HMP 70 antibody, hMP70 antibody, MP 70 antibody, MP70 antibody, MP70 protein

Target Details

family member antibody, Multispanning membrane protein (70kD) antibody, TM9S1_HUMAN antibody, Tm9sf1 antibody, Transmembrane 9 superfamily member 1 antibody, Transmembrane protein 9 superfamily member 1 antibody

UniProt: [O15321](#)

Application Details

Application Notes: Recommended dilution: WB:1:1000-1:5000, IHC:1:20-1:200, IF:1:50-1:200,

Restrictions: For Research Use only

Handling

Format: Liquid

Buffer: PBS with 0.02 % sodium azide, 50 % glycerol, pH 7.3.

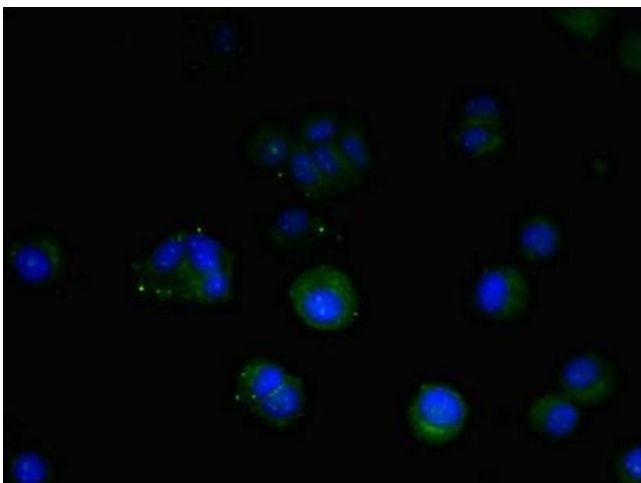
Preservative: Sodium azide

Precaution of Use: This product contains Sodium azide: a POISONOUS AND HAZARDOUS SUBSTANCE which should be handled by trained staff only.

Storage: -20 °C,-80 °C

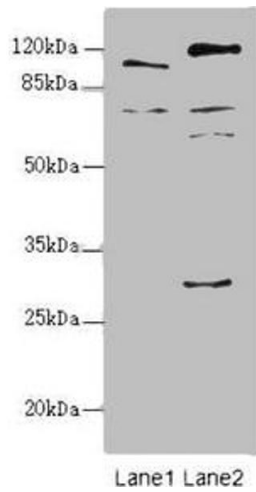
Storage Comment: Upon receipt, store at -20°C or -80°C. Avoid repeated freeze.

Images



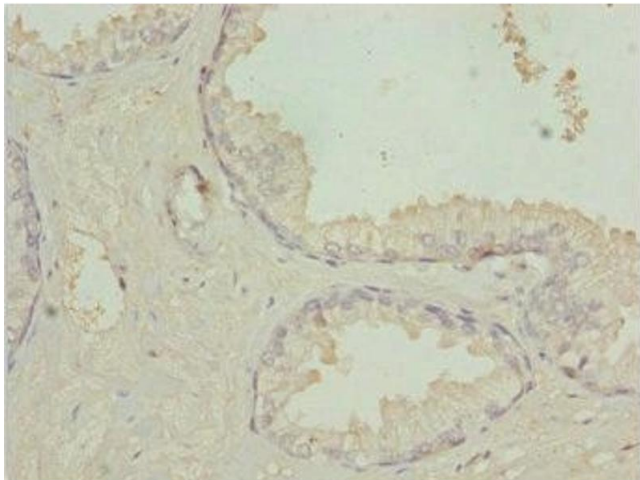
Immunofluorescence

Image 1. Immunofluorescent analysis of MCF-7 cells using ABIN7172947 at dilution of 1:100 and Alexa Fluor 488-conjugated AffiniPure Goat Anti-Rabbit IgG(H+L)



Western Blotting

Image 2. Western blot All lanes: TM9SF1 antibody at 2.18 μ g/mL Lane 1: Mouse liver tissue Lane 2: Mouse kidney tissue Secondary Goat polyclonal to rabbit IgG at 1/10000 dilution Predicted band size: 69, 56 kDa Observed band size: 69, 110, 59, 28 kDa



Immunohistochemistry

Image 3. Immunohistochemistry of paraffin-embedded human prostate cancer using ABIN7172947 at dilution of 1:100

Please check the [product details page](#) for more images. Overall 4 images are available for ABIN7172947.