



[Go to Product page](#)

Datasheet for ABIN7172969  
**anti-Tmc2 antibody (AA 6-206)**

1 Image

### Overview

Quantity:	100 µg
Target:	Tmc2
Binding Specificity:	AA 6-206
Reactivity:	Human
Host:	Rabbit
Clonality:	Polyclonal
Conjugate:	This Tmc2 antibody is un-conjugated
Application:	ELISA, Immunofluorescence (IF)

### Product Details

Immunogen:	Recombinant Human Transmembrane channel-like protein 2 protein (6-206AA)
Isotype:	IgG
Cross-Reactivity:	Human
Purification:	>95%, Protein G purified

### Target Details

Target:	Tmc2
Alternative Name:	TMC2 ( <a href="#">Tmc2 Products</a> )
Background:	Background: Probable ion channel required for the normal function of cochlear hair cells. Aliases: TMC2 antibody, C20orf145 antibody, UNQ907/PRO1928 antibody, Transmembrane

## Target Details

channel-like protein 2 antibody, Transmembrane cochlear-expressed protein 2 antibody

UniProt: [Q8TDI7](#)

## Application Details

Application Notes: Recommended dilution: IF:1:50-1:200,

Restrictions: For Research Use only

## Handling

Format: Liquid

Buffer: Preservative: 0.03 % Proclin 300  
Constituents: 50 % Glycerol, 0.01M PBS, PH 7.4

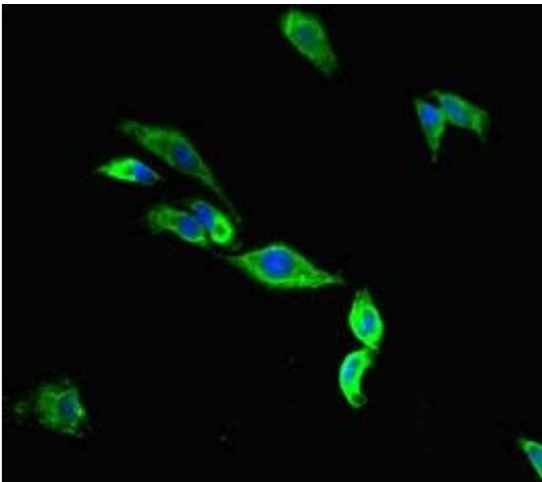
Preservative: ProClin

Precaution of Use: This product contains ProClin: a POISONOUS AND HAZARDOUS SUBSTANCE which should be handled by trained staff only.

Storage: -20 °C,-80 °C

Storage Comment: Upon receipt, store at -20°C or -80°C. Avoid repeated freeze.

## Images



### Immunofluorescence

**Image 1.** Immunofluorescent analysis of HeLa cells using ABIN7172969 at dilution of 1:100 and Alexa Fluor 488-conjugated AffiniPure Goat Anti-Rabbit IgG(H+L)