

Datasheet for ABIN7172974
anti-TMED1 antibody (AA 35-190)

3 Images

[Go to Product page](#)

Overview

Quantity:	100 µL
Target:	TMED1
Binding Specificity:	AA 35-190
Reactivity:	Human
Host:	Rabbit
Clonality:	Polyclonal
Application:	Western Blotting (WB), ELISA, Immunohistochemistry (IHC)

Product Details

Immunogen:	Recombinant Human Transmembrane emp24 domain-containing protein 10 protein (35-190AA)
Isotype:	IgG
Cross-Reactivity:	Human, Mouse
Purification:	Antigen Affinity Purified

Target Details

Target:	TMED1
Alternative Name:	TMED1 (TMED1 Products)
Background:	Background: Involved in vesicular protein trafficking. Mainly functions in the early secretory pathway. Thought to act as cargo receptor at the luminal side for incorporation of secretory cargo molecules into transport vesicles and to be involved in vesicle coat formation at the

Target Details

cytoplasmic side. In COPII vesicle-mediated anterograde transport involved in the transport of GPI-anchored proteins and proposed to act together with TMED2 as their cargo receptor, the function specifically implies SEC24C and SEC24D of the COPII vesicle coat and lipid raft-like microdomains of the ER. Recognizes GPI anchors structural remodeled in the ER by PGAP1 and MPPE1 (By similarity). In COPI vesicle-mediated retrograde transport involved in the biogenesis of COPI vesicles and vesicle coat recruitment. On Golgi membranes, acts as primary receptor for ARF1-GDP which is involved in COPI-vesicle formation. Increases coatomer-dependent GTPase-activating activity of ARFGAP2. Involved in trafficking of G protein-coupled receptors (GPCRs). Regulates F2LR1, OPRM1 and P2RY4 exocytic trafficking from the Golgi to the plasma membrane thus contributing to receptor resensitization. Involved in trafficking of amyloid beta A4 protein and soluble APP-beta release (independent of modulation of gamma-secretase activity). As part of the presenilin-dependent gamma-secretase complex regulates gamma-cleavages of the amyloid beta A4 protein to yield amyloid-beta 40 (Abeta40). Involved in organization of the Golgi apparatus.

Aliases: 1110014C03Rik antibody, 21 kDa transmembrane trafficking protein antibody, 21 kDa transmembrane-trafficking protein antibody, MGC102351 antibody, p23 antibody, p24 family protein delta 1 antibody, p24 family protein delta-1 antibody, p24(Delta) antibody, p24delta antibody, p24delta1 antibody, S311125 antibody, S311125 antibody, TMED 10 antibody, Tmed10 antibody, TMEDA_HUMAN antibody, Tmp 21 I antibody, Tmp 21 antibody, Tmp 21 I antibody, Tmp-21-I antibody, Transmembrane emp24 domain containing protein 10 antibody, Transmembrane emp24 domain-containing protein 10 antibody, Transmembrane emp24-like trafficking protein 10 (yeast) antibody, Transmembrane protein Tmp21 antibody, Transmembrane trafficking protein 21kD antibody

UniProt: [P49755](#)

Application Details

Application Notes: Recommended dilution: WB:1:1000-1:5000, IHC:1:20-1:200,

Restrictions: For Research Use only

Handling

Format: Liquid

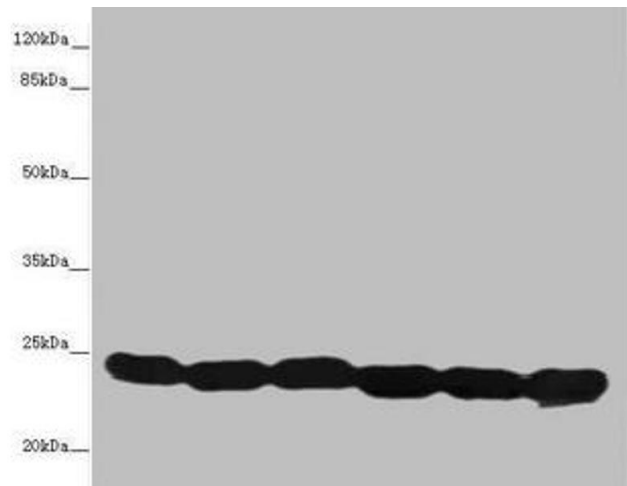
Buffer: PBS with 0.02 % sodium azide, 50 % glycerol, pH 7.3.

Preservative: Sodium azide

Handling

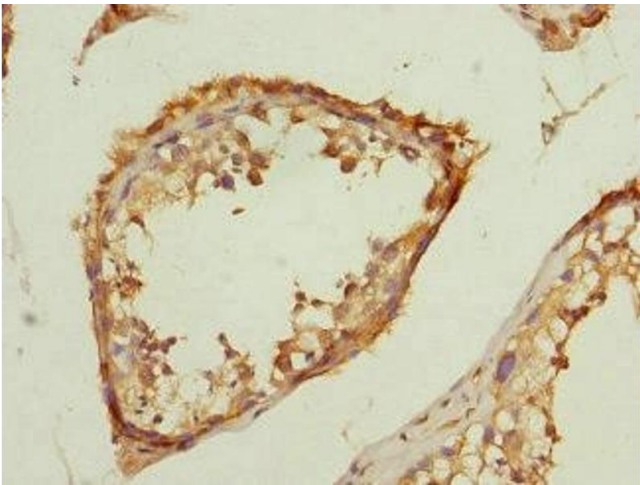
Precaution of Use:	This product contains Sodium azide: a POISONOUS AND HAZARDOUS SUBSTANCE which should be handled by trained staff only.
Storage:	-20 °C,-80 °C
Storage Comment:	Upon receipt, store at -20°C or -80°C. Avoid repeated freeze.

Images



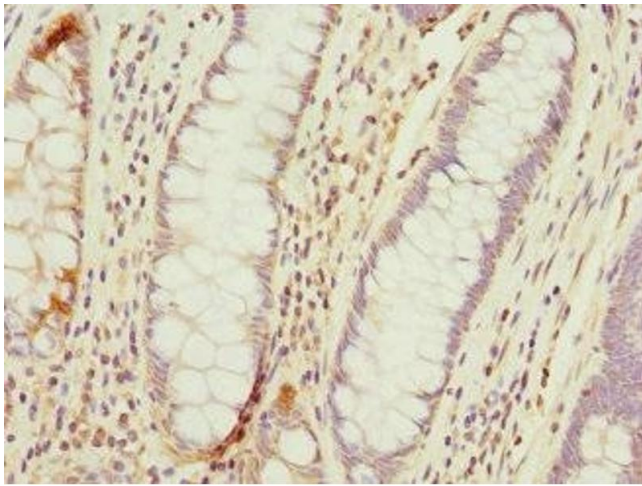
Western Blotting

Image 1. Western blot All lanes: TMED10 antibody at 4.88 µg/mL Lane 1: Hela whole cell lysate Lane 2: Mouse liver tissue Lane 3: Mouse lung tissue Lane 4: 293T whole cell lysate Lane 5: NIH/3T3 whole cell lysate Lane 6: U87 whole cell lysate Secondary Goat polyclonal to rabbit IgG at 1/10000 dilution Predicted band size: 25 kDa Observed band size: 25 kDa



Immunohistochemistry

Image 2. Immunohistochemistry of paraffin-embedded human testis tissue using ABIN7172974 at dilution of 1:100



Immunohistochemistry

Image 3. Immunohistochemistry of paraffin-embedded human colon cancer using ABIN7172974 at dilution of 1:100