

Datasheet for ABIN7172975
anti-TMED2 antibody (AA 26-111)[Go to Product page](#)

3 Images

Overview

Quantity:	100 µg
Target:	TMED2
Binding Specificity:	AA 26-111
Reactivity:	Human
Host:	Rabbit
Clonality:	Polyclonal
Conjugate:	This TMED2 antibody is un-conjugated
Application:	ELISA, Western Blotting (WB), Immunohistochemistry (IHC)

Product Details

Immunogen:	Recombinant Human Transmembrane emp24 domain-containing protein 2 protein (26-111AA)
Isotype:	IgG
Cross-Reactivity:	Human, Mouse
Purification:	>95%, Protein G purified

Target Details

Target:	TMED2
Alternative Name:	TMED2 (TMED2 Products)
Background:	Background: Involved in vesicular protein trafficking. Mainly functions in the early secretory pathway but also in post-Golgi membranes. Thought to act as cargo receptor at the luminal

Target Details

side for incorporation of secretory cargo molecules into transport vesicles and to be involved in vesicle coat formation at the cytoplasmic side. In COPII vesicle-mediated anterograde transport involved in the transport of GPI-anchored proteins and proposed to act together with TMED10 as their cargo receptor, the function specifically implies SEC24C and SEC24D of the COPII vesicle coat and lipid raft-like microdomains of the ER. Recognizes GPI anchors structural remodeled in the ER by PGAP1 and MPPE1. In COPI vesicle-mediated retrograde transport inhibits the GTPase-activating activity of ARFGAP1 towards ARF1 thus preventing immature uncoating and allowing cargo selection to take place. Involved in trafficking of G protein-coupled receptors (GPCRs). Regulates F2RL1, OPRM1 and P2RY4 exocytic trafficking from the Golgi to the plasma membrane thus contributing to receptor resensitization. Facilitates CASR maturation and stabilization in the early secretory pathway and increases CASR plasma membrane targeting. Proposed to be involved in organization of intracellular membranes such as the maintenance of the Golgi apparatus. May also play a role in the biosynthesis of secreted cargo such as eventual processing.

Aliases: coated vesicle membrane protein antibody, Membrane protein p24A antibody, p24 antibody, p24 family protein beta-1 antibody, P24A antibody, p24beta1 antibody, RNP24 antibody, Sid 394 antibody, Sid394 antibody, TMED2 antibody, TMED2_HUMAN antibody, transmembrane emp24 domain trafficking protein 2 antibody, Transmembrane emp24 domain-containing protein 2 antibody

UniProt: [Q15363](#)

Application Details

Application Notes: Recommended dilution: WB:1:500-1:2000, IHC:1:20-1:200,

Restrictions: For Research Use only

Handling

Format: Liquid

Buffer: Preservative: 0.03 % Proclin 300
Constituents: 50 % Glycerol, 0.01M PBS, PH 7.4

Preservative: ProClin

Precaution of Use: This product contains ProClin: a POISONOUS AND HAZARDOUS SUBSTANCE which should be handled by trained staff only.

Storage: -20 °C,-80 °C

Handling

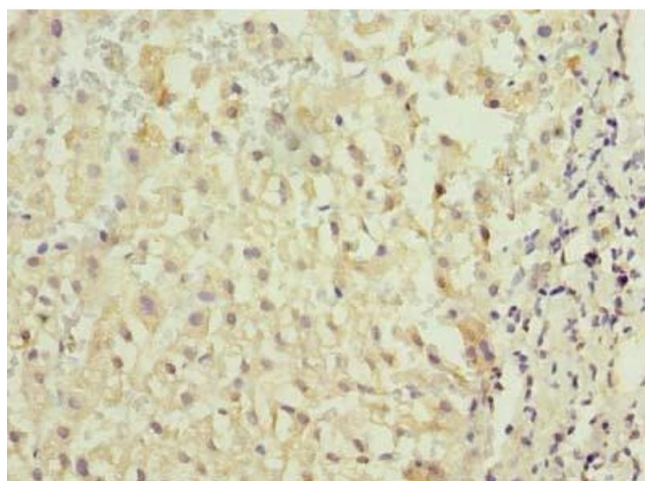
Storage Comment: Upon receipt, store at -20°C or -80°C. Avoid repeated freeze.

Images



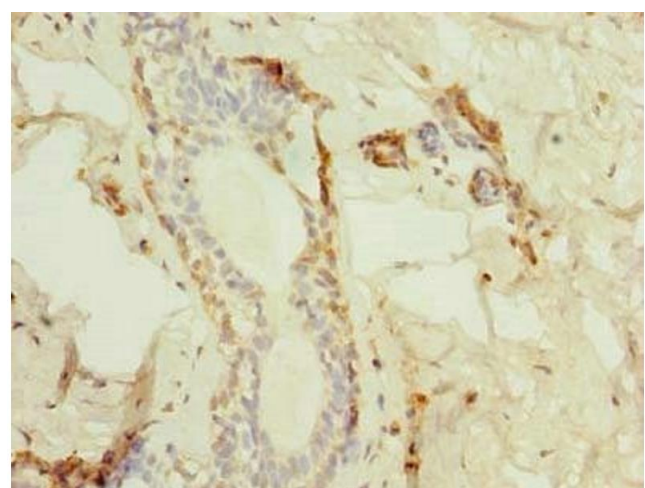
Western Blotting

Image 1. Western blot All lanes: TMED2 antibody at 6 μ g/mL Lane 1: HCT116 whole cell lysate Lane 2: Mouse ovarian tissue Secondary Goat polyclonal to rabbit IgG at 1/10000 dilution Predicted band size: 23 kDa Observed band size: 23 kDa



Immunohistochemistry

Image 2. Immunohistochemistry of paraffin-embedded human liver cancer using ABIN7172975 at dilution of 1:100



Immunohistochemistry

Image 3. Immunohistochemistry of paraffin-embedded human breast cancer using ABIN7172975 at dilution of 1:100