



[Go to Product page](#)

Datasheet for ABIN7172979

anti-TMED3 antibody (AA 24-180)

3 Images

Overview

Quantity:	100 µg
Target:	TMED3
Binding Specificity:	AA 24-180
Reactivity:	Human
Host:	Rabbit
Clonality:	Polyclonal
Conjugate:	This TMED3 antibody is un-conjugated
Application:	ELISA, Western Blotting (WB), Immunohistochemistry (IHC)

Product Details

Immunogen:	Recombinant Human Transmembrane emp24 domain-containing protein 3 protein (24-180AA)
Isotype:	IgG
Cross-Reactivity:	Human
Purification:	>95%, Protein G purified

Target Details

Target:	TMED3
Alternative Name:	TMED3 (TMED3 Products)
Background:	Background: Potential role in vesicular protein trafficking, mainly in the early secretory pathway. Contributes to the coupled localization of TMED2 and TMED10 in the cis-Golgi network.

Target Details

Aliases: C15orf22 antibody, Integral type I protein antibody, Membrane protein p24B antibody, p24 family protein gamma 4 antibody, p24 family protein gamma-4 antibody, P24B antibody, p24g4 antibody, p24gamma4 antibody, p26 antibody, Testis tissue sperm binding protein Li 48e antibody, Tmed3 antibody, TMED3_HUMAN antibody, Transmembrane emp24 domain containing protein 3 antibody, Transmembrane emp24 domain-containing protein 3 antibody, Transmembrane p24 trafficking protein 3 antibody, UNQ5357/PRO1078 antibody

UniProt: [Q9Y3Q3](#)

Application Details

Application Notes: Recommended dilution: WB:1:500-1:2000, IHC:1:20-1:200,

Restrictions: For Research Use only

Handling

Format: Liquid

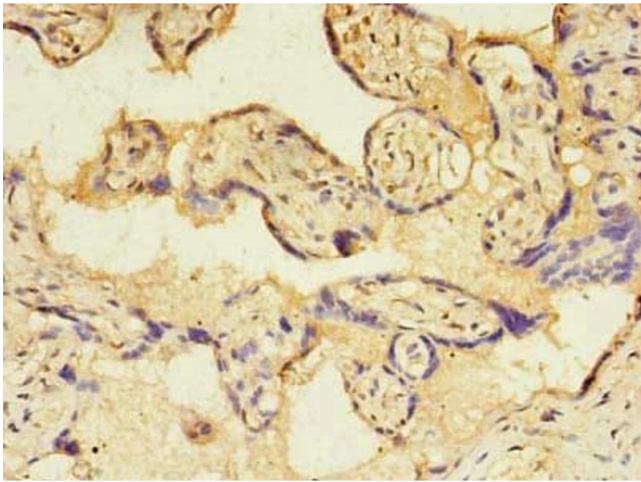
Buffer: Preservative: 0.03 % Proclin 300
Constituents: 50 % Glycerol, 0.01M PBS, PH 7.4

Preservative: ProClin

Precaution of Use: This product contains ProClin: a POISONOUS AND HAZARDOUS SUBSTANCE which should be handled by trained staff only.

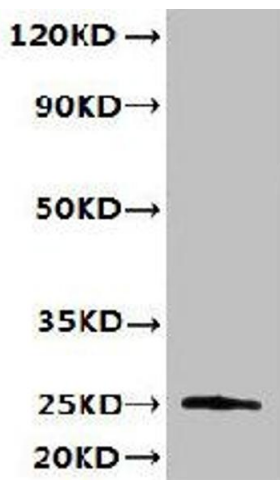
Storage: -20 °C,-80 °C

Storage Comment: Upon receipt, store at -20°C or -80°C. Avoid repeated freeze.



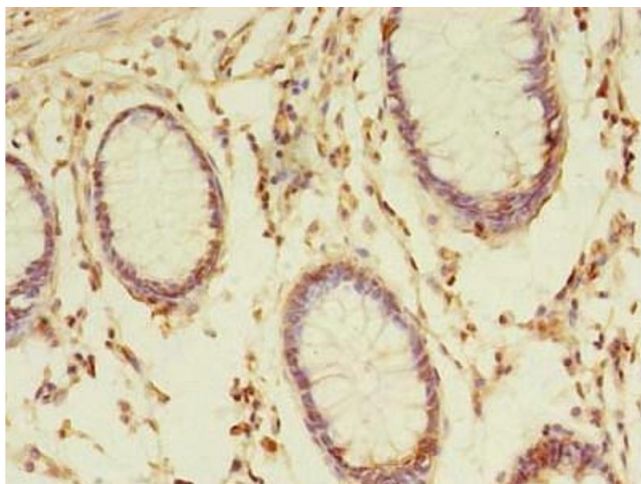
Immunohistochemistry

Image 1. Immunohistochemistry of paraffin-embedded human placenta tissue using ABIN7172979 at dilution of 1:100



Western Blotting

Image 2. Western blot All lanes: TMED3 antibody at 6 μ g/mL + MCF-7 whole cell lysate Secondary Goat polyclonal to rabbit IgG at 1/10000 dilution Predicted band size: 25, 20 kDa Observed band size: 25 kDa



Immunohistochemistry

Image 3. Immunohistochemistry of paraffin-embedded human colon cancer using ABIN7172979 at dilution of 1:100