



Datasheet for ABIN7173139  
**anti-FAM156A antibody (AA 251-519)**



[Go to Product page](#)

3 Images

Overview

Quantity:	100 µg
Target:	FAM156A
Binding Specificity:	AA 251-519
Reactivity:	Human
Host:	Rabbit
Clonality:	Polyclonal
Conjugate:	This FAM156A antibody is un-conjugated
Application:	ELISA, Immunohistochemistry (IHC), Immunofluorescence (IF)

Product Details

Immunogen:	Recombinant Human Transmembrane protein 209 protein (251-519AA)
Isotype:	IgG
Cross-Reactivity:	Human
Purification:	>95%, Protein G purified

Target Details

Target:	FAM156A
Alternative Name:	TMEM29 ( <a href="#">FAM156A Products</a> )
Background:	TMEM209 antibody, Transmembrane protein 209 antibody
UniProt:	<a href="#">Q96SK2</a>

## Application Details

---

Application Notes: Recommended dilution: IHC:1:20-1:200, IF:1:50-1:200,

---

Restrictions: For Research Use only

---

## Handling

---

Format: Liquid

---

Buffer: Preservative: 0.03 % Proclin 300  
Constituents: 50 % Glycerol, 0.01M PBS, PH 7.4

---

Preservative: ProClin

---

Precaution of Use: This product contains ProClin: a POISONOUS AND HAZARDOUS SUBSTANCE which should be handled by trained staff only.

---

Storage: -20 °C,-80 °C

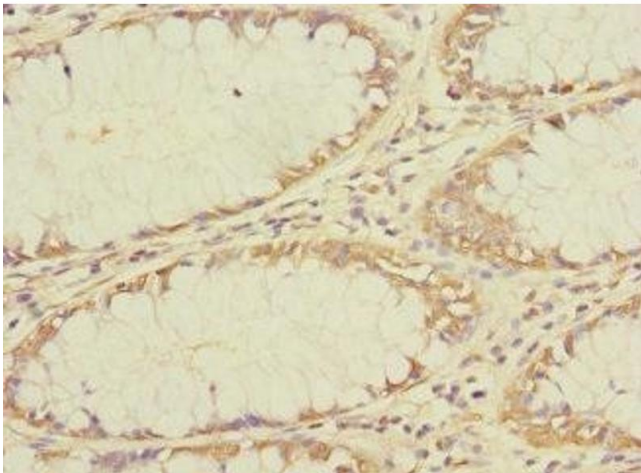
---

Storage Comment: Upon receipt, store at -20°C or -80°C. Avoid repeated freeze.

---

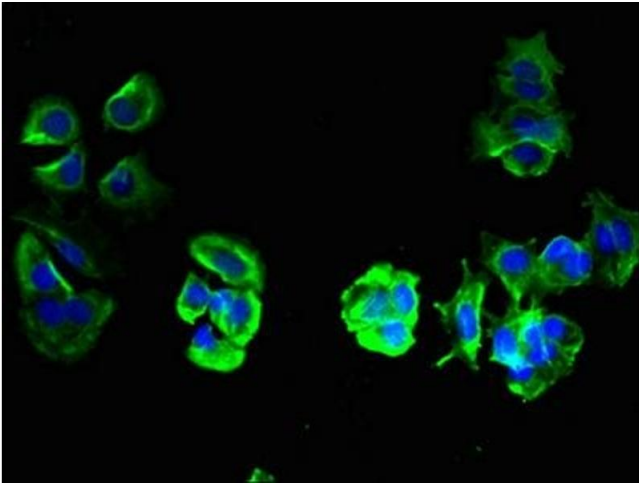
## Images

---



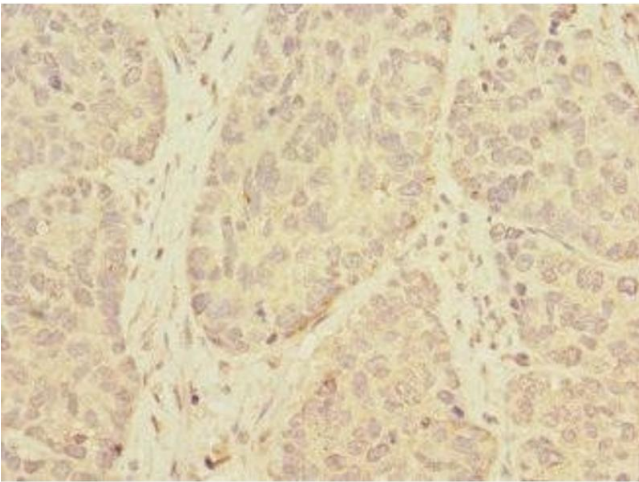
### Immunohistochemistry

**Image 1.** Immunohistochemistry of paraffin-embedded human colon cancer using ABIN7173139 at dilution of 1:100



### Immunofluorescence

**Image 2.** Immunofluorescent analysis of MCF-7 cells using ABIN7173139 at dilution of 1:100 and Alexa Fluor 488-conjugated AffiniPure Goat Anti-Rabbit IgG(H+L)



### Immunohistochemistry

**Image 3.** Immunohistochemistry of paraffin-embedded human ovarian cancer using ABIN7173139 at dilution of 1:100