



[Go to Product page](#)

Datasheet for ABIN7173143  
**anti-TMEM213 antibody (AA 30-60)**

2 Images

Overview

Quantity:	100 µg
Target:	TMEM213
Binding Specificity:	AA 30-60
Reactivity:	Human
Host:	Rabbit
Clonality:	Polyclonal
Conjugate:	This TMEM213 antibody is un-conjugated
Application:	ELISA, Immunohistochemistry (IHC), Immunofluorescence (IF)

Product Details

Immunogen:	Recombinant Human Transmembrane protein 213 protein (30-60AA)
Isotype:	IgG
Cross-Reactivity:	Human
Purification:	>95%, Protein G purified

Target Details

Target:	TMEM213
Alternative Name:	TMEM213 ( <a href="#">TMEM213 Products</a> )
Background:	TMEM213 antibody, Transmembrane protein 213 antibody
UniProt:	<a href="#">A2RRL7</a>

## Application Details

---

Application Notes: Recommended dilution: IHC:1:20-1:200, IF:1:50-1:200,

Restrictions: For Research Use only

## Handling

---

Format: Liquid

Buffer: Preservative: 0.03 % Proclin 300  
Constituents: 50 % Glycerol, 0.01M PBS, PH 7.4

Preservative: ProClin

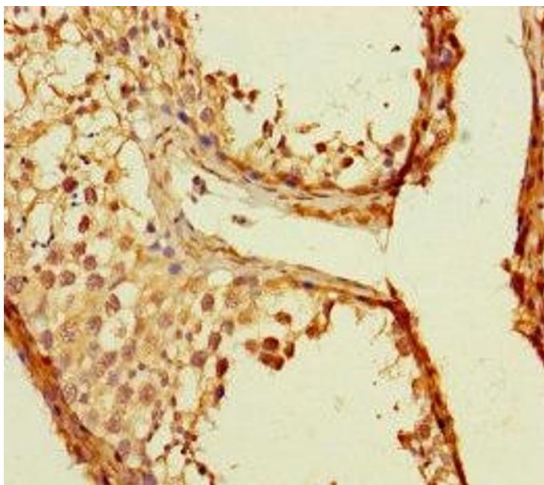
Precaution of Use: This product contains ProClin: a POISONOUS AND HAZARDOUS SUBSTANCE which should be handled by trained staff only.

Storage: -20 °C,-80 °C

Storage Comment: Upon receipt, store at -20°C or -80°C. Avoid repeated freeze.

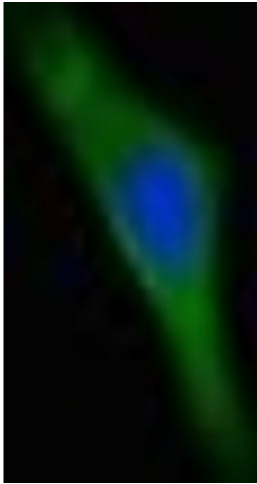
## Images

---



### Immunohistochemistry

**Image 1.** Immunohistochemistry of paraffin-embedded human testis tissue using ABIN7173143 at dilution of 1:100



### Immunofluorescence

**Image 2.** Immunofluorescent analysis of HeLa cells using ABIN7173143 at dilution of 1:100 and Alexa Fluor 488-conjugated AffiniPure Goat Anti-Rabbit IgG(H+L)