

Datasheet for ABIN7173159
anti-TMEM231 antibody (AA 161-261)[Go to Product page](#)

1 Image

Overview

Quantity:	100 µg
Target:	TMEM231
Binding Specificity:	AA 161-261
Reactivity:	Human
Host:	Rabbit
Clonality:	Polyclonal
Conjugate:	This TMEM231 antibody is un-conjugated
Application:	ELISA, Immunofluorescence (IF)

Product Details

Immunogen:	Recombinant Human Transmembrane protein 231 protein (161-261AA)
Isotype:	IgG
Cross-Reactivity:	Human
Purification:	>95%, Protein G purified

Target Details

Target:	TMEM231
Alternative Name:	TMEM231 (TMEM231 Products)
Background:	Background: Transmembrane component of the tectonic-like complex, a complex localized at the transition zone of primary cilia and acting as a barrier that prevents diffusion of

Target Details

transmembrane proteins between the cilia and plasma membranes. Required for ciliogenesis and sonic hedgehog/SHH signaling (By similarity).

Aliases: ALYE870 antibody, CDNA: FLJ22167 fis, clone HRC00584 antibody, hCG 2043031 antibody, HCG2043031, isoform CRA a antibody, hypothetical protein LOC79583 antibody, JBTS20 antibody, PRO1886 antibody, Putative uncharacterized protein FLJ22167 antibody, Q9H6L2 antibody, TM231_HUMAN antibody, Tmem231 antibody, Transmembrane protein 231 antibody, UNQ870/PRO1886 antibody, UPF0513 membrane protein antibody

UniProt: [Q9H6L2](#)

Application Details

Application Notes: Recommended dilution: IF:1:50-1:200,

Restrictions: For Research Use only

Handling

Format: Liquid

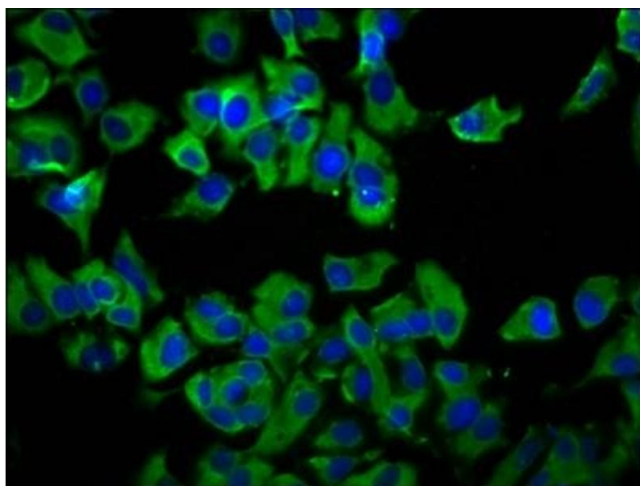
Buffer: Preservative: 0.03 % Proclin 300
Constituents: 50 % Glycerol, 0.01M PBS, pH 7.4

Preservative: ProClin

Precaution of Use: This product contains ProClin: a POISONOUS AND HAZARDOUS SUBSTANCE which should be handled by trained staff only.

Storage: -20 °C,-80 °C

Storage Comment: Upon receipt, store at -20°C or -80°C. Avoid repeated freeze.



Immunofluorescence

Image 1. Immunofluorescence staining of MCF-7 cells with ABIN7173159 at 1:66, counter-stained with DAPI. The cells were fixed in 4% formaldehyde, permeabilized using 0.2% Triton X-100 and blocked in 10% normal Goat Serum. The cells were then incubated with the antibody overnight at 4°C. The secondary antibody was Alexa Fluor 488-conjugated AffiniPure Goat Anti-Rabbit IgG(H+L).