



[Go to Product page](#)

Datasheet for ABIN7173163
anti-C2CD2L antibody (AA 42-87)

1 Image

Overview

Quantity:	100 µg
Target:	C2CD2L
Binding Specificity:	AA 42-87
Reactivity:	Human
Host:	Rabbit
Clonality:	Polyclonal
Conjugate:	This C2CD2L antibody is un-conjugated
Application:	ELISA, Immunofluorescence (IF)

Product Details

Immunogen:	Recombinant Human Transmembrane protein 240 protein (42-87AA)
Isotype:	IgG
Cross-Reactivity:	Human
Purification:	>95%, Protein G purified

Target Details

Target:	C2CD2L
Alternative Name:	TMEM24 (C2CD2L Products)
Background:	Background: synaptic membrane Aliases: TM240_HUMAN antibody, TMEM240 antibody, Transmembrane protein 240 antibody

Target Details

UniProt: [Q5SV17](#)

Application Details

Application Notes: Recommended dilution: IF:1:50-1:200,

Restrictions: For Research Use only

Handling

Format: Liquid

Buffer: Preservative: 0.03 % Proclin 300
Constituents: 50 % Glycerol, 0.01M PBS, PH 7.4

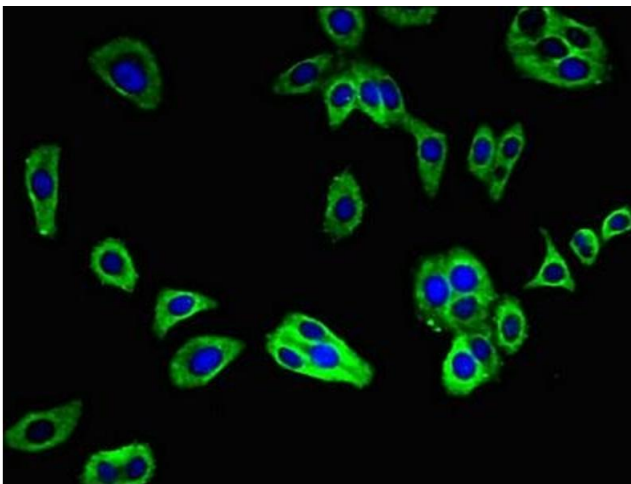
Preservative: ProClin

Precaution of Use: This product contains ProClin: a POISONOUS AND HAZARDOUS SUBSTANCE which should be handled by trained staff only.

Storage: -20 °C,-80 °C

Storage Comment: Upon receipt, store at -20°C or -80°C. Avoid repeated freeze.

Images



Immunofluorescence

Image 1. Immunofluorescent analysis of HepG2 cells using ABIN7173163 at dilution of 1:100 and Alexa Fluor 488-conjugated AffiniPure Goat Anti-Rabbit IgG(H+L)