



[Go to Product page](#)

Datasheet for ABIN7173183

anti-TMEM256 antibody (AA 30-63)

1 Image

Overview

Quantity:	100 µg
Target:	TMEM256
Binding Specificity:	AA 30-63
Reactivity:	Human
Host:	Rabbit
Clonality:	Polyclonal
Conjugate:	This TMEM256 antibody is un-conjugated
Application:	ELISA, Immunofluorescence (IF)

Product Details

Immunogen:	Recombinant Human Transmembrane protein 256 protein (30-63AA)
Isotype:	IgG
Cross-Reactivity:	Human
Purification:	>95%, Protein G purified

Target Details

Target:	TMEM256
Alternative Name:	TMEM256 (TMEM256 Products)
Background:	Background: extracellular exosome Aliases: TMEM256 antibody, C17orf61 antibody, Transmembrane protein 256 antibody

Target Details

UniProt: [Q8N2U0](#)

Application Details

Application Notes: Recommended dilution: IF:1:50-1:200,

Restrictions: For Research Use only

Handling

Format: Liquid

Buffer: Preservative: 0.03 % Proclin 300
Constituents: 50 % Glycerol, 0.01M PBS, PH 7.4

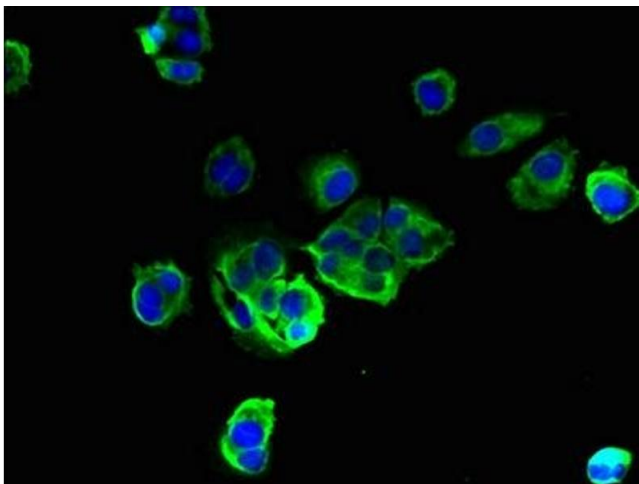
Preservative: ProClin

Precaution of Use: This product contains ProClin: a POISONOUS AND HAZARDOUS SUBSTANCE which should be handled by trained staff only.

Storage: -20 °C,-80 °C

Storage Comment: Upon receipt, store at -20°C or -80°C. Avoid repeated freeze.

Images



Immunofluorescence

Image 1. Immunofluorescent analysis of MCF-7 cells using ABIN7173183 at dilution of 1:100 and Alexa Fluor 488-conjugated AffiniPure Goat Anti-Rabbit IgG(H+L)