



[Go to Product page](#)

Datasheet for ABIN7173373
anti-TCHP antibody (AA 1-498)

3 Images

Overview

Quantity:	100 µg
Target:	TCHP
Binding Specificity:	AA 1-498
Reactivity:	Human
Host:	Rabbit
Clonality:	Polyclonal
Conjugate:	This TCHP antibody is un-conjugated
Application:	ELISA, Immunohistochemistry (IHC), Immunofluorescence (IF)

Product Details

Immunogen:	Recombinant Human Trichoplein keratin filament-binding protein (1-498AA)
Isotype:	IgG
Cross-Reactivity:	Human
Purification:	>95%, Protein G purified

Target Details

Target:	TCHP
Alternative Name:	TCHP (TCHP Products)
Background:	Background: Tumor suppressor which has the ability to inhibit cell growth and be pro-apoptotic during cell stress. Inhibits cell growth in bladder and prostate cancer cells by a down-regulation

Target Details

of HSPB1 by inhibiting its phosphorylation. May act as a 'capping' or 'branching' protein for keratin filaments in the cell periphery. May regulate K8/K18 filament and desmosome organization mainly at the apical or peripheral regions of simple epithelial cells (PubMed:15731013, PubMed:18931701). Is a negative regulator of ciliogenesis (PubMed:25270598).

Aliases: TCHP antibody, Trichoplein keratin filament-binding protein antibody, Protein TCHP antibody, Mitochondrial protein with oncostatic activity antibody, Mitostatin antibody, Tumor suppressor protein antibody

UniProt: [Q9BT92](#)

Application Details

Application Notes: Recommended dilution: IHC:1:20-1:200, IF:1:50-1:500,

Restrictions: For Research Use only

Handling

Format: Liquid

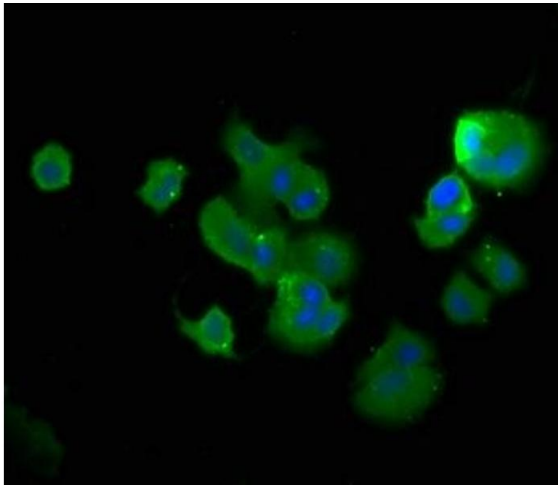
Buffer: Preservative: 0.03 % Proclin 300
Constituents: 50 % Glycerol, 0.01M PBS, PH 7.4

Preservative: ProClin

Precaution of Use: This product contains ProClin: a POISONOUS AND HAZARDOUS SUBSTANCE which should be handled by trained staff only.

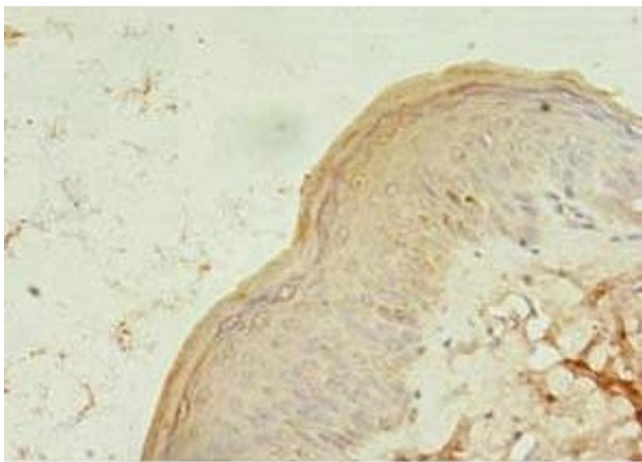
Storage: -20 °C,-80 °C

Storage Comment: Upon receipt, store at -20°C or -80°C. Avoid repeated freeze.



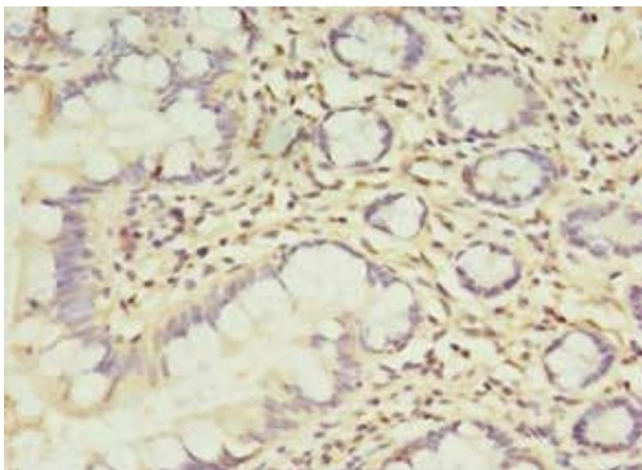
Immunofluorescence

Image 1. Immunofluorescence staining of MCF-7 cells with ABIN7173373 at 1:400, counter-stained with DAPI. The cells were fixed in 4 % formaldehyde, permeabilized using 0.2 % Triton X-100 and blocked in 10 % normal Goat Serum. The cells were then incubated with the antibody overnight at 4 °C. The secondary antibody was Alexa Fluor 488-conjugated AffiniPure Goat Anti-Rabbit IgG(H+L).



Immunohistochemistry

Image 2. Immunohistochemistry of paraffin-embedded human skin tissue using ABIN7173373 at dilution of 1:100



Immunohistochemistry

Image 3. Immunohistochemistry of paraffin-embedded human small intestine tissue using ABIN7173373 at dilution of 1:100