

Datasheet for ABIN7173395
anti-TMLHE antibody (AA 16-376)



[Go to Product page](#)

3 Images

Overview

Quantity:	100 µg
Target:	TMLHE
Binding Specificity:	AA 16-376
Reactivity:	Human
Host:	Rabbit
Clonality:	Polyclonal
Conjugate:	This TMLHE antibody is un-conjugated
Application:	Western Blotting (WB), ELISA, Immunohistochemistry (IHC)

Product Details

Immunogen:	Recombinant Human Trimethyllysine dioxygenase, mitochondrial protein (16-376AA)
Isotype:	IgG
Cross-Reactivity:	Human
Purification:	>95%, Protein G purified

Target Details

Target:	TMLHE
Alternative Name:	TMLHE (TMLHE Products)
Background:	Background: Converts trimethyllysine (TML) into hydroxytrimethyllysine (HTML). Aliases: AUTSX6 antibody, BBOX2 antibody, Butyrobetaine (gamma) 2 oxoglutarate

Target Details

dioxygenase (gamma butyrobetaine hydroxylase) 2 antibody, Epsilon-trimethyllysine 2-oxoglutarate dioxygenase antibody, Epsilon-trimethyllysine hydroxylase antibody, FLJ10727 antibody, TML dioxygenase antibody, TML hydroxylase antibody, TML-alpha-ketoglutarate dioxygenase antibody, TMLD antibody, TMLH antibody, TMLH_HUMAN antibody, TMLHE antibody, TMLHED antibody, Trimethyllysine dioxygenase, mitochondrial antibody, Trimethyllysine hydroxylase epsilon antibody, XAP130 antibody

UniProt: [Q9NVH6](#)

Application Details

Application Notes: Recommended dilution: WB:1:500-1:5000, IHC:1:20-1:200,

Restrictions: For Research Use only

Handling

Format: Liquid

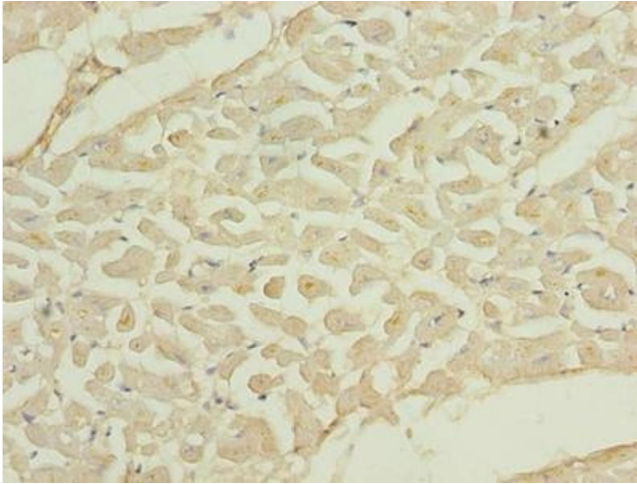
Buffer: Preservative: 0.03 % Proclin 300
Constituents: 50 % Glycerol, 0.01M PBS, PH 7.4

Preservative: ProClin

Precaution of Use: This product contains ProClin: a POISONOUS AND HAZARDOUS SUBSTANCE which should be handled by trained staff only.

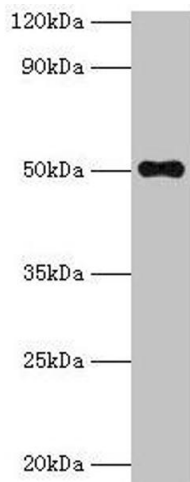
Storage: -20 °C,-80 °C

Storage Comment: Upon receipt, store at -20°C or -80°C. Avoid repeated freeze.



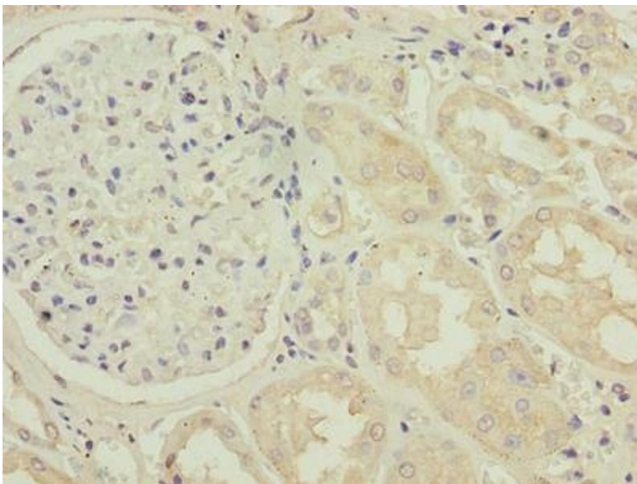
Immunohistochemistry

Image 1. Immunohistochemistry of paraffin-embedded human heart tissue using ABIN7173395 at dilution of 1:100



Western Blotting

Image 2. Western blot All lanes: TMLHE antibody at 2 μ g/mL + MCF-7 whole cell lysate Secondary Goat polyclonal to rabbit IgG at 1/10000 dilution Predicted band size: 50, 47, 39, 45, 43, 42, 51 kDa Observed band size: 50 kDa



Immunohistochemistry

Image 3. Immunohistochemistry of paraffin-embedded human kidney tissue using ABIN7173395 at dilution of 1:100