

Datasheet for ABIN7173483
anti-TPP1 antibody (AA 371-480)[Go to Product page](#)

1 Image

Overview

Quantity:	100 µg
Target:	TPP1
Binding Specificity:	AA 371-480
Reactivity:	Human
Host:	Rabbit
Clonality:	Polyclonal
Conjugate:	This TPP1 antibody is un-conjugated
Application:	ELISA, Immunohistochemistry (IHC)

Product Details

Immunogen:	Recombinant Human Tripeptidyl-peptidase 1 protein (371-480AA)
Isotype:	IgG
Cross-Reactivity:	Human
Purification:	>95%, Protein G purified

Target Details

Target:	TPP1
Alternative Name:	TPP1 (TPP1 Products)
Background:	Background: Lysosomal serine protease with tripeptidyl-peptidase I activity. May act as a non-specific lysosomal peptidase which generates tripeptides from the breakdown products

Target Details

produced by lysosomal proteinases. Requires substrates with an unsubstituted N-terminus (By similarity).

Aliases: Cell growth inhibiting gene 1 protein antibody, Cell growth-inhibiting gene 1 protein antibody, Ceroid lipofuscinosis neuronal 2 antibody, Ceroid lipofuscinosis neuronal 2 late infantile (Jansky Bielschowsky disease) antibody, Ceroid lipofuscinosis neuronal 2 late infantile antibody, CLN 2 antibody, CLN2 antibody, GIG 1 antibody, GIG1 antibody, Growth inhibiting protein 1 antibody, LPIC antibody, Lysosomal pepstatin insensitive protease antibody, Lysosomal pepstatin-insensitive protease antibody, MGC21297 antibody, TPP 1 antibody, TPP I antibody, TPP-1 antibody, TPP-I antibody, Tpp1 antibody, TPP1_HUMAN antibody, TPPI antibody, Tripeptidyl aminopeptidase antibody, Tripeptidyl peptidase I antibody, Tripeptidyl-peptidase 1 antibody, Tripeptidyl-peptidase I antibody

UniProt: [O14773](#)

Pathways: [Cell Division Cycle](#), [ER-Nucleus Signaling](#)

Application Details

Application Notes: Recommended dilution: IHC:1:200-1:500,

Restrictions: For Research Use only

Handling

Format: Liquid

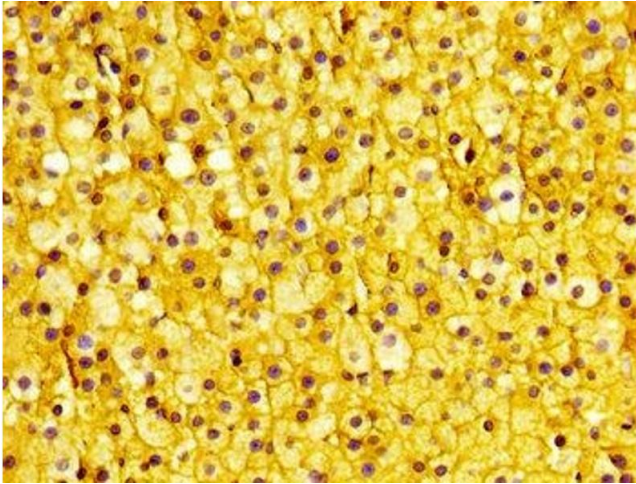
Buffer: Preservative: 0.03 % Proclin 300
Constituents: 50 % Glycerol, 0.01M PBS, pH 7.4

Preservative: ProClin

Precaution of Use: This product contains ProClin: a POISONOUS AND HAZARDOUS SUBSTANCE which should be handled by trained staff only.

Storage: -20 °C, -80 °C

Storage Comment: Upon receipt, store at -20°C or -80°C. Avoid repeated freeze.



Immunohistochemistry

Image 1. IHC image of ABIN7173483 diluted at 1:400 and staining in paraffin-embedded human adrenal gland tissue performed on a Leica Bond™ system. After dewaxing and hydration, antigen retrieval was mediated by high pressure in a citrate buffer (pH 6.0). Section was blocked with 10% normal goat serum 30min at RT. Then primary antibody (1% BSA) was incubated at 4°C overnight. The primary is detected by a biotinylated secondary antibody and visualized using an HRP conjugated SP system.