

Datasheet for ABIN7173536
anti-TSEN15 antibody (AA 1-171)[Go to Product page](#)

2 Images

Overview

Quantity:	100 µg
Target:	TSEN15
Binding Specificity:	AA 1-171
Reactivity:	Human
Host:	Rabbit
Clonality:	Polyclonal
Conjugate:	This TSEN15 antibody is un-conjugated
Application:	ELISA, Immunohistochemistry (IHC)

Product Details

Immunogen:	Recombinant Human tRNA-splicing endonuclease subunit Sen15 protein (1-171AA)
Isotype:	IgG
Cross-Reactivity:	Human
Purification:	>95%, Protein G purified

Target Details

Target:	TSEN15
Alternative Name:	TSEN15 (TSEN15 Products)
Background:	Background: Non-catalytic subunit of the tRNA-splicing endonuclease complex, a complex responsible for identification and cleavage of the splice sites in pre-tRNA. It cleaves pre-tRNA at

Target Details

the 5' and 3' splice sites to release the intron. The products are an intron and two tRNA half-molecules bearing 2',3' cyclic phosphate and 5'-OH termini (PubMed:15109492, PubMed:27392077). There are no conserved sequences at the splice sites, but the intron is invariably located at the same site in the gene, placing the splice sites an invariant distance from the constant structural features of the tRNA body. The tRNA splicing endonuclease is also involved in mRNA processing via its association with pre-mRNA 3'-end processing factors, establishing a link between pre-tRNA splicing and pre-mRNA 3'-end formation, suggesting that the endonuclease subunits function in multiple RNA-processing events (PubMed:15109492).

Aliases: TSEN15 antibody, C1orf19 antibody, SEN15 antibody, tRNA-splicing endonuclease subunit Sen15 antibody, SEN15 homolog antibody, HsSEN15 antibody, tRNA-intron endonuclease Sen15 antibody

UniProt: [Q8WW01](#)

Application Details

Application Notes: Recommended dilution: IHC:1:200-1:500,

Restrictions: For Research Use only

Handling

Format: Liquid

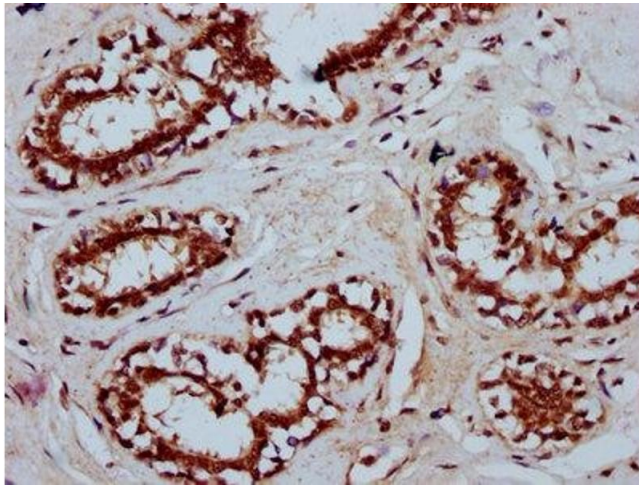
Buffer: Preservative: 0.03 % Proclin 300
Constituents: 50 % Glycerol, 0.01M PBS, pH 7.4

Preservative: ProClin

Precaution of Use: This product contains ProClin: a POISONOUS AND HAZARDOUS SUBSTANCE which should be handled by trained staff only.

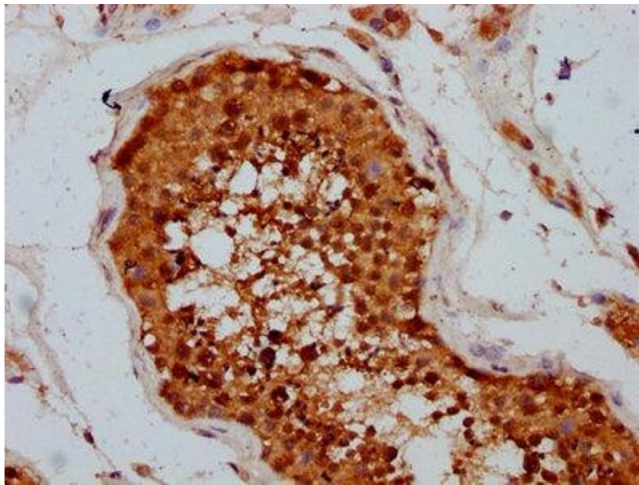
Storage: -20 °C,-80 °C

Storage Comment: Upon receipt, store at -20°C or -80°C. Avoid repeated freeze.



Immunohistochemistry

Image 1. IHC image of ABIN7173536 diluted at 1:400 and staining in paraffin-embedded human breast cancer performed on a Leica Bond™ system. After dewaxing and hydration, antigen retrieval was mediated by high pressure in a citrate buffer (pH 6.0). Section was blocked with 10% normal goat serum 30min at RT. Then primary antibody (1% BSA) was incubated at 4°C overnight. The primary is detected by a biotinylated secondary antibody and visualized using an HRP conjugated SP system.



Immunohistochemistry

Image 2. IHC image of ABIN7173536 diluted at 1:400 and staining in paraffin-embedded human testis tissue performed on a Leica Bond™ system. After dewaxing and hydration, antigen retrieval was mediated by high pressure in a citrate buffer (pH 6.0). Section was blocked with 10% normal goat serum 30min at RT. Then primary antibody (1% BSA) was incubated at 4°C overnight. The primary is detected by a biotinylated secondary antibody and visualized using an HRP conjugated SP system.