



[Go to Product page](#)

Datasheet for ABIN7173541
anti-TSEN2 antibody (AA 1-220)

2 Images

Overview

Quantity:	100 µL
Target:	TSEN2
Binding Specificity:	AA 1-220
Reactivity:	Human
Host:	Rabbit
Clonality:	Polyclonal
Conjugate:	This TSEN2 antibody is un-conjugated
Application:	Western Blotting (WB), ELISA, Immunohistochemistry (IHC)

Product Details

Immunogen:	Recombinant Human tRNA-splicing endonuclease subunit Sen2 protein (1-220AA)
Isotype:	IgG
Cross-Reactivity:	Human
Purification:	Antigen Affinity Purified

Target Details

Target:	TSEN2
Alternative Name:	TSEN2 (TSEN2 Products)
Background:	Background: Constitutes one of the two catalytic subunit of the tRNA-splicing endonuclease complex, a complex responsible for identification and cleavage of the splice sites in pre-tRNA. It

Target Details

cleaves pre-tRNA at the 5' and 3'-splice sites to release the intron. The products are an intron and two tRNA half-molecules bearing 2',3'-cyclic phosphate and 5'-OH termini. There are no conserved sequences at the splice sites, but the intron is invariably located at the same site in the gene, placing the splice sites an invariant distance from the constant structural features of the tRNA body. Isoform 1 probably carries the active site for 5'-splice site cleavage. The tRNA splicing endonuclease is also involved in mRNA processing via its association with pre-mRNA 3'-end processing factors, establishing a link between pre-tRNA splicing and pre-mRNA 3'-end formation, suggesting that the endonuclease subunits function in multiple RNA-processing events. Isoform 2 is responsible for processing a yet unknown RNA substrate. The complex containing isoform 2 is not able to cleave pre-tRNAs properly, although it retains endonucleolytic activity.

Aliases: HsSen2 antibody, MGC2776 antibody, MGC4440 antibody, SEN2 antibody, SEN2_HUMAN antibody, SEN2L antibody, tRNA intron endonuclease Sen2 antibody, tRNA splicing endonuclease 2 homolog (SEN2, *S. cerevisiae*) antibody, tRNA splicing endonuclease subunit Sen2 antibody, tRNA-intron endonuclease sen2 antibody, tRNA-splicing endonuclease subunit Sen2 antibody, TSEN 2 antibody, TSEN2 antibody

UniProt: [Q8NCE0](#)

Pathways: [Nuclear Receptor Transcription Pathway](#), [Regulation of Lipid Metabolism by PPARalpha](#)

Application Details

Application Notes: Recommended dilution: WB:1:200-1:1000, IHC:1:50-1:200,

Restrictions: For Research Use only

Handling

Format: Liquid

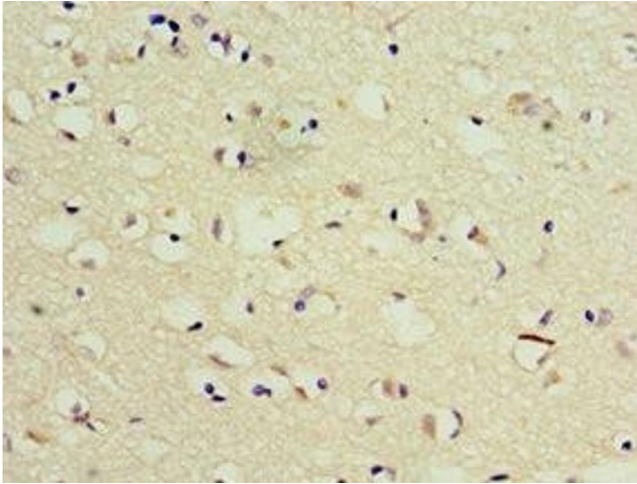
Buffer: PBS with 0.02 % sodium azide, 50 % glycerol, pH 7.3.

Preservative: Sodium azide

Precaution of Use: This product contains Sodium azide: a POISONOUS AND HAZARDOUS SUBSTANCE which should be handled by trained staff only.

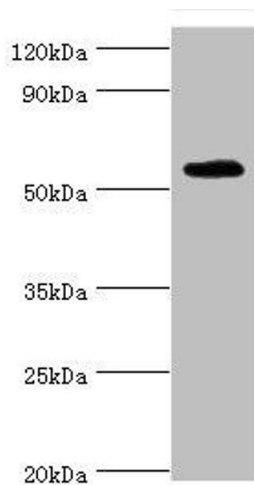
Storage: -20 °C,-80 °C

Storage Comment: Upon receipt, store at -20°C or -80°C. Avoid repeated freeze.



Immunohistochemistry

Image 1. Immunohistochemistry of paraffin-embedded human brain tissue using ABIN7173541 at dilution of 1:100



Western Blotting

Image 2. Western blot All lanes: TSEN2 antibody at 5 µg/mL + 293T whole cell lysate Secondary Goat polyclonal to rabbit IgG at 1/10000 dilution Predicted band size: 54, 52, 50, 48, 46 kDa Observed band size: 54 kDa