



[Go to Product page](#)

Datasheet for ABIN7173546  
**anti-TRO antibody (AA 1-164)**

1 Image

### Overview

Quantity:	100 µL
Target:	TRO
Binding Specificity:	AA 1-164
Reactivity:	Human
Host:	Rabbit
Clonality:	Polyclonal
Conjugate:	This TRO antibody is un-conjugated
Application:	ELISA, Immunofluorescence (IF)

### Product Details

Immunogen:	Recombinant Human Trophinin protein (1-164AA)
Isotype:	IgG
Cross-Reactivity:	Human
Purification:	>95%, Protein G purified

### Target Details

Target:	TRO
Alternative Name:	TRO ( <a href="#">TRO Products</a> )
Background:	Background: Could be involved with bystin and tastin in a cell adhesion molecule complex that mediates an initial attachment of the blastocyst to uterine epithelial cells at the time of the

## Target Details

embryo implantation. Directly responsible for homophilic cell adhesion.

Aliases: TRO antibody, KIAA1114 antibody, MAGED3 antibody, Trophinin antibody, MAGE-D3 antigen antibody

UniProt: [Q12816](#)

## Application Details

Application Notes: Recommended dilution: IF:1:50-1:200,

Restrictions: For Research Use only

## Handling

Format: Liquid

Buffer: Preservative: 0.03 % Proclin 300  
Constituents: 50 % Glycerol, 0.01M PBS, pH 7.4

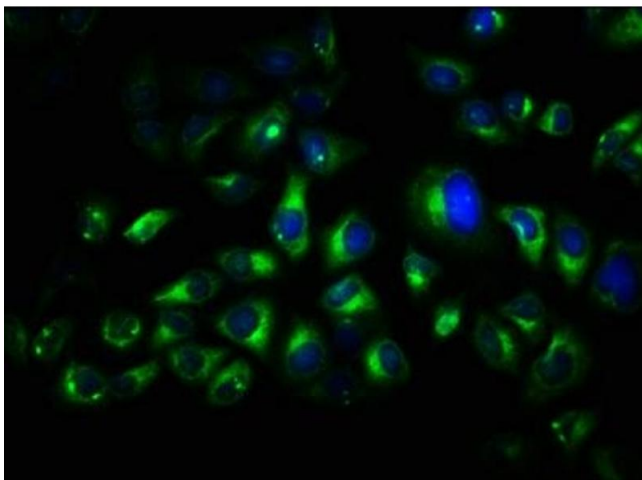
Preservative: ProClin

Precaution of Use: This product contains ProClin: a POISONOUS AND HAZARDOUS SUBSTANCE which should be handled by trained staff only.

Storage: -20 °C,-80 °C

Storage Comment: Upon receipt, store at -20°C or -80°C. Avoid repeated freeze.

## Images



### Immunofluorescence

**Image 1.** Immunofluorescence staining of HeLa cells with ABIN7173546 at 1:66, counter-stained with DAPI. The cells were fixed in 4 % formaldehyde, permeabilized using 0.2 % Triton X-100 and blocked in 10 % normal Goat Serum. The cells were then incubated with the antibody overnight at 4 °C. The secondary antibody was Alexa Fluor 488-conjugated AffiniPure Goat Anti-Rabbit IgG(H+L).