



[Go to Product page](#)

Datasheet for ABIN7173679
anti-TUBB2A antibody (AA 1-445)

1 Image

Overview

Quantity:	100 µg
Target:	TUBB2A
Binding Specificity:	AA 1-445
Reactivity:	Human
Host:	Rabbit
Clonality:	Polyclonal
Conjugate:	This TUBB2A antibody is un-conjugated
Application:	Western Blotting (WB), ELISA

Product Details

Immunogen:	Recombinant Human Tubulin beta-2A chain protein (1-445AA)
Isotype:	IgG
Cross-Reactivity:	Human
Purification:	>95%, Protein G purified

Target Details

Target:	TUBB2A
Alternative Name:	TUBB2A (TUBB2A Products)
Background:	Background: Tubulin is the major constituent of microtubules. It binds two moles of GTP, one at an exchangeable site on the beta chain and one at a non-exchangeable site on the alpha chain

Target Details

By similarity.

Aliases: TUBB2A antibody, TUBB2 antibody, Tubulin beta-2A chain antibody, Tubulin beta class IIa antibody

UniProt: [Q13885](#)

Pathways: [Microtubule Dynamics, M Phase](#)

Application Details

Application Notes: Recommended dilution: WB:1:1000-1:5000,

Restrictions: For Research Use only

Handling

Format: Liquid

Buffer: Preservative: 0.03 % Proclin 300
Constituents: 50 % Glycerol, 0.01M PBS, PH 7.4

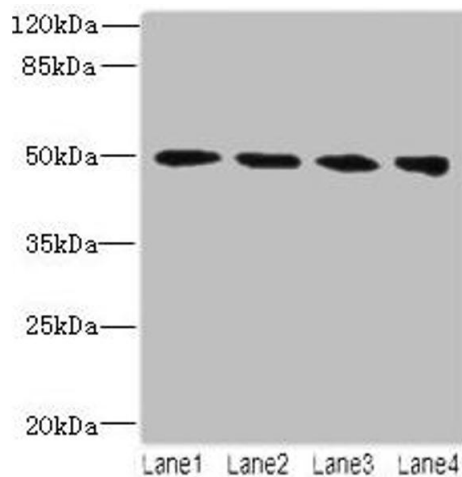
Preservative: ProClin

Precaution of Use: This product contains ProClin: a POISONOUS AND HAZARDOUS SUBSTANCE which should be handled by trained staff only.

Storage: -20 °C,-80 °C

Storage Comment: Upon receipt, store at -20°C or -80°C. Avoid repeated freeze.

Images



Western Blotting

Image 1. Western blot All lanes: TUBB2A antibody at 14 μ g/mL Lane 1: MCF-7 whole cell lysate Lane 2: HeLa whole cell lysate Lane 3: HepG2 whole cell lysate Lane 4: MDA-MB-231 whole cell lysate Secondary Goat polyclonal to rabbit IgG at 1/10000 dilution Predicted band size: 50 kDa Observed band size: 50 kDa