

Datasheet for ABIN7173707
anti-TTLL3 antibody (AA 470-641)[Go to Product page](#)

2 Images

Overview

Quantity:	100 µg
Target:	TTLL3
Binding Specificity:	AA 470-641
Reactivity:	Human
Host:	Rabbit
Clonality:	Polyclonal
Conjugate:	This TTLL3 antibody is un-conjugated
Application:	ELISA, Immunohistochemistry (IHC)

Product Details

Immunogen:	Recombinant Human Tubulin monoglycylase TTLL3 protein (470-641AA)
Isotype:	IgG
Cross-Reactivity:	Human
Purification:	>95%, Protein G purified

Target Details

Target:	TTLL3
Alternative Name:	TTLL3 (TTLL3 Products)
Background:	Background: Monoglycylase which modifies alpha- and beta-tubulin, generating side chains of glycine on the gamma-carboxyl groups of specific glutamate residues within the C-terminal tail

Target Details

of alpha- and beta-tubulin. Involved in the side-chain initiation step of the glycylation reaction by adding a single glycine chain to generate monoglycine side chains. Not involved in elongation step of the polyglycylation reaction.

Aliases: HOTTL antibody, PRO0207 antibody, Ttl3 antibody, TTLL3_HUMAN antibody, Tubulin monoglycylase TTLL3 antibody, Tubulin tyrosine ligase like protein 3 antibody, Tubulin--tyrosine ligase-like protein 3 antibody

UniProt: [Q9Y4R7](#)

Application Details

Application Notes: Recommended dilution: IHC:1:200-1:500,

Restrictions: For Research Use only

Handling

Format: Liquid

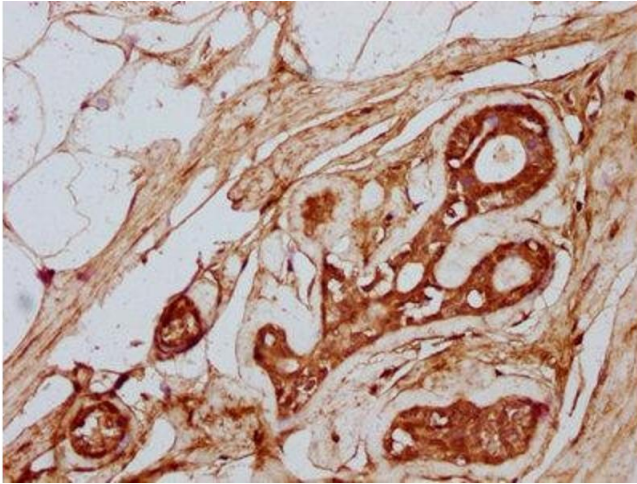
Buffer: Preservative: 0.03 % Proclin 300
Constituents: 50 % Glycerol, 0.01M PBS, pH 7.4

Preservative: ProClin

Precaution of Use: This product contains ProClin: a POISONOUS AND HAZARDOUS SUBSTANCE which should be handled by trained staff only.

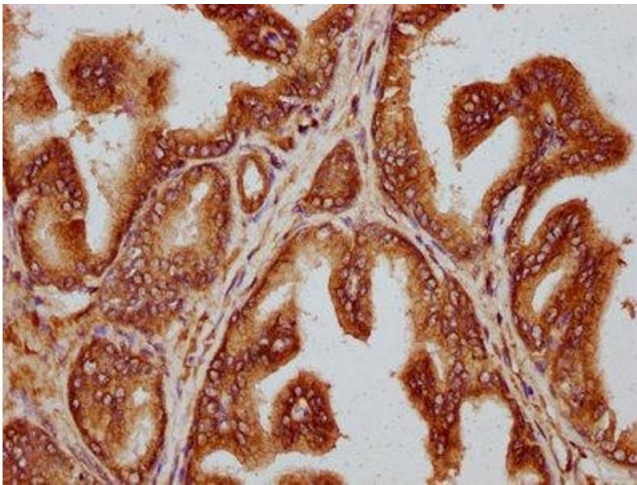
Storage: -20 °C,-80 °C

Storage Comment: Upon receipt, store at -20°C or -80°C. Avoid repeated freeze.



Immunohistochemistry

Image 1. IHC image of ABIN7173707 diluted at 1:300 and staining in paraffin-embedded human breast cancer performed on a Leica Bond™ system. After dewaxing and hydration, antigen retrieval was mediated by high pressure in a citrate buffer (pH 6.0). Section was blocked with 10% normal goat serum 30min at RT. Then primary antibody (1% BSA) was incubated at 4°C overnight. The primary is detected by a biotinylated secondary antibody and visualized using an HRP conjugated SP system.



Immunohistochemistry

Image 2. IHC image of ABIN7173707 diluted at 1:300 and staining in paraffin-embedded human prostate cancer performed on a Leica Bond™ system. After dewaxing and hydration, antigen retrieval was mediated by high pressure in a citrate buffer (pH 6.0). Section was blocked with 10% normal goat serum 30min at RT. Then primary antibody (1% BSA) was incubated at 4°C overnight. The primary is detected by a biotinylated secondary antibody and visualized using an HRP conjugated SP system.