



Datasheet for ABIN7173726  
**anti-TPPP3 antibody (AA 2-176)**



[Go to Product page](#)

2 Images

Overview

Quantity:	100 µg
Target:	TPPP3
Binding Specificity:	AA 2-176
Reactivity:	Human
Host:	Rabbit
Clonality:	Polyclonal
Conjugate:	This TPPP3 antibody is un-conjugated
Application:	ELISA, Immunohistochemistry (IHC)

Product Details

Immunogen:	Recombinant Human Tubulin polymerization-promoting protein family member 3 protein (2-176AA)
Isotype:	IgG
Cross-Reactivity:	Human
Purification:	>95%, Protein G purified

Target Details

Target:	TPPP3
Alternative Name:	TPPP3 ( <a href="#">TPPP3 Products</a> )
Background:	Background: Binds tubulin and has microtubule bundling activity. May play a role in cell

## Target Details

proliferation and mitosis.

Aliases: CGI-38 antibody, p20 antibody, p25gamma antibody, TPPP/p20 antibody, Tppp3 antibody, TPPP3\_HUMAN antibody, Tubulin polymerization-promoting protein family member 3 antibody

UniProt: [Q9BW30](#)

## Application Details

Application Notes: Recommended dilution: IHC:1:20-1:200,

Restrictions: For Research Use only

## Handling

Format: Liquid

Buffer: Preservative: 0.03 % Proclin 300  
Constituents: 50 % Glycerol, 0.01M PBS, PH 7.4

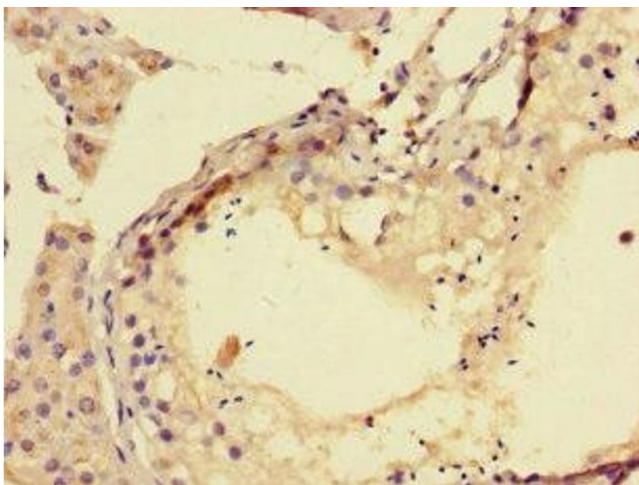
Preservative: ProClin

Precaution of Use: This product contains ProClin: a POISONOUS AND HAZARDOUS SUBSTANCE which should be handled by trained staff only.

Storage: -20 °C,-80 °C

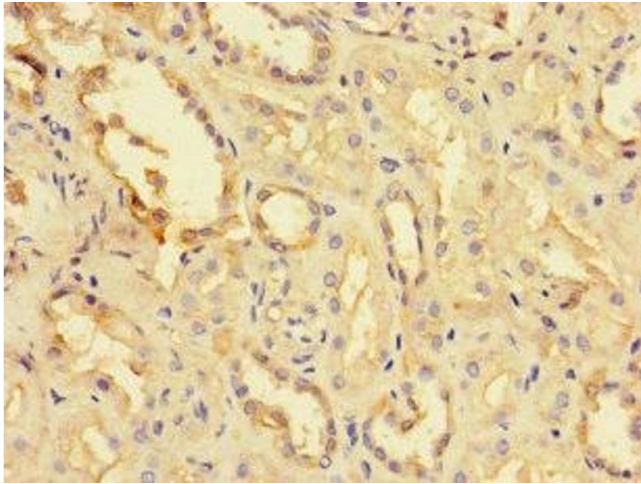
Storage Comment: Upon receipt, store at -20°C or -80°C. Avoid repeated freeze.

## Images



### Immunohistochemistry

**Image 1.** Immunohistochemistry of paraffin-embedded human testis tissue using ABIN7173726 at dilution of 1:100



### Immunohistochemistry

**Image 2.** Immunohistochemistry of paraffin-embedded human kidney tissue using ABIN7173726 at dilution of 1:100