



[Go to Product page](#)

Datasheet for ABIN7173734  
**anti-TBCB antibody (AA 1-244)**

4 Images

### Overview

Quantity:	100 µg
Target:	TBCB
Binding Specificity:	AA 1-244
Reactivity:	Human
Host:	Rabbit
Clonality:	Polyclonal
Conjugate:	This TBCB antibody is un-conjugated
Application:	Western Blotting (WB), ELISA, Immunohistochemistry (IHC), Immunofluorescence (IF), Immunoprecipitation (IP)

### Product Details

Immunogen:	Recombinant Human Tubulin-folding cofactor B protein (1-244AA)
Isotype:	IgG
Cross-Reactivity:	Human
Purification:	>95%, Protein G purified

### Target Details

Target:	TBCB
Alternative Name:	TBCB ( <a href="#">TBCB Products</a> )
Background:	Background: Binds to alpha-tubulin folding intermediates after their interaction with cytosolic

## Target Details

---

chaperonin in the pathway leading from newly synthesized tubulin to properly folded heterodimer. Involved in regulation of tubulin heterodimer dissociation. May function as a negative regulator of axonal growth.

Aliases: CG22 antibody, CKAPI antibody, Cytoskeleton associated protein 1 antibody, Cytoskeleton associated protein CKAPI antibody, Cytoskeleton-associated protein 1 antibody, Cytoskeleton-associated protein CKAPI antibody, TbcB antibody, TBCB\_HUMAN antibody, Tubulin folding cofactor B antibody, Tubulin specific chaperone B antibody, Tubulin-folding cofactor B antibody, Tubulin-specific chaperone B antibody

---

UniProt: [Q99426](#)

## Application Details

---

Application Notes: Recommended dilution: WB:1:1000-1:5000, IHC:1:20-1:200, IF:1:50-1:200, IP:1:200-1:2000,

Restrictions: For Research Use only

## Handling

---

Format: Liquid

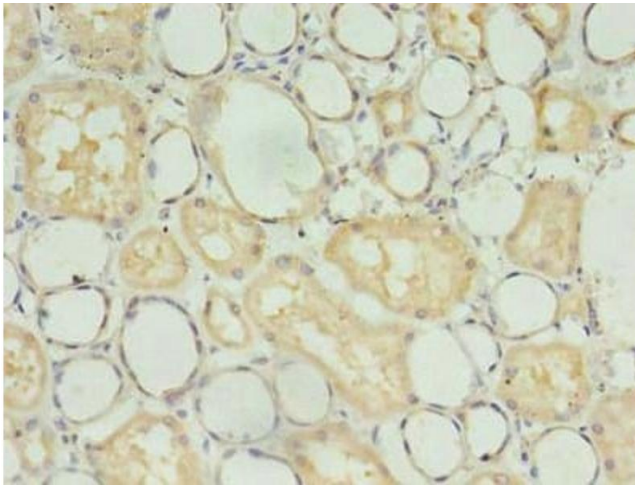
Buffer: Preservative: 0.03 % Proclin 300  
Constituents: 50 % Glycerol, 0.01M PBS, PH 7.4

Preservative: ProClin

Precaution of Use: This product contains ProClin: a POISONOUS AND HAZARDOUS SUBSTANCE which should be handled by trained staff only.

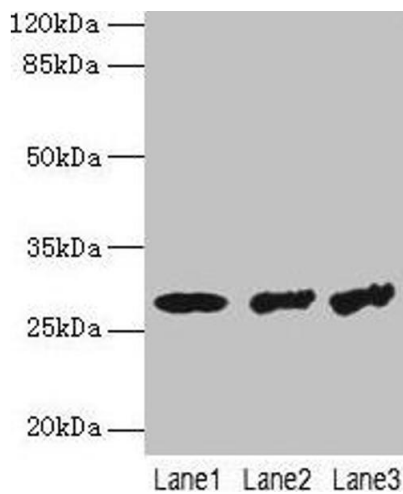
Storage: -20 °C,-80 °C

Storage Comment: Upon receipt, store at -20°C or -80°C. Avoid repeated freeze.



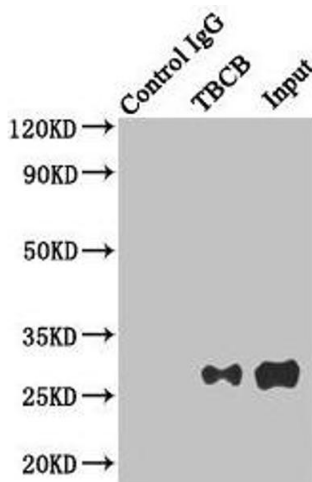
### Immunohistochemistry

**Image 1.** Immunohistochemistry of paraffin-embedded human kidney tissue using ABIN7173734 at dilution of 1:100



### Western Blotting

**Image 2.** Western blot All lanes: TBCB antibody at 4 µg/mL  
 Lane 1: HeLa whole cell lysate Lane 2: A549 whole cell lysate  
 Lane 3: Jurkat whole cell lysate Secondary Goat polyclonal to rabbit IgG at 1/10000 dilution Predicted band size: 28, 22 kDa Observed band size: 28 kDa



### Western Blotting

**Image 3.** Immunoprecipitating TBCB in HeLa whole cell lysate Lane 1: Rabbit control IgG instead of (1 µg) instead of ABIN7173734 in HeLa whole cell lysate. For western blotting, a HRP-conjugated anti-rabbit IgG, specific to the non-reduced form of IgG was used as the Secondary antibody (1/50000) Lane 2: ABIN7173734 (4 µg) + HeLa whole cell lysate (500 µg) Lane 3: HeLa whole cell lysate (20 µg)

Please check the [product details page](#) for more images. Overall 4 images are available for ABIN7173734.