



[Go to Product page](#)

Datasheet for ABIN7173868

## anti-RELT antibody (AA 26-153)

### 3 Images

#### Overview

Quantity:	100 µg
Target:	RELT
Binding Specificity:	AA 26-153
Reactivity:	Human
Host:	Rabbit
Clonality:	Polyclonal
Conjugate:	This RELT antibody is un-conjugated
Application:	Western Blotting (WB), ELISA, Immunohistochemistry (IHC), Immunofluorescence (IF)

#### Product Details

Immunogen:	Recombinant Human Tumor necrosis factor receptor superfamily member 19L protein (26-153AA)
Isotype:	IgG
Cross-Reactivity:	Human
Purification:	>95%, Protein G purified

#### Target Details

Target:	RELT
Alternative Name:	RELT ( <a href="#">RELT Products</a> )
Background:	Background: Mediates activation of NF-kappa-B. May play a role in T-cell activation.

## Target Details

Aliases: Receptor expressed in lymphoid tissues antibody, Relt antibody, TNFRSF19L antibody, TR19L\_HUMAN antibody, Tumor necrosis factor receptor superfamily member 19L antibody

UniProt: [Q969Z4](#)

## Application Details

Application Notes: Recommended dilution: WB:1:1000-1:5000, IHC:1:20-1:200, IF:1:20-1:200,

Restrictions: For Research Use only

## Handling

Format: Liquid

Buffer: Preservative: 0.03 % Proclin 300  
Constituents: 50 % Glycerol, 0.01M PBS, PH 7.4

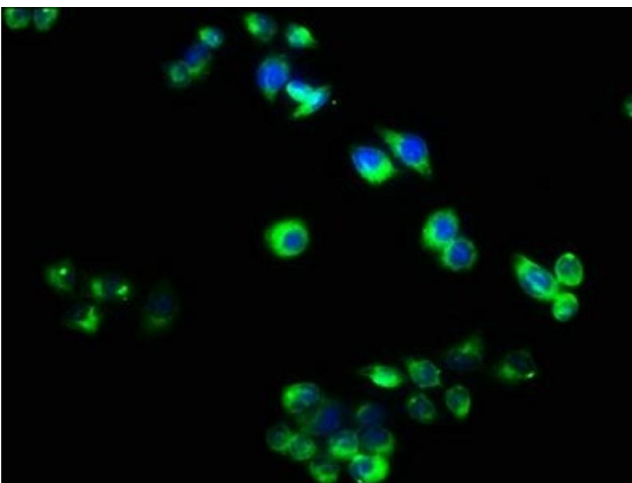
Preservative: ProClin

Precaution of Use: This product contains ProClin: a POISONOUS AND HAZARDOUS SUBSTANCE which should be handled by trained staff only.

Storage: -20 °C,-80 °C

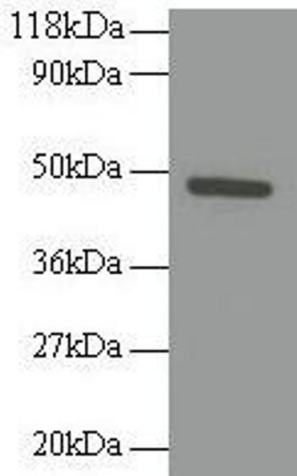
Storage Comment: Upon receipt, store at -20°C or -80°C. Avoid repeated freeze.

## Images



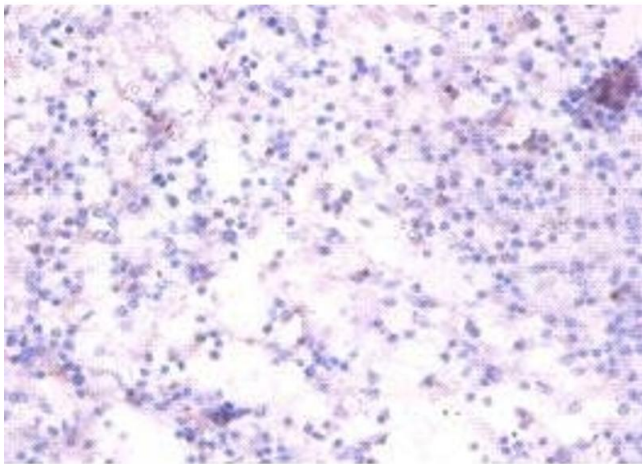
### Immunofluorescence

**Image 1.** Immunofluorescence staining of PC-3 cells with ABIN7173868 at 1:40, counter-stained with DAPI. The cells were fixed in 4% formaldehyde, permeabilized using 0.2% Triton X-100 and blocked in 10% normal Goat Serum. The cells were then incubated with the antibody overnight at 4°C. The secondary antibody was Alexa Fluor 488-conjugated AffiniPure Goat Anti-Rabbit IgG(H+L).



### Western Blotting

**Image 2.** Western blot All lanes: RELT antibody at 2 µg/mL + 293T whole cell lysate Secondary Goat polyclonal to rabbit IgG at 1/10000 dilution Predicted band size: 47 kDa Observed band size: 47 kDa



### Immunohistochemistry

**Image 3.** Immunohistochemistry of paraffin-embedded human spleen tissue using ABIN7173868 at dilution of 1:100