



[Go to Product page](#)

Datasheet for ABIN7173912
anti-TPD52L1 antibody (AA 1-144)

3 Images

Overview

Quantity:	100 µL
Target:	TPD52L1
Binding Specificity:	AA 1-144
Reactivity:	Human
Host:	Rabbit
Clonality:	Polyclonal
Conjugate:	This TPD52L1 antibody is un-conjugated
Application:	Western Blotting (WB), ELISA, Immunohistochemistry (IHC)

Product Details

Immunogen:	Recombinant Human Tumor protein D53 protein (1-144AA)
Isotype:	IgG
Cross-Reactivity:	Human
Purification:	Antigen Affinity Purified

Target Details

Target:	TPD52L1
Alternative Name:	TPD52L1 (TPD52L1 Products)
Background:	Background: cytoplasm, perinuclear region of cytoplasm, identical protein binding, protein heterodimerization activity, protein homodimerization activity, G2/M transition of mitotic cell

Target Details

cycle, positive regulation of apoptotic signaling pathway, positive regulation of JNK cascade, positive regulation of MAP kinase activity

Aliases: D53 antibody, D54 antibody, hD53 antibody, hD54 antibody, MGC73020 antibody, MGC8556 antibody, OTTHUMP00000017133 antibody, OTTHUMP00000017136 antibody, Tpd52l1 antibody, TPD52L2 antibody, TPD53_HUMAN antibody, Tumor protein D52 like 1 antibody, Tumor protein D52 like 2 antibody, Tumor protein D52-like 1 antibody, Tumor protein D53 antibody, Tumor protein D54 antibody

UniProt: [Q16890](#)

Pathways: [Positive Regulation of Endopeptidase Activity](#)

Application Details

Application Notes: Recommended dilution: WB:1:1000-1:5000, IHC:1:20-1:200,

Restrictions: For Research Use only

Handling

Format: Liquid

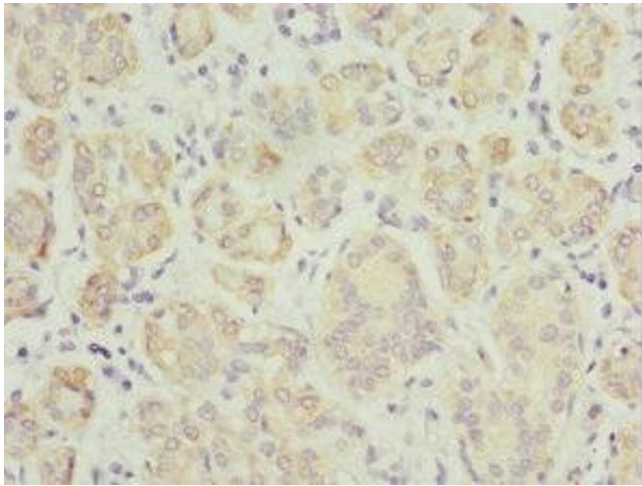
Buffer: PBS with 0.02 % sodium azide, 50 % glycerol, pH 7.3.

Preservative: Sodium azide

Precaution of Use: This product contains Sodium azide: a POISONOUS AND HAZARDOUS SUBSTANCE which should be handled by trained staff only.

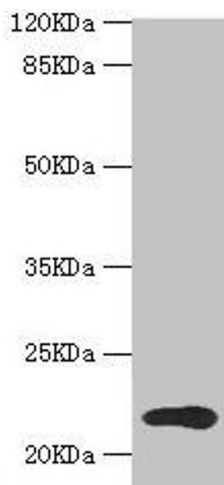
Storage: -20 °C,-80 °C

Storage Comment: Upon receipt, store at -20°C or -80°C. Avoid repeated freeze.



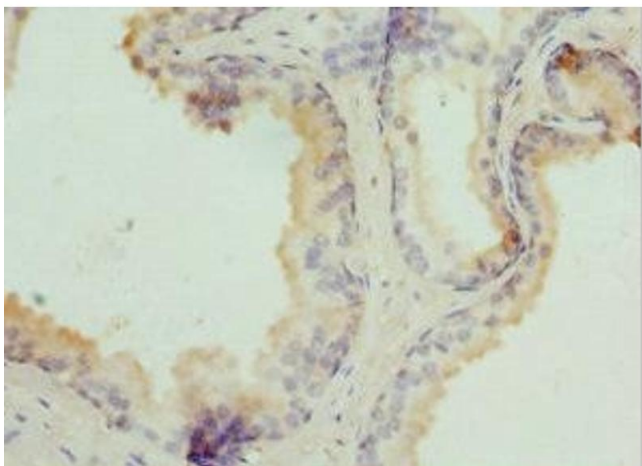
Immunohistochemistry

Image 1. Immunohistochemistry of paraffin-embedded human salivary gland tissue using ABIN7173912 at dilution of 1:100



Western Blotting

Image 2. Western blot All lanes: TPD52L1 antibody at 1.31 μ g/mL + MCF-7 whole cell lysate Secondary Goat polyclonal to rabbit IgG at 1/10000 dilution Predicted band size: 23, 17, 15, 12, 20 kDa Observed band size: 23 kDa



Immunohistochemistry

Image 3. Immunohistochemistry of paraffin-embedded human prostate cancer using ABIN7173912 at dilution of 1:100