

Datasheet for ABIN7174005
anti-ABL2 antibody (AA 862-1064)[Go to Product page](#)

1 Image

Overview

Quantity:	100 µg
Target:	ABL2
Binding Specificity:	AA 862-1064
Reactivity:	Human
Host:	Rabbit
Clonality:	Polyclonal
Conjugate:	This ABL2 antibody is un-conjugated
Application:	Western Blotting (WB), ELISA

Product Details

Immunogen:	Recombinant Human Tyrosine-protein kinase ABL2 protein (862-1064AA)
Isotype:	IgG
Cross-Reactivity:	Human
Purification:	>95%, Protein G purified

Target Details

Target:	ABL2
Alternative Name:	ABL2 (ABL2 Products)
Background:	Background: Non-receptor tyrosine-protein kinase that plays an ABL1-overlapping role in key processes linked to cell growth and survival such as cytoskeleton remodeling in response to

Target Details

extracellular stimuli, cell motility and adhesion and receptor endocytosis. Coordinates actin remodeling through tyrosine phosphorylation of proteins controlling cytoskeleton dynamics like MYH10 (involved in movement), CTTN (involved in signaling), or TUBA1 and TUBB (microtubule subunits). Binds directly F-actin and regulates actin cytoskeletal structure through its F-actin-bundling activity. Involved in the regulation of cell adhesion and motility through phosphorylation of key regulators of these processes such as CRK, CRKL, DOK1 or ARHGAP35. Adhesion-dependent phosphorylation of ARHGAP35 promotes its association with RASA1, resulting in recruitment of ARHGAP35 to the cell periphery where it inhibits RHO. Phosphorylates multiple receptor tyrosine kinases like PDGFRB and other substrates which are involved in endocytosis regulation such as RIN1. In brain, may regulate neurotransmission by phosphorylating proteins at the synapse. ABL2 acts also as a regulator of multiple pathological signaling cascades during infection. Pathogens can hijack ABL2 kinase signaling to reorganize the host actin cytoskeleton for multiple purposes, like facilitating intracellular movement and host cell exit. Finally, functions as its own regulator through autocatalytic activity as well as through phosphorylation of its inhibitor, ABI1.

Aliases: Abelson murine leukemia viral oncogene homolog 2 antibody, Abelson related gene protein antibody, Abelson tyrosine-protein kinase 2 antibody, Abelson-related gene protein antibody, ABL2 antibody, ABL2_HUMAN antibody, ABLL antibody, ARG antibody, Tyrosine kinase ARG antibody, Tyrosine protein kinase ABL2 antibody, Tyrosine-protein kinase ARG antibody, v abl Abelson murine leukemia viral oncogene homolog 2 antibody

UniProt: [P42684](#)

Application Details

Application Notes: Recommended dilution: WB:1:500-1:5000,

Restrictions: For Research Use only

Handling

Format: Liquid

Buffer: Preservative: 0.03 % Proclin 300
Constituents: 50 % Glycerol, 0.01M PBS, pH 7.4

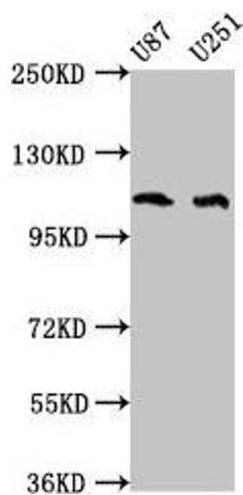
Preservative: ProClin

Precaution of Use: This product contains ProClin: a POISONOUS AND HAZARDOUS SUBSTANCE which should be handled by trained staff only.

Handling

Storage:	-20 °C,-80 °C
Storage Comment:	Upon receipt, store at -20°C or -80°C. Avoid repeated freeze.

Images



Western Blotting

Image 1. Western Blot Positive WB detected in: U87 whole cell lysate, U251 whole cell lysate All lanes: ABL2 antibody at 4 µg/mL Secondary Goat polyclonal to rabbit IgG at 1/50000 dilution Predicted band size: 129, 125, 127, 115, 118, 116, 117, 61 kDa Observed band size: 115 kDa