

Datasheet for ABIN7174015  
**anti-CSK antibody (AA 325-416)**[Go to Product page](#)

## 2 Images

## Overview

Quantity:	100 µL
Target:	CSK
Binding Specificity:	AA 325-416
Reactivity:	Human
Host:	Rabbit
Clonality:	Polyclonal
Conjugate:	This CSK antibody is un-conjugated
Application:	Western Blotting (WB), ELISA, Immunohistochemistry (IHC)

## Product Details

Immunogen:	Recombinant Human Tyrosine-protein kinase CSK protein (325-416AA)
Isotype:	IgG
Cross-Reactivity:	Human, Mouse
Purification:	Antigen Affinity Purified

## Target Details

Target:	CSK
Alternative Name:	CSK ( <a href="#">CSK Products</a> )
Background:	Background: Non-receptor tyrosine-protein kinase that plays an important role in the regulation of cell growth, differentiation, migration and immune response. Phosphorylates tyrosine

## Target Details

residues located in the C-terminal tails of Src-family kinases (SFKs) including LCK, SRC, HCK, FYN, LYN or YES1. Upon tail phosphorylation, Src-family members engage in intramolecular interactions between the phosphotyrosine tail and the SH2 domain that result in an inactive conformation. To inhibit SFKs, CSK is recruited to the plasma membrane via binding to transmembrane proteins or adapter proteins located near the plasma membrane. Suppresses signaling by various surface receptors, including T-cell receptor (TCR) and B-cell receptor (BCR) by phosphorylating and maintaining inactive several positive effectors such as FYN or LCK.

Aliases: C SRC antibody, C SRC kinase antibody, C src Tyrosine Kinase antibody, C-SRC kinase antibody, c-src tyrosine kinase antibody, Csk A antibody, CSK antibody, CSK\_HUMAN antibody, CYTOPLASMIC TYROSINE KINASE antibody, EC 2.7.10.2 antibody, MGC112926 antibody, MGC117393 antibody, MGC154049 antibody, P60 Src antibody, Protein tyrosine kinase CYL antibody, Protein-tyrosine kinase CYL antibody, Proto oncogene tyrosine protein kinase antibody, Tyrosine protein kinase CSK antibody, Tyrosine-protein kinase CSK antibody, zgc:154049 antibody

UniProt: [P41240](#)

Pathways: [TCR Signaling](#), [EGFR Signaling Pathway](#), [Cell-Cell Junction Organization](#), [CXCR4-mediated Signaling Events](#)

## Application Details

Application Notes: Recommended dilution: WB:1:1000-1:5000, IHC:1:20-1:200,

Restrictions: For Research Use only

## Handling

Format: Liquid

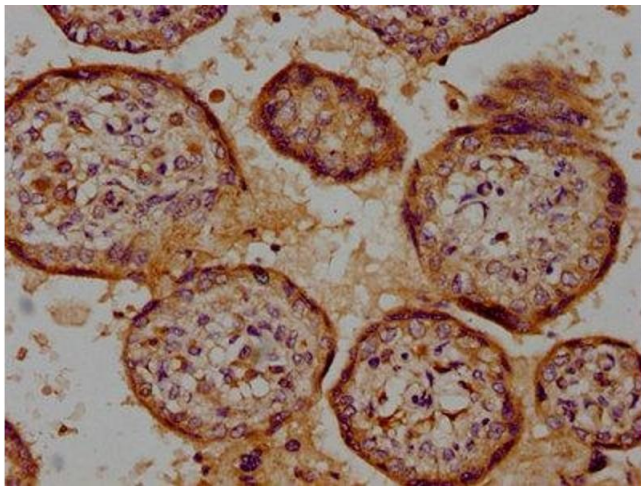
Buffer: Preservative: 0.03 % Proclin 300  
Constituents: 50 % Glycerol, 0.01M PBS, pH 7.4

Preservative: ProClin

Precaution of Use: This product contains ProClin: a POISONOUS AND HAZARDOUS SUBSTANCE which should be handled by trained staff only.

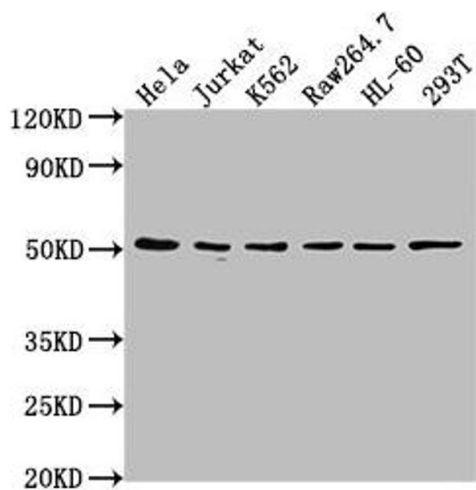
Storage: -20 °C,-80 °C

Storage Comment: Upon receipt, store at -20°C or -80°C. Avoid repeated freeze.



### Immunohistochemistry

**Image 1.** IHC image of ABIN7174015 diluted at 1:100 and staining in paraffin-embedded human placenta tissue performed on a Leica Bond™ system. After dewaxing and hydration, antigen retrieval was mediated by high pressure in a citrate buffer (pH 6.0). Section was blocked with 10 % normal goat serum 30 min at RT. Then primary antibody (1 % BSA) was incubated at 4 °C overnight. The primary is detected by a biotinylated secondary antibody and visualized using an HRP conjugated SP system.



### Western Blotting

**Image 2.** Western Blot Positive WB detected in: HeLa whole cell lysate, Jurkat whole cell lysate, K562 whole cell lysate, Raw264.7 whole cell lysate, HL-60 whole cell lysate, 293T whole cell lysate All lanes: CSK antibody at 1:2000 Secondary Goat polyclonal to rabbit IgG at 1/50000 dilution Predicted band size: 51 kDa Observed band size: 51 kDa