

Datasheet for ABIN7174038
anti-LCK antibody (AA 1-539)



[Go to Product page](#)

4 Images

Overview

Quantity:	100 µg
Target:	LCK
Binding Specificity:	AA 1-539
Reactivity:	Human
Host:	Rabbit
Clonality:	Polyclonal
Conjugate:	This LCK antibody is un-conjugated
Application:	ELISA, Immunohistochemistry (IHC), Immunofluorescence (IF), Immunoprecipitation (IP)

Product Details

Immunogen:	Recombinant Human Tyrosine-protein kinase Lck protein (1-539AA)
Isotype:	IgG
Cross-Reactivity:	Human
Purification:	>95%, Protein G purified

Target Details

Target:	LCK
Alternative Name:	LCK (LCK Products)
Background:	Background: Non-receptor tyrosine-protein kinase that plays an essential role in the selection and maturation of developing T-cells in the thymus and in the function of mature T-cells. Plays

a key role in T-cell antigen receptor (TCR)-linked signal transduction pathways. Constitutively associated with the cytoplasmic portions of the CD4 and CD8 surface receptors. Association of the TCR with a peptide antigen-bound MHC complex facilitates the interaction of CD4 and CD8 with MHC class II and class I molecules, respectively, thereby recruiting the associated LCK protein to the vicinity of the TCR/CD3 complex. LCK then phosphorylates tyrosines residues within the immunoreceptor tyrosine-based activation motifs (ITAM) of the cytoplasmic tails of the TCR-gamma chains and CD3 subunits, initiating the TCR/CD3 signaling pathway. Once stimulated, the TCR recruits the tyrosine kinase ZAP70, that becomes phosphorylated and activated by LCK. Following this, a large number of signaling molecules are recruited, ultimately leading to lymphokine production. LCK also contributes to signaling by other receptor molecules. Associates directly with the cytoplasmic tail of CD2, which leads to hyperphosphorylation and activation of LCK. Also plays a role in the IL2 receptor-linked signaling pathway that controls the T-cell proliferative response. Binding of IL2 to its receptor results in increased activity of LCK. Is expressed at all stages of thymocyte development and is required for the regulation of maturation events that are governed by both pre-TCR and mature alpha beta TCR. Phosphorylates other substrates including RUNX3, PTK2B/PYK2, the microtubule-associated protein MAPT, RHOF or TYROBP.

Aliases: IMD22 antibody, LCK antibody, Lck p56 antibody, LCK proto-oncogene, Src family tyrosine kinase antibody, LCK_HUMAN antibody, Leukocyte C-terminal Src kinase antibody, LSK antibody, Lymphocyte cell specific protein tyrosine kinase antibody, Lymphocyte cell-specific protein-tyrosine kinase antibody, Lymphocyte specific protein tyrosine kinase antibody, Membrane associated protein tyrosine kinase antibody, Oncogene lck antibody, P56 LCK antibody, p56(LSTRA) protein tyrosine kinase antibody, p56-LCK antibody, p56lck antibody, pp58 lck antibody, pp58lck antibody, Protein YT16 antibody, Proto oncogene tyrosine protein kinase LCK antibody, Proto-oncogene Lck antibody, Protooncogene tyrosine protein kinase LCK antibody, T cell specific protein tyrosine kinase antibody, T cell-specific protein-tyrosine kinase antibody, T lymphocyte specific protein tyrosine kinase p56lck antibody, Tyrosine-protein kinase Lck antibody, YT 16 antibody, YT16 antibody

UniProt:	P06239
Pathways:	TCR Signaling , Fc-epsilon Receptor Signaling Pathway , EGFR Signaling Pathway , Neurotrophin Signaling Pathway , Transition Metal Ion Homeostasis , Positive Regulation of Endopeptidase Activity , CXCR4-mediated Signaling Events , Thromboxane A2 Receptor Signaling

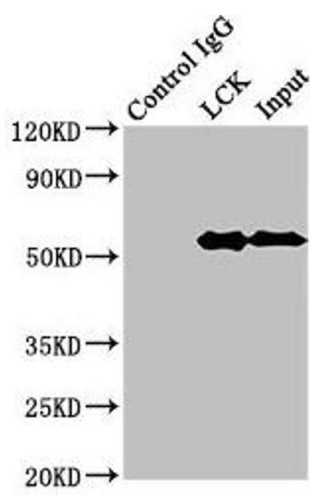
Application Details

Application Notes:	Recommended dilution: IHC:1:20-1:200, IF:1:50-1:200, IP:1:200-1:2000,
--------------------	---

Application Details

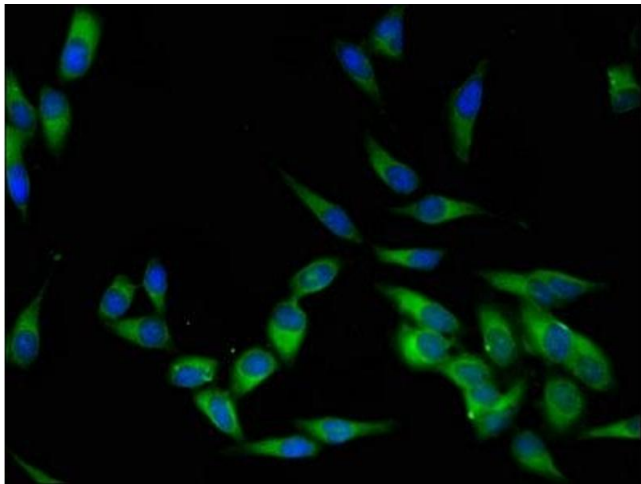
Restrictions:	For Research Use only
Handling	
Format:	Liquid
Buffer:	Preservative: 0.03 % Proclin 300 Constituents: 50 % Glycerol, 0.01M PBS, PH 7.4
Preservative:	ProClin
Precaution of Use:	This product contains ProClin: a POISONOUS AND HAZARDOUS SUBSTANCE which should be handled by trained staff only.
Storage:	-20 °C,-80 °C
Storage Comment:	Upon receipt, store at -20°C or -80°C. Avoid repeated freeze.

Images



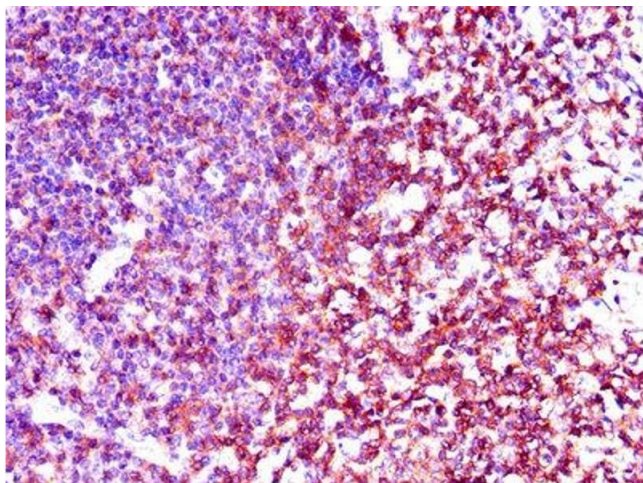
Western Blotting

Image 1. Immunoprecipitating LCK in Jurkat whole cell lysate Lane 1: Rabbit control IgG (1 µg) instead of ABIN7174038 in Jurkat whole cell lysate. For western blotting, a HRP-conjugated Protein G antibody was used as the secondary antibody (1/2000) Lane 2: ABIN7174038 (8 µg) + Jurkat whole cell lysate (500 µg) Lane 3: Jurkat whole cell lysate (10 µg)



Immunofluorescence

Image 2. Immunofluorescent analysis of Hela cells using ABIN7174038 at dilution of 1:100 and Alexa Fluor 488-conjugated AffiniPure Goat Anti-Rabbit IgG(H+L)



Immunohistochemistry

Image 3. Immunohistochemistry of paraffin-embedded human tonsil tissue using ABIN7174038 at dilution of 1:100

Please check the [product details page](#) for more images. Overall 4 images are available for ABIN7174038.