

Datasheet for ABIN7174052
anti-TYRO3 antibody (AA 728-873)

3 Images

[Go to Product page](#)

Overview

Quantity:	100 µg
Target:	TYRO3
Binding Specificity:	AA 728-873
Reactivity:	Human
Host:	Rabbit
Clonality:	Polyclonal
Conjugate:	This TYRO3 antibody is un-conjugated
Application:	ELISA, Immunohistochemistry (IHC), Immunofluorescence (IF)

Product Details

Immunogen:	Recombinant Human Tyrosine-protein kinase receptor TYRO3 protein (728-873AA)
Isotype:	IgG
Cross-Reactivity:	Human
Purification:	>95%, Protein G purified

Target Details

Target:	TYRO3
Alternative Name:	TYRO3 (TYRO3 Products)
Background:	Background: Receptor tyrosine kinase that transduces signals from the extracellular matrix into the cytoplasm by binding to several ligands including TULP1 or GAS6. Regulates many

Target Details

physiological processes including cell survival, migration and differentiation. Ligand binding at the cell surface induces dimerization and autophosphorylation of TYRO3 on its intracellular domain that provides docking sites for downstream signaling molecules. Following activation by ligand, interacts with PIK3R1 and thereby enhances PI3-kinase activity. Activates the AKT survival pathway, including nuclear translocation of NF-kappa-B and up-regulation of transcription of NF-kappa-B-regulated genes. TYRO3 signaling plays a role in various processes such as neuron protection from excitotoxic injury, platelet aggregation and cytoskeleton reorganization. Plays also an important role in inhibition of Toll-like receptors (TLRs)-mediated innate immune response by activating STAT1, which selectively induces production of suppressors of cytokine signaling SOCS1 and SOCS3.

Aliases: Brt antibody, BYK antibody, DTK antibody, Etk-2 antibody, protein tyrosine kinase 3 antibody, Rek antibody, RSE antibody, SKY antibody, Tif antibody, tyro3 antibody, TYRO3 protein tyrosine kinase antibody, TYRO3_HUMAN antibody, Tyrosine-protein kinase byk antibody, Tyrosine-protein kinase DTK antibody, Tyrosine-protein kinase receptor TYRO3 antibody, Tyrosine-protein kinase RSE antibody, Tyrosine-protein kinase SKY antibody, Tyrosine-protein kinase TIF antibody

UniProt: [Q06418](#)

Pathways: [RTK Signaling](#)

Application Details

Application Notes: Recommended dilution: IHC:1:20-1:200, IF:1:50-1:200,

Restrictions: For Research Use only

Handling

Format: Liquid

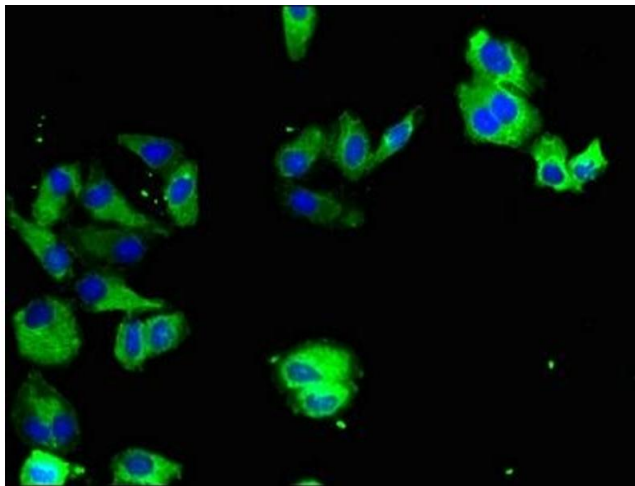
Buffer: Preservative: 0.03 % Proclin 300
Constituents: 50 % Glycerol, 0.01M PBS, pH 7.4

Preservative: ProClin

Precaution of Use: This product contains ProClin: a POISONOUS AND HAZARDOUS SUBSTANCE which should be handled by trained staff only.

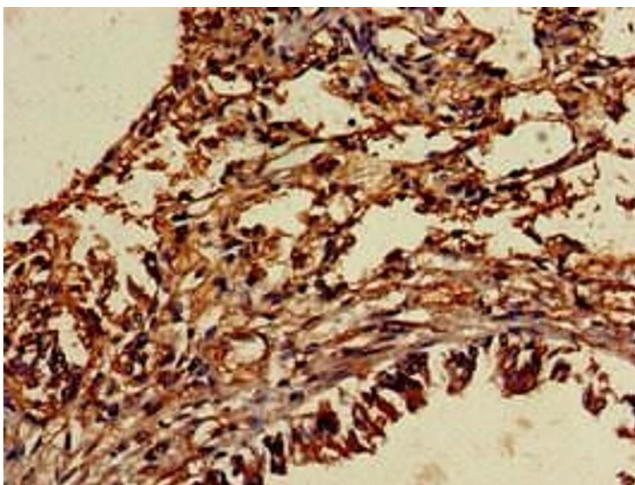
Storage: -20 °C,-80 °C

Storage Comment: Upon receipt, store at -20°C or -80°C. Avoid repeated freeze.



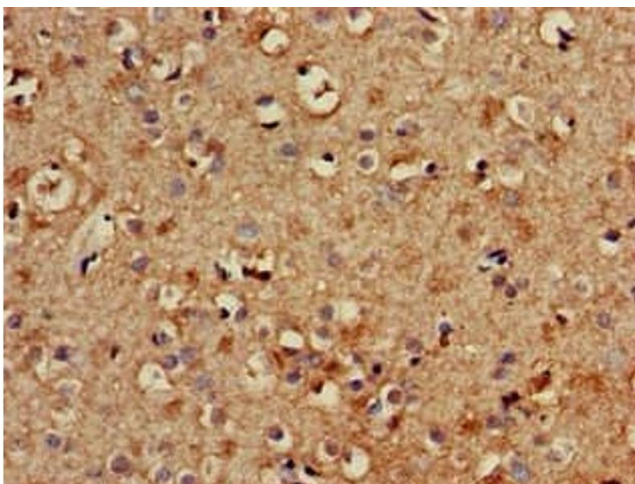
Immunofluorescence

Image 1. Immunofluorescent analysis of HepG2 cells using ABIN7174052 at dilution of 1:100 and Alexa Fluor 488-conjugated AffiniPure Goat Anti-Rabbit IgG(H+L)



Immunohistochemistry

Image 2. Immunohistochemistry of paraffin-embedded human lung tissue using ABIN7174052 at dilution of 1:100



Immunohistochemistry

Image 3. Immunohistochemistry of paraffin-embedded human brain tissue using ABIN7174052 at dilution of 1:100