

Datasheet for ABIN7174080
anti-YES1 antibody (AA 1-155)[Go to Product page](#)

4 Images

Overview

Quantity:	100 µg
Target:	YES1
Binding Specificity:	AA 1-155
Reactivity:	Human
Host:	Rabbit
Clonality:	Polyclonal
Conjugate:	This YES1 antibody is un-conjugated
Application:	Western Blotting (WB), ELISA, Immunohistochemistry (IHC), Immunofluorescence (IF)

Product Details

Immunogen:	Recombinant Human Tyrosine-protein kinase Yes protein (1-155AA)
Isotype:	IgG
Cross-Reactivity:	Human
Purification:	>95%, Protein G purified

Target Details

Target:	YES1
Alternative Name:	YES1 (YES1 Products)
Background:	Background: Non-receptor protein tyrosine kinase that is involved in the regulation of cell growth and survival, apoptosis, cell-cell adhesion, cytoskeleton remodeling, and differentiation.

Target Details

Stimulation by receptor tyrosine kinases (RTKs) including EGRF, PDGFR, CSF1R and FGFR leads to recruitment of YES1 to the phosphorylated receptor, and activation and phosphorylation of downstream substrates. Upon EGFR activation, promotes the phosphorylation of PARD3 to favor epithelial tight junction assembly. Participates in the phosphorylation of specific junctional components such as CTNND1 by stimulating the FYN and FER tyrosine kinases at cell-cell contacts. Upon T-cell stimulation by CXCL12, phosphorylates collapsin response mediator protein 2/DPYSL2 and induces T-cell migration. Participates in CD95L/FASLG signaling pathway and mediates AKT-mediated cell migration. Plays a role in cell cycle progression by phosphorylating the cyclin-dependent kinase 4/CDK4 thus regulating the G1 phase. Also involved in G2/M progression and cytokinesis.

Aliases: c Yes antibody, Cellular Yes 1 protein antibody, Cellular Yes1 protein antibody, HsT441 antibody, P61 YES antibody, p61-Yes antibody, Proto oncogene tyrosine protein kinase YES antibody, Proto-oncogene c-Yes antibody, Tyrosine-protein kinase Yes antibody, v yes 1 Yamaguchi sarcoma viral oncogene homolog 1 antibody, Viral oncogene yes 1 homolog 1 antibody, Viral oncogene yes1 homolog 1 antibody, Yamaguchi sarcoma oncogene antibody, Yes 1 antibody, Yes antibody, YES proto oncogene 1, Src family tyrosine kinase antibody, YES_HUMAN antibody, YES1 antibody, YES1 proto oncogene, Src family tyrosine kinase antibody

UniProt: [P07947](#)

Pathways: [CXCR4-mediated Signaling Events](#), [Signaling Events mediated by VEGFR1 and VEGFR2](#), [Thromboxane A2 Receptor Signaling](#)

Application Details

Application Notes: Recommended dilution: WB:1:1000-1:5000, IHC:1:20-1:200, IF:1:50-1:200,

Restrictions: For Research Use only

Handling

Format: Liquid

Buffer: Preservative: 0.03 % Proclin 300
Constituents: 50 % Glycerol, 0.01M PBS, PH 7.4

Preservative: ProClin

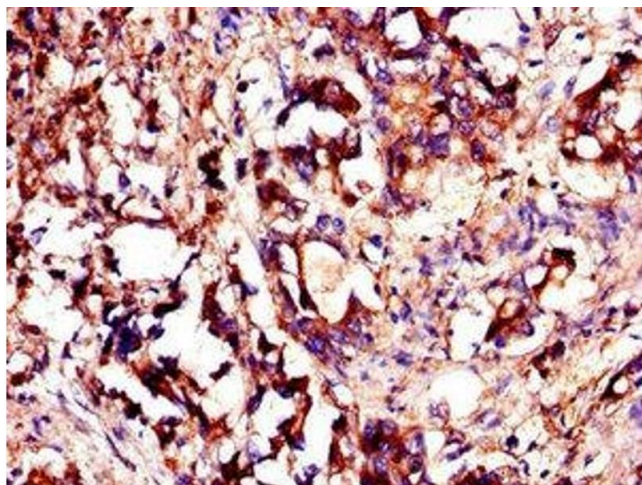
Precaution of Use: This product contains ProClin: a POISONOUS AND HAZARDOUS SUBSTANCE which should be handled by trained staff only.

Handling

Storage: -20 °C, -80 °C

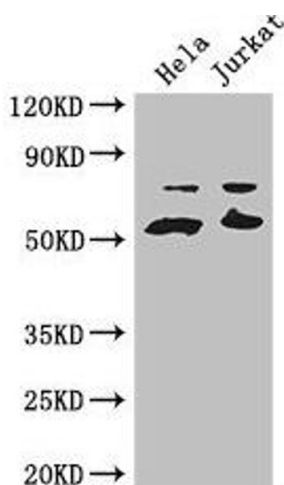
Storage Comment: Upon receipt, store at -20°C or -80°C. Avoid repeated freeze.

Images



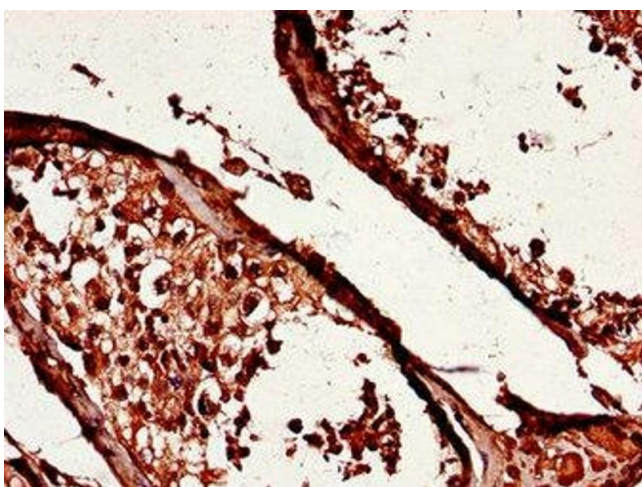
Immunohistochemistry

Image 1. Immunohistochemistry of paraffin-embedded human gastric cancer using ABIN7174080 at dilution of 1:100



Western Blotting

Image 2. Western Blot Positive WB detected in: HeLa whole cell lysate, Jurkat whole cell lysate All lanes: YES1 antibody at 3.2 µg/mL Secondary Goat polyclonal to rabbit IgG at 1/50000 dilution Predicted band size: 61 kDa Observed band size: 61, 70 kDa



Immunohistochemistry

Image 3. Immunohistochemistry of paraffin-embedded human testis tissue using ABIN7174080 at dilution of 1:100

Please check the [product details page](#) for more images. Overall 4 images are available for ABIN7174080.