



[Go to Product page](#)

Datasheet for ABIN7174147  
**anti-ZRSR2 antibody (AA 191-372)**

3 Images

Overview

Quantity:	100 µg
Target:	ZRSR2
Binding Specificity:	AA 191-372
Reactivity:	Human
Host:	Rabbit
Clonality:	Polyclonal
Conjugate:	This ZRSR2 antibody is un-conjugated
Application:	Western Blotting (WB), ELISA, Immunohistochemistry (IHC), Immunofluorescence (IF)

Product Details

Immunogen:	Recombinant Human U2 small nuclear ribonucleoprotein auxiliary factor 35 kDa subunit-related protein 2 protein (191-372AA)
Isotype:	IgG
Cross-Reactivity:	Human, Mouse
Purification:	>95%, Protein G purified

Target Details

Target:	ZRSR2
Alternative Name:	ZRSR2 ( <a href="#">ZRSR2 Products</a> )
Background:	Background: Pre-mRNA-binding protein required for splicing of both U2- and U12-type introns.

## Target Details

---

Selectively interacts with the 3'-splice site of U2- and U12-type pre-mRNAs and promotes different steps in U2 and U12 intron splicing. Recruited to U12 pre-mRNAs in an ATP-dependent manner and is required for assembly of the prespliceosome, a precursor to other spliceosomal complexes. For U2-type introns, it is selectively and specifically required for the second step of splicing.

Aliases: CCCH type zinc finger antibody, CCCH type zinc finger, RNA binding motif and serine/arginine rich protein 2 antibody, MGC142014 antibody, MGC142040 antibody, Renal carcinoma antigen NY REN 20 antibody, Renal carcinoma antigen NY-REN-20 antibody, RNA-binding motif and serine/arginine rich protein 2 antibody, U2 small nuclear ribonucleoprotein auxiliary factor 35 kDa subunit related protein 2 antibody, U2 small nuclear ribonucleoprotein auxiliary factor 35 kDa subunit-related protein 2 antibody, U2(RNU2) small nuclear RNA auxiliary factor 1 like 2 antibody, U2(RNU2) small nuclear RNA auxiliary factor 1-like 2 antibody, U2AF1 RS2 antibody, U2AF1L2 antibody, U2AF1RS2 antibody, U2AF35-related protein antibody, U2AFM\_HUMAN antibody, URP antibody, Zinc finger-, CCCH domain-, and RNA-binding motif-containing serine/arginine-rich protein 2 antibody, Zrsr2 antibody

---

UniProt: [Q15696](#)

---

Pathways: [Ribonucleoprotein Complex Subunit Organization](#)

## Application Details

---

Application Notes: Recommended dilution: WB:1:500-1:5000, IHC:1:20-1:200, IF:1:50-1:200,

---

Restrictions: For Research Use only

## Handling

---

Format: Liquid

---

Buffer: Preservative: 0.03 % Proclin 300  
Constituents: 50 % Glycerol, 0.01M PBS, PH 7.4

---

Preservative: ProClin

---

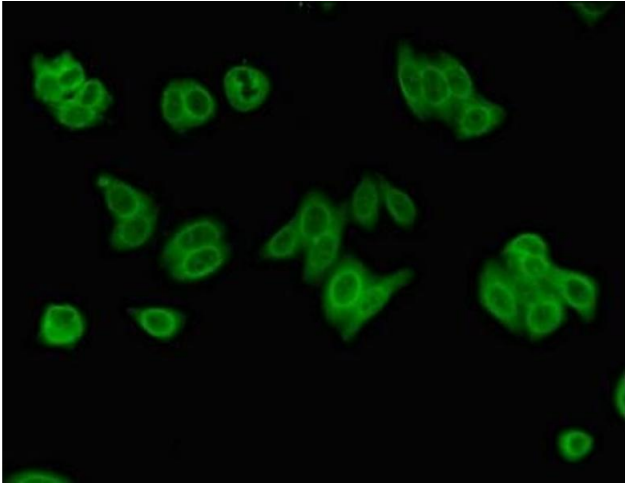
Precaution of Use: This product contains ProClin: a POISONOUS AND HAZARDOUS SUBSTANCE which should be handled by trained staff only.

---

Storage: -20 °C,-80 °C

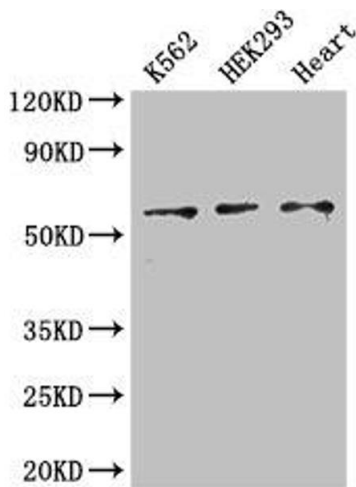
---

Storage Comment: Upon receipt, store at -20°C or -80°C. Avoid repeated freeze.



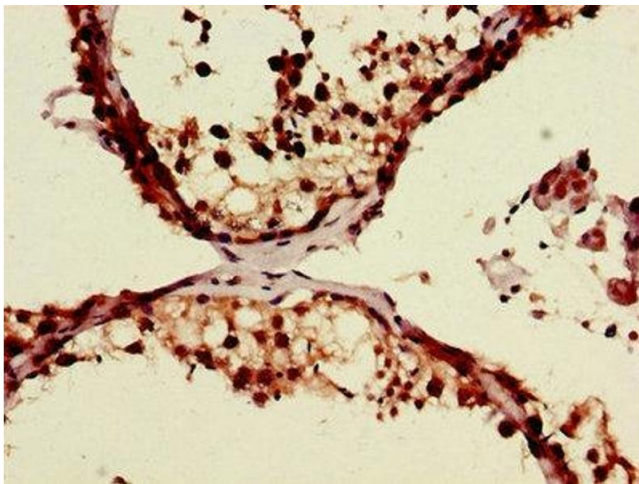
### Immunofluorescence

**Image 1.** Immunofluorescent analysis of HepG2 cells using ABIN7174147 at dilution of 1:100 and Alexa Fluor 488-conjugated AffiniPure Goat Anti-Rabbit IgG(H+L)



### Western Blotting

**Image 2.** Western Blot Positive WB detected in: K562 whole cell lysate, HEK293 whole cell lysate, Mouse heart tissue All lanes: ZRSR2 antibody at 3 µg/mL Secondary Goat polyclonal to rabbit IgG at 1/50000 dilution Predicted band size: 59 kDa Observed band size: 59 kDa



### Immunohistochemistry

**Image 3.** Immunohistochemistry of paraffin-embedded human testis tissue using ABIN7174147 at dilution of 1:100