

Datasheet for ABIN7174204  
**anti-NAA38 antibody (AA 2-96)**[Go to Product page](#)

## 2 Images

## Overview

Quantity:	100 µg
Target:	NAA38
Binding Specificity:	AA 2-96
Reactivity:	Human
Host:	Rabbit
Clonality:	Polyclonal
Conjugate:	This NAA38 antibody is un-conjugated
Application:	ELISA, Immunohistochemistry (IHC)

## Product Details

Immunogen:	Recombinant Human U6 snRNA-associated Sm-like protein LSm8 protein (2-96AA)
Isotype:	IgG
Cross-Reactivity:	Human
Purification:	>95%, Protein G purified

## Target Details

Target:	NAA38
Alternative Name:	LSM8 ( <a href="#">NAA38 Products</a> )
Background:	Background: Binds specifically to the 3\'-terminal U-tract of U6 snRNA and is probably a component of the spliceosome.

## Target Details

Aliases: LSM8U6 snRNA-associated Sm-like protein LSM8 antibody

UniProt: [095777](#)

## Application Details

Application Notes: Recommended dilution: IHC:1:500-1:1000,

Restrictions: For Research Use only

## Handling

Format: Liquid

Buffer: Preservative: 0.03 % Proclin 300  
Constituents: 50 % Glycerol, 0.01M PBS, pH 7.4

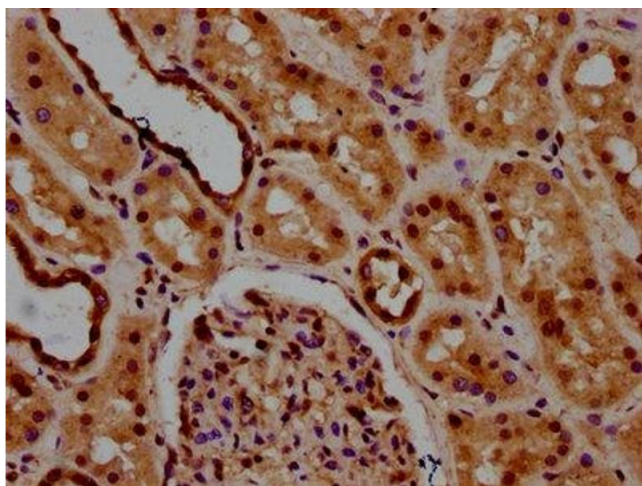
Preservative: ProClin

Precaution of Use: This product contains ProClin: a POISONOUS AND HAZARDOUS SUBSTANCE which should be handled by trained staff only.

Storage: -20 °C,-80 °C

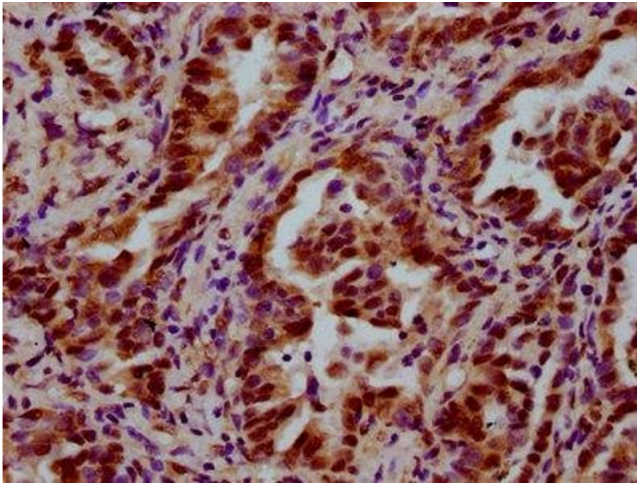
Storage Comment: Upon receipt, store at -20°C or -80°C. Avoid repeated freeze.

## Images



### Immunohistochemistry

**Image 1.** IHC image of ABIN7174204 diluted at 1:600 and staining in paraffin-embedded human kidney tissue performed on a Leica Bond™ system. After dewaxing and hydration, antigen retrieval was mediated by high pressure in a citrate buffer (pH 6.0). Section was blocked with 10% normal goat serum 30min at RT. Then primary antibody (1% BSA) was incubated at 4°C overnight. The primary is detected by a biotinylated secondary antibody and visualized using an HRP conjugated SP system.



#### Immunohistochemistry

**Image 2.** IHC image of ABIN7174204 diluted at 1:600 and staining in paraffin-embedded human lung cancer performed on a Leica Bond<sup>TM</sup> system. After dewaxing and hydration, antigen retrieval was mediated by high pressure in a citrate buffer (pH 6.0). Section was blocked with 10% normal goat serum 30min at RT. Then primary antibody (1% BSA) was incubated at 4°C overnight. The primary is detected by a biotinylated secondary antibody and visualized using an HRP conjugated SP system.