

Datasheet for ABIN7174362
anti-CYLD antibody (C-Term)[Go to Product page](#)

3 Images

Overview

Quantity:	100 µg
Target:	CYLD
Binding Specificity:	AA 269-435, C-Term
Reactivity:	Human
Host:	Rabbit
Clonality:	Polyclonal
Conjugate:	This CYLD antibody is un-conjugated
Application:	ELISA, Immunohistochemistry (IHC), Immunofluorescence (IF)

Product Details

Immunogen:	Recombinant Human Ubiquitin carboxyl-terminal hydrolase CYLD protein (269-435AA)
Isotype:	IgG
Cross-Reactivity:	Human
Purification:	>95%, Protein G purified

Target Details

Target:	CYLD
Alternative Name:	CYLD (CYLD Products)
Background:	Background: Deubiquitinase that specifically cleaves 'Lys-63'-linked polyubiquitin chains. Has endodeubiquitinase activity. Plays an important role in the regulation of pathways leading to

Target Details

NF-kappa-B activation (PubMed:12917689, PubMed:12917691). Contributes to the regulation of cell survival, proliferation and differentiation via its effects on NF-kappa-B activation (PubMed:12917690). Negative regulator of Wnt signaling (PubMed:20227366). Inhibits HDAC6 and thereby promotes acetylation of alpha-tubulin and stabilization of microtubules (PubMed:19893491). Plays a role in the regulation of microtubule dynamics, and thereby contributes to the regulation of cell proliferation, cell polarization, cell migration, and angiogenesis (PubMed:18222923, PubMed:20194890). Required for normal cell cycle progress and normal cytokinesis (PubMed:17495026, PubMed:19893491). Inhibits nuclear translocation of NF-kappa-B. Plays a role in the regulation of inflammation and the innate immune response, via its effects on NF-kappa-B activation (PubMed:18636086). Dispensable for the maturation of intrathymic natural killer cells, but required for the continued survival of immature natural killer cells. Negatively regulates TNFRSF11A signaling and osteoclastogenesis (By similarity). Involved in the regulation of ciliogenesis, allowing ciliary basal bodies to migrate and dock to the plasma membrane, this process does not depend on NF-kappa-B activation (By similarity). Also able to remove linear ('Met-1'-linked) polyubiquitin chains to regulate innate immunity: recruited to the LUBAC complex and, together with OTULIN, restricts linear polyubiquitin formation on RIPK2 in response to NOD2 stimulation (PubMed:26670046, PubMed:26997266). Aliases: BRSS antibody, CDMT antibody, Cyld antibody, CYLD gene antibody, CYLD_HUMAN antibody, CYLD1 antibody, CYLDI antibody, cylindromatosis (turban tumor syndrome) antibody, cylindromatosis 1 antibody, Deubiquitinating enzyme CYLD antibody, EAC antibody, HSPC057 antibody, KIAA0849 antibody, MFT antibody, MFT1 antibody, Probable ubiquitin carboxyl terminal hydrolase CYLD antibody, SBS antibody, TEM antibody, turban tumor syndrome antibody, Ubiquitin carboxyl-terminal hydrolase CYLD antibody, ubiquitin specific peptidase like 2 antibody, ubiquitin thioesterase CYLD antibody, Ubiquitin thiolesterase CYLD antibody, Ubiquitin-specific processing protease CYLD antibody, Ubiquitin-specific-processing protease CYLD antibody, USPL2 antibody

UniProt: [Q9NQC7](#)

Pathways: [Apoptosis](#), [Activation of Innate immune Response](#)

Application Details

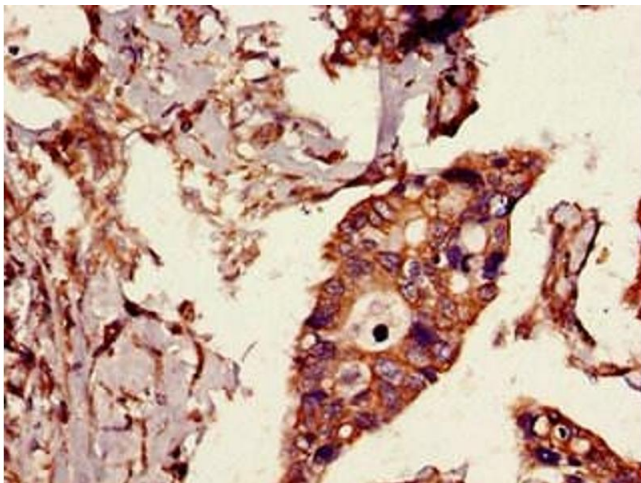
Application Notes: Recommended dilution: IHC:1:20-1:200, IF:1:50-1:200,

Restrictions: For Research Use only

Handling

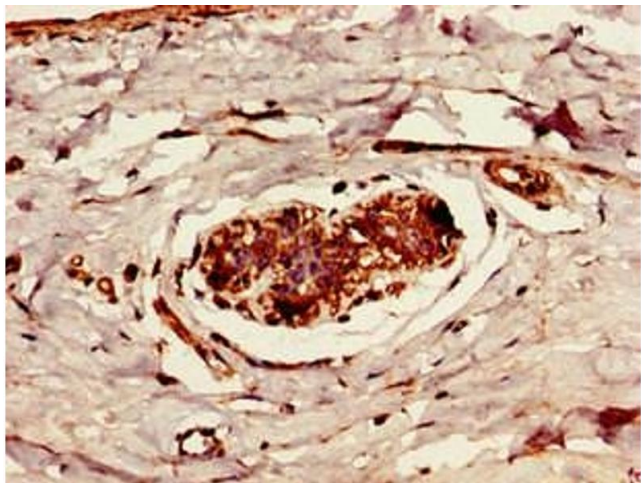
Format:	Liquid
Buffer:	Preservative: 0.03 % Proclin 300 Constituents: 50 % Glycerol, 0.01M PBS, pH 7.4
Preservative:	ProClin
Precaution of Use:	This product contains ProClin: a POISONOUS AND HAZARDOUS SUBSTANCE which should be handled by trained staff only.
Storage:	-20 °C,-80 °C
Storage Comment:	Upon receipt, store at -20°C or -80°C. Avoid repeated freeze.

Images



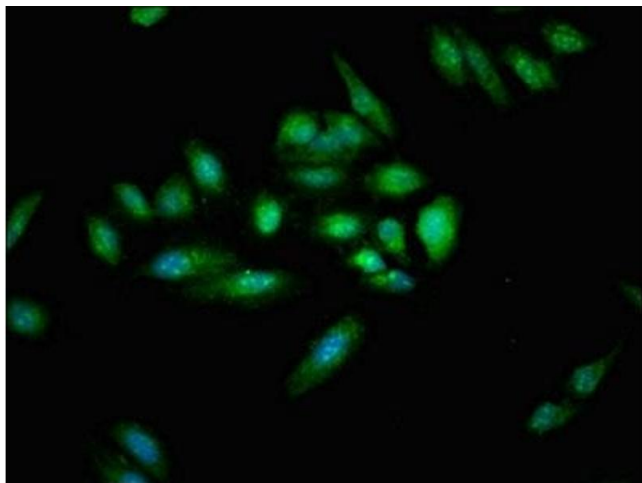
Immunohistochemistry

Image 1. Immunohistochemistry of paraffin-embedded human pancreatic cancer using ABIN7174362 at dilution of 1:100



Immunohistochemistry

Image 2. Immunohistochemistry of paraffin-embedded human breast cancer using ABIN7174362 at dilution of 1:100



Immunofluorescence

Image 3. Immunofluorescent analysis of Hela cells using ABIN7174362 at dilution of 1:100 and Alexa Fluor 488-conjugated AffiniPure Goat Anti-Rabbit IgG(H+L)