

Datasheet for ABIN7174426
anti-UBAP2L antibody (AA 104-252)[Go to Product page](#)

2 Images

Overview

Quantity:	100 µg
Target:	UBAP2L
Binding Specificity:	AA 104-252
Reactivity:	Human
Host:	Rabbit
Clonality:	Polyclonal
Conjugate:	This UBAP2L antibody is un-conjugated
Application:	ELISA, Immunohistochemistry (IHC), Immunofluorescence (IF)

Product Details

Immunogen:	Recombinant Human Ubiquitin-associated protein 2-like protein (104-252AA)
Isotype:	IgG
Cross-Reactivity:	Human
Purification:	>95%, Protein G purified

Target Details

Target:	UBAP2L
Alternative Name:	UBAP2L (UBAP2L Products)
Background:	Background: Plays an important role in the activity of long-term repopulating hematopoietic stem cells (LT-HSCs).

Target Details

Aliases: FLJ42300 antibody, KIAA0144 antibody, NICE 4 antibody, NICE4 antibody, Protein NICE-4 antibody, Protein NICE4 antibody, Ubap2l antibody, Ubiquitin associated protein 2 like antibody, Ubiquitin-associated protein 2-like antibody, UBP2L_HUMAN antibody

UniProt: [Q14157](#)

Pathways: [SARS-CoV-2 Protein Interactome](#), [The Global Phosphorylation Landscape of SARS-CoV-2 Infection](#)

Application Details

Application Notes: Recommended dilution: IHC:1:200-1:500, IF:1:50-1:200,

Restrictions: For Research Use only

Handling

Format: Liquid

Buffer: Preservative: 0.03 % Proclin 300
Constituents: 50 % Glycerol, 0.01M PBS, pH 7.4

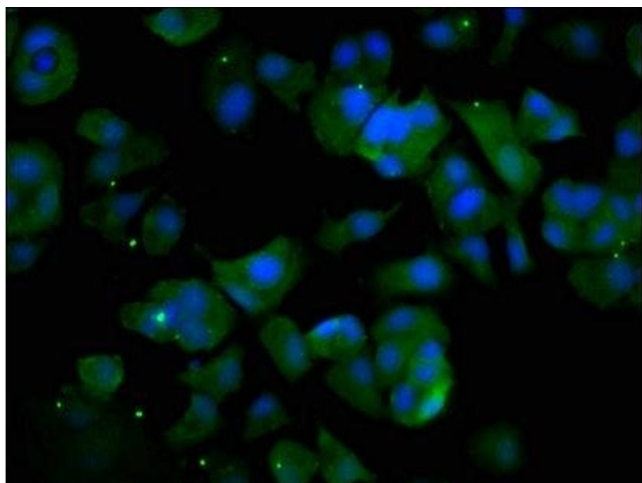
Preservative: ProClin

Precaution of Use: This product contains ProClin: a POISONOUS AND HAZARDOUS SUBSTANCE which should be handled by trained staff only.

Storage: -20 °C,-80 °C

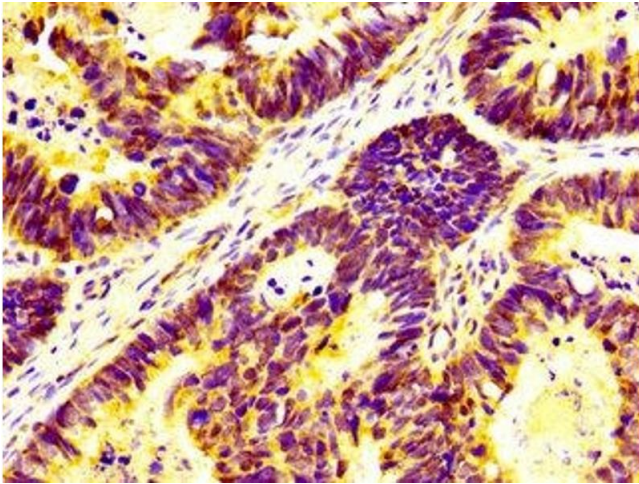
Storage Comment: Upon receipt, store at -20°C or -80°C. Avoid repeated freeze.

Images



Immunofluorescence

Image 1. Immunofluorescence staining of MCF-7 cells with ABIN7174426 at 1:133, counter-stained with DAPI. The cells were fixed in 4% formaldehyde, permeabilized using 0.2% Triton X-100 and blocked in 10% normal Goat Serum. The cells were then incubated with the antibody overnight at 4°C. The secondary antibody was Alexa Fluor 488-conjugated AffiniPure Goat Anti-Rabbit IgG(H+L).



Immunohistochemistry

Image 2. IHC image of ABIN7174426 diluted at 1:400 and staining in paraffin-embedded human ovarian cancer performed on a Leica BondTM system. After dewaxing and hydration, antigen retrieval was mediated by high pressure in a citrate buffer (pH 6.0). Section was blocked with 10% normal goat serum 30min at RT. Then primary antibody (1% BSA) was incubated at 4°C overnight. The primary is detected by a biotinylated secondary antibody and visualized using an HRP conjugated SP system.