



[Go to Product page](#)

Datasheet for ABIN7174438
anti-UBE2D2 antibody (AA 1-147)

3 Images

Overview

| | |
|----------------------|--|
| Quantity: | 100 µg |
| Target: | UBE2D2 |
| Binding Specificity: | AA 1-147 |
| Reactivity: | Human |
| Host: | Rabbit |
| Clonality: | Polyclonal |
| Conjugate: | This UBE2D2 antibody is un-conjugated |
| Application: | ELISA, Immunohistochemistry (IHC), Immunofluorescence (IF) |

Product Details

| | |
|-------------------|--|
| Immunogen: | Recombinant Human Ubiquitin-conjugating enzyme E2 D2 protein (1-147AA) |
| Isotype: | IgG |
| Cross-Reactivity: | Human |
| Purification: | >95%, Protein G purified |

Target Details

| | |
|-------------------|--|
| Target: | UBE2D2 |
| Alternative Name: | UBE2D2 (UBE2D2 Products) |
| Background: | Background: Accepts ubiquitin from the E1 complex and catalyzes its covalent attachment to other proteins. In vitro catalyzes Lys-48-linked polyubiquitination. Mediates the selective |

Target Details

degradation of short-lived and abnormal proteins. Functions in the E6/E6-AP-induced ubiquitination of p53/TP53. Mediates ubiquitination of PEX5 and autoubiquitination of STUB1 and TRAF6. Involved in the signal-induced conjugation and subsequent degradation of NFKBIA, FBXW2-mediated GCM1 ubiquitination and degradation, MDM2-dependent degradation of p53/TP53 and the activation of MAVS in the mitochondria by DDX58/RIG-I in response to viral infection. Essential for viral activation of IRF3.

Aliases: E2(17)KB2 antibody, OTTHUMP00000223475 antibody, OTTHUMP00000223476 antibody, OTTHUMP00000223477 antibody, OTTHUMP00000223478 antibody, OTTHUMP00000224375 antibody, PUBC 1 antibody, PUBC1 antibody, UB2D2_HUMAN antibody, UBC 4 antibody, UBC 4/5 antibody, UBC4 antibody, UBC4/5 antibody, UBC4/5 homolog yeast antibody, UBCH 5B antibody, UBCH5B antibody, UBE2D2 antibody, Ubiquitin carrier protein antibody, Ubiquitin carrier protein D2 antibody, Ubiquitin conjugating enzyme E2 17 kDa 2 antibody, Ubiquitin conjugating enzyme E2 D2 antibody, Ubiquitin conjugating enzyme E2D 2 (homologous to yeast UBC4/5) antibody, Ubiquitin conjugating enzyme E2D 2 (UBC4/5 homolog yeast) antibody, Ubiquitin conjugating enzyme E2D 2 antibody, Ubiquitin protein ligase D2 antibody, Ubiquitin-conjugating enzyme E2 D2 antibody, Ubiquitin-conjugating enzyme E2(17)KB 2 antibody, Ubiquitin-conjugating enzyme E2-17 kDa 2 antibody, Ubiquitin-protein ligase D2 antibody

UniProt: [P62837](#)

Pathways: [Activation of Innate immune Response](#), [Toll-Like Receptors Cascades](#)

Application Details

Application Notes: Recommended dilution: IHC:1:20-1:200, IF:1:50-1:200,

Restrictions: For Research Use only

Handling

Format: Liquid

Buffer: Preservative: 0.03 % Proclin 300
Constituents: 50 % Glycerol, 0.01M PBS, pH 7.4

Preservative: ProClin

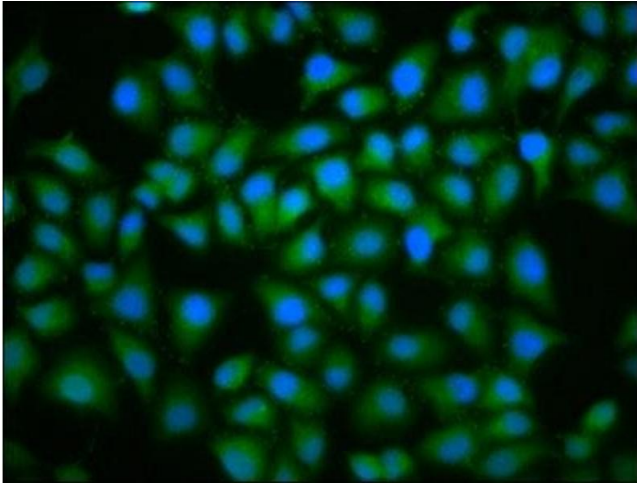
Precaution of Use: This product contains ProClin: a POISONOUS AND HAZARDOUS SUBSTANCE which should be handled by trained staff only.

Handling

Storage: -20 °C,-80 °C

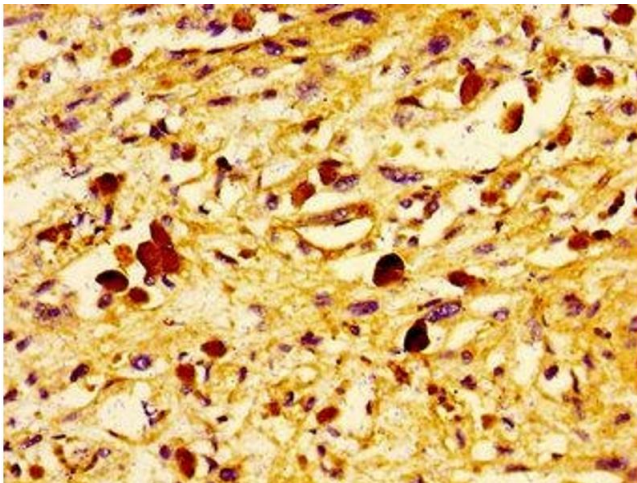
Storage Comment: Upon receipt, store at -20°C or -80°C. Avoid repeated freeze.

Images



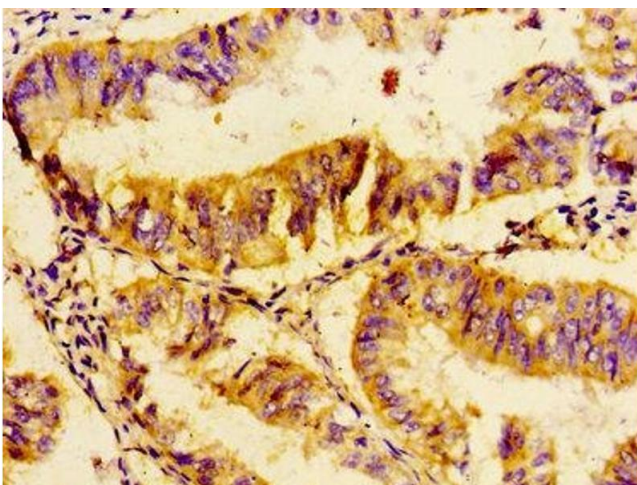
Immunofluorescence

Image 1. Immunofluorescence staining of HeLa cells with ABIN7174438 at 1:100, counter-stained with DAPI. The cells were fixed in 4% formaldehyde, permeabilized using 0.2% Triton X-100 and blocked in 10% normal Goat Serum. The cells were then incubated with the antibody overnight at 4°C. The secondary antibody was Alexa Fluor 488-conjugated AffiniPure Goat Anti-Rabbit IgG(H+L).



Immunohistochemistry

Image 2. Immunohistochemistry of paraffin-embedded human melanoma using ABIN7174438 at dilution of 1:100



Immunohistochemistry

Image 3. Immunohistochemistry of paraffin-embedded human endometrial cancer using ABIN7174438 at dilution of 1:100