

Datasheet for ABIN7174451
anti-UBE2G1 antibody (AA 2-170)

3 Images

[Go to Product page](#)

Overview

Quantity:	100 µg
Target:	UBE2G1 (Ube2g1)
Binding Specificity:	AA 2-170
Reactivity:	Human
Host:	Rabbit
Clonality:	Polyclonal
Conjugate:	This UBE2G1 antibody is un-conjugated
Application:	ELISA, Immunohistochemistry (IHC), Immunofluorescence (IF)

Product Details

Immunogen:	Recombinant Human Ubiquitin-conjugating enzyme E2 G1 protein (2-170AA)
Isotype:	IgG
Cross-Reactivity:	Human
Purification:	>95%, Protein G purified

Target Details

Target:	UBE2G1 (Ube2g1)
Alternative Name:	UBE2G1 (Ube2g1 Products)
Background:	Background: Accepts ubiquitin from the E1 complex and catalyzes its covalent attachment to other proteins. In vitro catalyzes \\Lys-48\\, as well as \\Lys-63\\-linked

Target Details

polyubiquitination. May be involved in degradation of muscle-specific proteins. Mediates polyubiquitination of CYP3A4.

Aliases: E217K antibody, UB2G1_HUMAN antibody, UBC 7 antibody, UBC7 antibody, UBC7 homolog yeast antibody, UBE 2G antibody, UBE2G antibody, Ube2g1 antibody, Ubiquitin carrier protein G1 antibody, Ubiquitin conjugating enzyme E2 G1 antibody, Ubiquitin conjugating enzyme E2G 1 (homologous to C. elegans UBC7) antibody, Ubiquitin conjugating enzyme E2G 1 (UBC7 homolog C. elegans) antibody, Ubiquitin conjugating enzyme E2G 1 (UBC7 homolog yeast) antibody, Ubiquitin conjugating enzyme E2G 1 antibody, Ubiquitin protein ligase G1 antibody, Ubiquitin-conjugating enzyme E2 G1 antibody, Ubiquitin-protein ligase G1 antibody

UniProt: [P62253](#)

Application Details

Application Notes: Recommended dilution: IHC:1:500-1:1000, IF:1:50-1:200,

Restrictions: For Research Use only

Handling

Format: Liquid

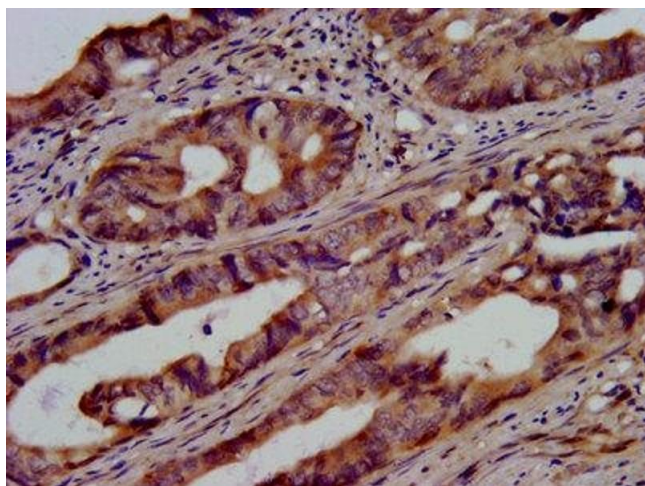
Buffer: Preservative: 0.03 % Proclin 300
Constituents: 50 % Glycerol, 0.01M PBS, pH 7.4

Preservative: ProClin

Precaution of Use: This product contains ProClin: a POISONOUS AND HAZARDOUS SUBSTANCE which should be handled by trained staff only.

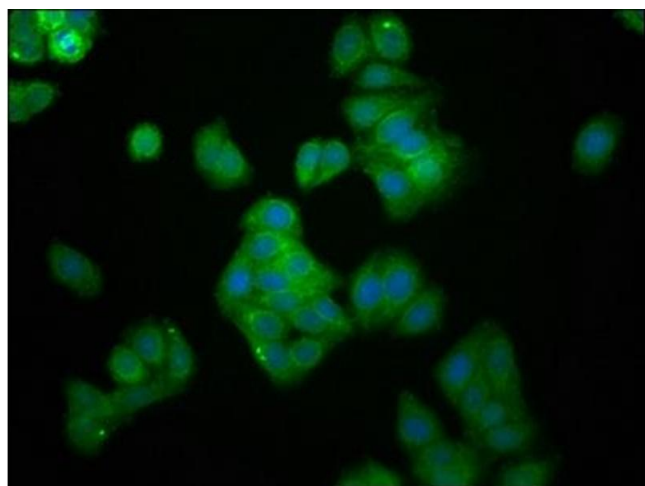
Storage: -20 °C,-80 °C

Storage Comment: Upon receipt, store at -20°C or -80°C. Avoid repeated freeze.



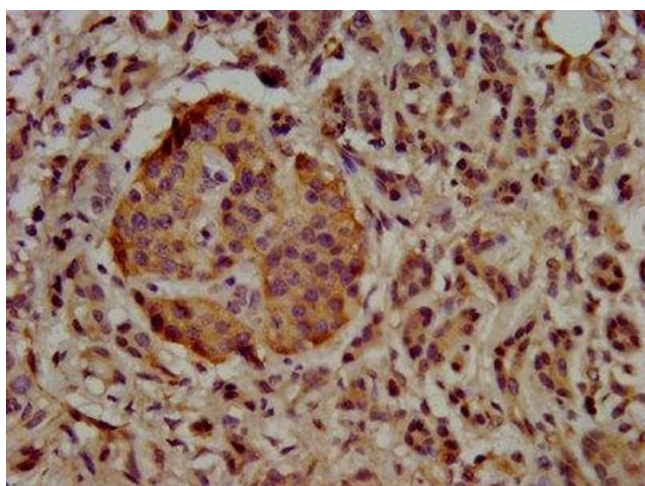
Immunohistochemistry

Image 1. IHC image of ABIN7174451 diluted at 1:500 and staining in paraffin-embedded human colon cancer performed on a Leica Bond™ system. After dewaxing and hydration, antigen retrieval was mediated by high pressure in a citrate buffer (pH 6.0). Section was blocked with 10% normal goat serum 30min at RT. Then primary antibody (1% BSA) was incubated at 4°C overnight. The primary is detected by a biotinylated secondary antibody and visualized using an HRP conjugated SP system.



Immunofluorescence

Image 2. Immunofluorescence staining of HepG2 cells with ABIN7174451 at 1:166, counter-stained with DAPI. The cells were fixed in 4% formaldehyde, permeabilized using 0.2% Triton X-100 and blocked in 10% normal Goat Serum. The cells were then incubated with the antibody overnight at 4°C. The secondary antibody was Alexa Fluor 488-conjugated AffiniPure Goat Anti-Rabbit IgG(H+L).



Immunohistochemistry

Image 3. IHC image of ABIN7174451 diluted at 1:500 and staining in paraffin-embedded human pancreatic cancer performed on a Leica Bond™ system. After dewaxing and hydration, antigen retrieval was mediated by high pressure in a citrate buffer (pH 6.0). Section was blocked with 10% normal goat serum 30min at RT. Then primary antibody (1% BSA) was incubated at 4°C overnight. The primary is detected by a biotinylated secondary antibody and visualized using an HRP conjugated SP system.