

Datasheet for ABIN7174468
anti-UBE2L3 antibody (AA 1-154)[Go to Product page](#)

4 Images

Overview

Quantity:	100 µg
Target:	UBE2L3
Binding Specificity:	AA 1-154
Reactivity:	Human
Host:	Rabbit
Clonality:	Polyclonal
Conjugate:	This UBE2L3 antibody is un-conjugated
Application:	Western Blotting (WB), Immunohistochemistry (IHC), ELISA, Immunofluorescence (IF)

Product Details

Immunogen:	Recombinant Human Ubiquitin-conjugating enzyme E2 L3 protein (1-154AA)
Isotype:	IgG
Cross-Reactivity:	Human, Mouse
Purification:	>95%, Protein G purified

Target Details

Target:	UBE2L3
Alternative Name:	UBE2L3 (UBE2L3 Products)
Background:	Background: Ubiquitin-conjugating enzyme E2 that specifically acts with HECT-type and RBR family E3 ubiquitin-protein ligases. Does not function with most RING-containing E3 ubiquitin-

Target Details

protein ligases because it lacks intrinsic E3-independent reactivity with lysine: in contrast, it has activity with the RBR family E3 enzymes, such as PARK2 and ARIH1, that function like function like RING-HECT hybrids. Accepts ubiquitin from the E1 complex and catalyzes its covalent attachment to other proteins. In vitro catalyzes \\Lys-11\\-linked polyubiquitination. Involved in the selective degradation of short-lived and abnormal proteins. Down-regulated during the S-phase it is involved in progression through the cell cycle. Regulates nuclear hormone receptors transcriptional activity. May play a role in myelopoiesis.

Aliases: E2 F1 antibody, L UBC antibody, L-UBC antibody, UB2L3_HUMAN antibody, UBCE7 antibody, Ubch7 antibody, UbcM4 antibody, Ube2l3 antibody, Ubiquitin carrier protein L3 antibody, Ubiquitin conjugating enzyme E2 L3 antibody, Ubiquitin protein ligase L3 antibody, Ubiquitin-conjugating enzyme E2 L3 antibody, Ubiquitin-conjugating enzyme E2-F1 antibody, Ubiquitin-protein ligase L3 antibody

UniProt: [P68036](#)

Application Details

Application Notes: Recommended dilution: WB:1:500-1:5000, IHC:1:20-1:200, IF:1:50-1:200,

Restrictions: For Research Use only

Handling

Format: Liquid

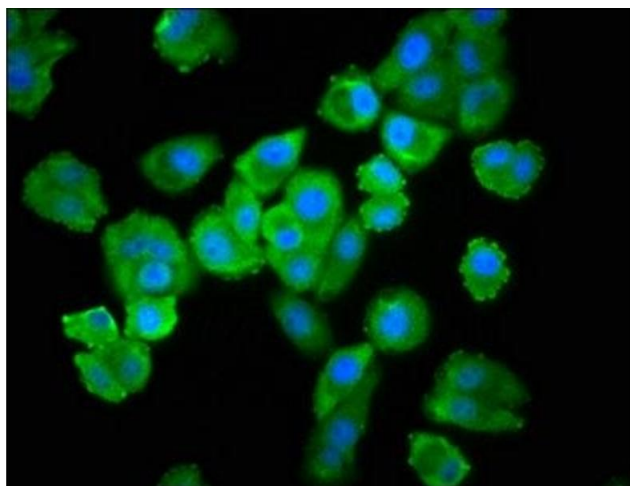
Buffer: Preservative: 0.03 % Proclin 300
Constituents: 50 % Glycerol, 0.01M PBS, pH 7.4

Preservative: ProClin

Precaution of Use: This product contains ProClin: a POISONOUS AND HAZARDOUS SUBSTANCE which should be handled by trained staff only.

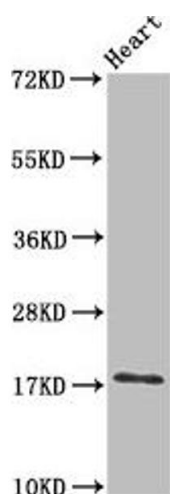
Storage: -20 °C, -80 °C

Storage Comment: Upon receipt, store at -20°C or -80°C. Avoid repeated freeze.



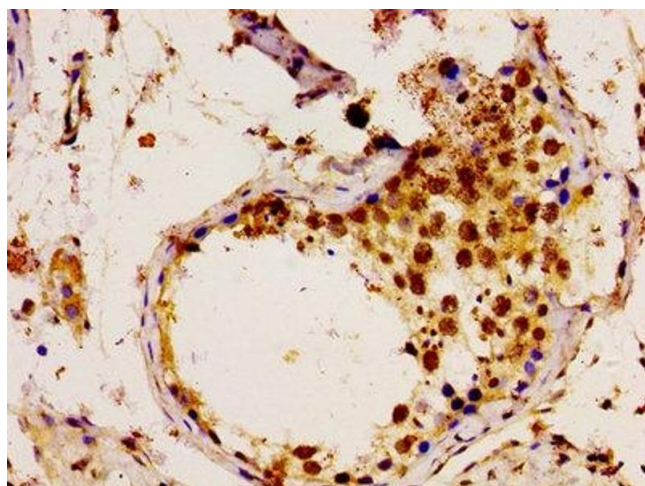
Immunofluorescence

Image 1. Immunofluorescence staining of HepG2 cells with ABIN7174468 at 1:100, counter-stained with DAPI. The cells were fixed in 4 % formaldehyde, permeabilized using 0.2 % Triton X-100 and blocked in 10 % normal Goat Serum. The cells were then incubated with the antibody overnight at 4 °C. The secondary antibody was Alexa Fluor 488-conjugated AffiniPure Goat Anti-Rabbit IgG(H+L).



Western Blotting

Image 2. Western Blot Positive WB detected in: Mouse heart tissue All lanes: UBE2L3 antibody at 3 µg/mL Secondary Goat polyclonal to rabbit IgG at 1/50000 dilution Predicted band size: 18, 15, 25 kDa Observed band size: 18 kDa



Immunohistochemistry

Image 3. Immunohistochemistry of paraffin-embedded human testis tissue using ABIN7174468 at dilution of 1:100

Please check the [product details page](#) for more images. Overall 4 images are available for ABIN7174468.