



[Go to Product page](#)

Datasheet for ABIN7174472  
**anti-UBE2N antibody (AA 20-138)**

2 Images

Overview

Quantity:	100 µg
Target:	UBE2N
Binding Specificity:	AA 20-138
Reactivity:	Human
Host:	Rabbit
Clonality:	Polyclonal
Conjugate:	This UBE2N antibody is un-conjugated
Application:	ELISA, Immunohistochemistry (IHC), Immunofluorescence (IF)

Product Details

Immunogen:	Recombinant Human Ubiquitin-conjugating enzyme E2 N protein (20-138AA)
Isotype:	IgG
Cross-Reactivity:	Human
Purification:	>95%, Protein G purified

Target Details

Target:	UBE2N
Alternative Name:	UBE2N ( <a href="#">UBE2N Products</a> )
Background:	Background: The UBE2V1-UBE2N and UBE2V2-UBE2N heterodimers catalyze the synthesis of non-canonical Lys-63-linked polyubiquitin chains. This type of polyubiquitination does not

## Target Details

---

lead to protein degradation by the proteasome. Mediates transcriptional activation of target genes. Plays a role in the control of progress through the cell cycle and differentiation. Plays a role in the error-free DNA repair pathway and contributes to the survival of cells after DNA damage. Acts together with the E3 ligases, HLTF and SHPRH, in the Lys-63-linked polyubiquitination of PCNA upon genotoxic stress, which is required for DNA repair. Appears to act together with E3 ligase RNF5 in the Lys-63-linked polyubiquitination of JKAMP thereby regulating JKAMP function by decreasing its association with components of the proteasome and ERAD. Promotes TRIM5 capsid-specific restriction activity and the UBE2V1-UBE2N heterodimer acts in concert with TRIM5 to generate Lys-63-linked polyubiquitin chains which activate the MAP3K7/TAK1 complex which in turn results in the induction and expression of NF-kappa-B and MAPK-responsive inflammatory genes.

Aliases: Bendless like ubiquitin conjugating enzyme antibody, Bendless-like ubiquitin-conjugating enzyme antibody, BLU antibody, EC 6.3.2.19 antibody, Epididymis secretory protein Li 71 antibody, HEL-S-71 antibody, Human epidermoid carcinoma mRNA for ubiquitin-conjugating enzyme E2 similar to Drosophila bendless gene product complete cds antibody, MGC131857 antibody, MGC8489 antibody, UBC 13 antibody, Ubc13 antibody, UbCH ben antibody, UbCH-ben antibody, UbCH13 antibody, UBCHBEN antibody, Ube 2N antibody, Ube2n antibody, UBE2N\_HUMAN antibody, Ubiquitin carrier protein N antibody, Ubiquitin conjugating enzyme E2 N antibody, Ubiquitin conjugating enzyme E2N (homologous to yeast UBC13) antibody, Ubiquitin conjugating enzyme E2N (UBC13 homolog yeast) antibody, Ubiquitin conjugating enzyme E2N antibody, Ubiquitin protein ligase N antibody, Ubiquitin-conjugating enzyme E2 N antibody, Ubiquitin-protein ligase N antibody, Yeast UBC13 homolog antibody

---

UniProt: [P61088](#)

---

Pathways: [TCR Signaling](#), [Fc-epsilon Receptor Signaling Pathway](#), [Activation of Innate immune Response](#), [Toll-Like Receptors Cascades](#), [Positive Regulation of Response to DNA Damage Stimulus](#), [Ubiquitin Proteasome Pathway](#)

## Application Details

---

Application Notes: Recommended dilution: IHC:1:200-1:500, IF:1:50-1:200,

---

Restrictions: For Research Use only

## Handling

---

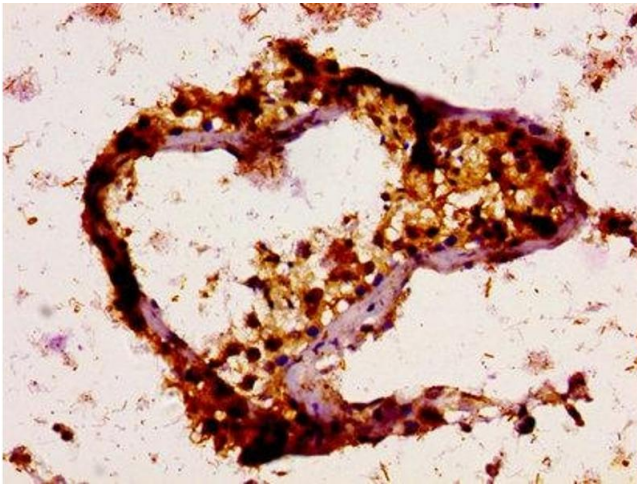
Format: Liquid

---

## Handling

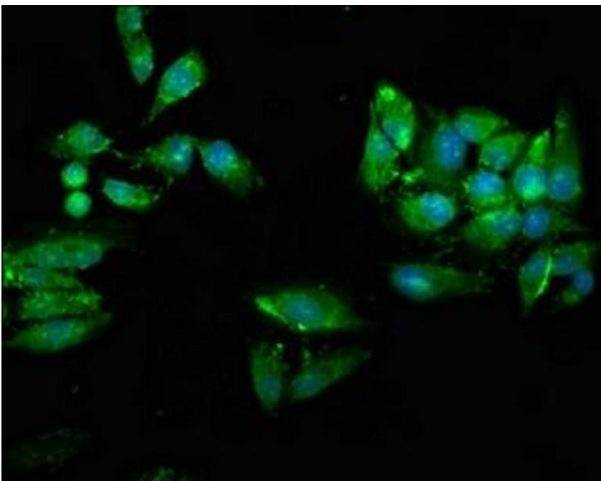
Buffer:	Preservative: 0.03 % Proclin 300 Constituents: 50 % Glycerol, 0.01M PBS, pH 7.4
Preservative:	ProClin
Precaution of Use:	This product contains ProClin: a POISONOUS AND HAZARDOUS SUBSTANCE which should be handled by trained staff only.
Storage:	-20 °C,-80 °C
Storage Comment:	Upon receipt, store at -20°C or -80°C. Avoid repeated freeze.

## Images



### Immunohistochemistry

**Image 1.** IHC image of ABIN7174472 diluted at 1:200 and staining in paraffin-embedded human testis tissue performed on a Leica Bond™ system. After dewaxing and hydration, antigen retrieval was mediated by high pressure in a citrate buffer (pH 6.0). Section was blocked with 10% normal goat serum 30min at RT. Then primary antibody (1% BSA) was incubated at 4°C overnight. The primary is detected by a biotinylated secondary antibody and visualized using an HRP conjugated SP system.



### Immunofluorescence

**Image 2.** Immunofluorescence staining of HeLa cells with ABIN7174472 at 1:66, counter-stained with DAPI. The cells were fixed in 4% formaldehyde, permeabilized using 0.2% Triton X-100 and blocked in 10% normal Goat Serum. The cells were then incubated with the antibody overnight at 4°C. The secondary antibody was Alexa Fluor 488-conjugated AffiniPure Goat Anti-Rabbit IgG(H+L).