



[Go to Product page](#)

Datasheet for ABIN7174480
anti-CDC34 antibody (AA 1-236)

1 Image

Overview

Quantity:	100 µg
Target:	CDC34
Binding Specificity:	AA 1-236
Reactivity:	Human
Host:	Rabbit
Clonality:	Polyclonal
Conjugate:	This CDC34 antibody is un-conjugated
Application:	ELISA, Immunohistochemistry (IHC)

Product Details

Immunogen:	Recombinant Human Ubiquitin-conjugating enzyme E2 R1 protein (1-236AA)
Isotype:	IgG
Cross-Reactivity:	Human
Purification:	>95%, Protein G purified

Target Details

Target:	CDC34
Alternative Name:	CDC34 (CDC34 Products)
Background:	Background: Accepts ubiquitin from the E1 complex and catalyzes its covalent attachment to other proteins. In vitro catalyzes Lys-48-linked polyubiquitination. Cooperates with the E2

Target Details

UBCH5C and the SCF(FBXW11) E3 ligase complex for the polyubiquitination of NFKBIA leading to its subsequent proteasomal degradation. Performs ubiquitin chain elongation building ubiquitin chains from the UBE2D3-primed NFKBIA-linked ubiquitin. UBE2D3 acts as an initiator E2, priming the phosphorylated NFKBIA target at positions '\Lys-21\' and/or '\Lys-22\' with a monoubiquitin. Cooperates with the SCF(SKP2) E3 ligase complex to regulate cell proliferation through ubiquitination and degradation of MYBL2 and KIP1. Involved in ubiquitin conjugation and degradation of CREM isoform ICERIIgamma and ATF15 resulting in abrogation of ICERIIgamma- and ATF5-mediated repression of cAMP-induced transcription during both meiotic and mitotic cell cycles. Involved in the regulation of the cell cycle G2/M phase through its targeting of the WEE1 kinase for ubiquitination and degradation. Also involved in the degradation of beta-catenin. Is target of human herpes virus 1 protein ICP0, leading to ICP0-dependent dynamic interaction with proteasomes.

Aliases: Cdc 34 antibody, Cdc34 antibody, Cell division cycle 34 antibody, Cell division cycle 34 homolog (*S. cerevisiae*) antibody, Cell division cycle 34 homolog antibody, E2 CDC34 antibody, UB2R1_HUMAN antibody, UBC 3 antibody, UBC3 antibody, UBCH3 antibody, UBE2 R1 antibody, UBE2R1 antibody, Ubiquitin carrier protein antibody, Ubiquitin conjugating enzyme Cdc34 antibody, Ubiquitin conjugating enzyme E2 32 kDa complementing antibody, Ubiquitin protein ligase antibody, Ubiquitin protein ligase R1 antibody, Ubiquitin-conjugating enzyme E2 R1 antibody, Ubiquitin-conjugating enzyme E2-32 kDa complementing antibody, Ubiquitin-conjugating enzyme E2-CDC34 antibody, Ubiquitin-protein ligase R1 antibody

UniProt: [P49427](#)

Application Details

Application Notes: Recommended dilution: IHC:1:20-1:200,

Restrictions: For Research Use only

Handling

Format: Liquid

Buffer: Preservative: 0.03 % Proclin 300
Constituents: 50 % Glycerol, 0.01M PBS, PH 7.4

Preservative: ProClin

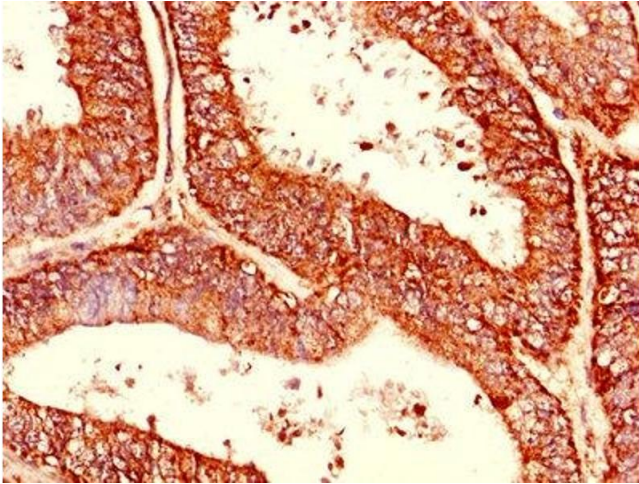
Precaution of Use: This product contains ProClin: a POISONOUS AND HAZARDOUS SUBSTANCE which should be handled by trained staff only.

Handling

Storage: -20 °C,-80 °C

Storage Comment: Upon receipt, store at -20°C or -80°C. Avoid repeated freeze.

Images



Immunohistochemistry

Image 1. Immunohistochemistry of paraffin-embedded human endometrial cancer using ABIN7174480 at dilution of 1:100