

Datasheet for ABIN7174495
anti-UBE2V2 antibody (AA 2-145)

3 Images

[Go to Product page](#)

Overview

Quantity:	100 µg
Target:	UBE2V2
Binding Specificity:	AA 2-145
Reactivity:	Human
Host:	Rabbit
Clonality:	Polyclonal
Conjugate:	This UBE2V2 antibody is un-conjugated
Application:	Western Blotting (WB), ELISA, Immunohistochemistry (IHC)

Product Details

Immunogen:	Recombinant Human Ubiquitin-conjugating enzyme E2 variant 2 protein (2-145AA)
Isotype:	IgG
Cross-Reactivity:	Human, Mouse, Rat
Purification:	>95%, Protein G purified

Target Details

Target:	UBE2V2
Alternative Name:	UBE2V2 (UBE2V2 Products)
Background:	Background: Has no ubiquitin ligase activity on its own. The UBE2V2/UBE2N heterodimer catalyzes the synthesis of non-canonical poly-ubiquitin chains that are linked through \\Lys-

Target Details

63\\'. This type of poly-ubiquitination does not lead to protein degradation by the proteasome. Mediates transcriptional activation of target genes. Plays a role in the control of progress through the cell cycle and differentiation. Plays a role in the error-free DNA repair pathway and contributes to the survival of cells after DNA damage.

Aliases: 1 alpha 25 dihydroxyvitamin D3 inducible antibody, DDVit 1 antibody, DDVIT1 antibody, EDAF-1 antibody, EDAF1 antibody, EDPF-1 antibody, EDPF1 antibody, Enterocyte differentiation associated factor EDAF 1 antibody, Enterocyte differentiation promoting factor antibody, Enterocyte differentiation-associated factor 1 antibody, Enterocyte differentiation-promoting factor 1 antibody, Methyl methanesulfonate sensitive 2 antibody, MMS 2 antibody, MMS2 antibody, MMS2 homolog antibody, UB2V2_HUMAN antibody, UBE2V 2 antibody, UBE2V2 antibody, Ubiquitin conjugating enzyme E2 variant 2 antibody, Ubiquitin conjugating enzyme E2v2 antibody, Ubiquitin-conjugating enzyme E2 variant 2 antibody, UEV 2 antibody, UEV2 antibody, Vitamin D3 inducible protein antibody, Vitamin D3-inducible protein antibody

UniProt: [Q15819](#)

Pathways: [Positive Regulation of Response to DNA Damage Stimulus](#)

Application Details

Application Notes: Recommended dilution: WB:1:500-1:5000, IHC:1:20-1:200,

Restrictions: For Research Use only

Handling

Format: Liquid

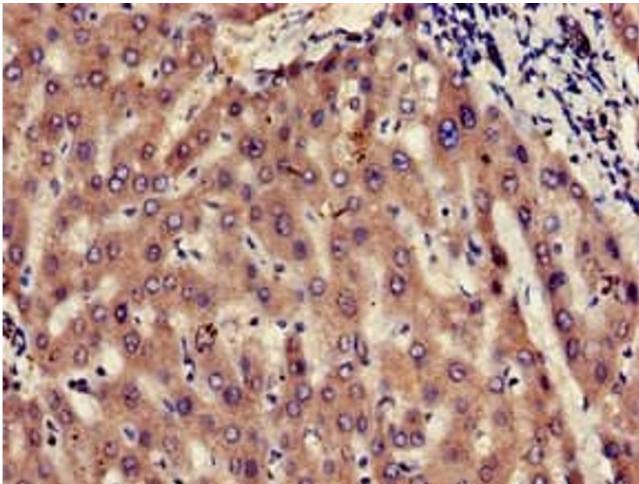
Buffer: Preservative: 0.03 % Proclin 300
Constituents: 50 % Glycerol, 0.01M PBS, pH 7.4

Preservative: ProClin

Precaution of Use: This product contains ProClin: a POISONOUS AND HAZARDOUS SUBSTANCE which should be handled by trained staff only.

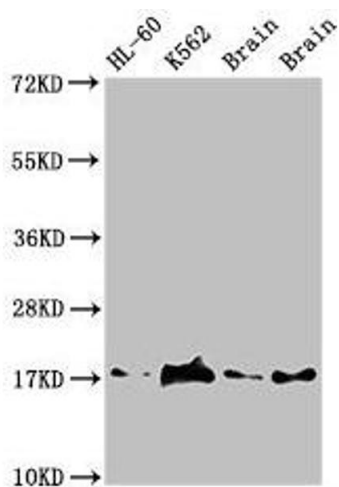
Storage: -20 °C,-80 °C

Storage Comment: Upon receipt, store at -20°C or -80°C. Avoid repeated freeze.



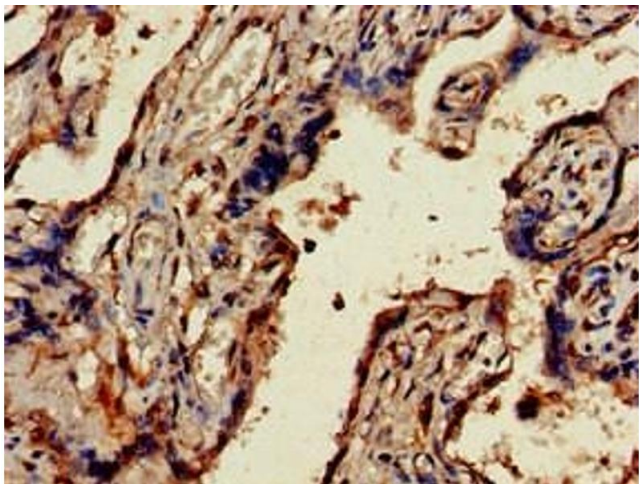
Immunohistochemistry

Image 1. Immunohistochemistry of paraffin-embedded human liver tissue using ABIN7174495 at dilution of 1:100



Western Blotting

Image 2. Western Blot Positive WB detected in: HL60 whole cell lysate, K562 whole cell lyaste, Mouse brain tissue, Rat brain tissue All lanes: UBE2V2 antibody at 1.5 µg/mL Secondary Goat polyclonal to rabbit IgG at 1/50000 dilution Predicted band size: 17 kDa Observed band size: 17 kDa



Immunohistochemistry

Image 3. Immunohistochemistry of paraffin-embedded human placenta tissue using ABIN7174495 at dilution of 1:100