



[Go to Product page](#)

Datasheet for ABIN7174506  
**anti-UBE2Z antibody (AA 115-354)**

3 Images

### Overview

Quantity:	100 µL
Target:	UBE2Z
Binding Specificity:	AA 115-354
Reactivity:	Human
Host:	Rabbit
Clonality:	Polyclonal
Conjugate:	This UBE2Z antibody is un-conjugated
Application:	Western Blotting (WB), ELISA, Immunohistochemistry (IHC)

### Product Details

Immunogen:	Recombinant Human Ubiquitin-conjugating enzyme E2 Z protein (115-354AA)
Isotype:	IgG
Cross-Reactivity:	Human
Purification:	Antigen Affinity Purified

### Target Details

Target:	UBE2Z
Alternative Name:	UBE2Z ( <a href="#">UBE2Z Products</a> )
Background:	Background: Catalyzes the covalent attachment of ubiquitin to other proteins (By similarity). Specific substrate for UBA6, not charged with ubiquitin by UBE1. May be involved in apoptosis

## Target Details

---

regulation.

Aliases: FLJ13855 antibody, GC17P044341 antibody, HOYS7 antibody, Uba6 specific E2 conjugating enzyme 1 antibody, UBA6 specific enzyme E2 antibody, Uba6-specific E2 conjugating enzyme 1 antibody, UBE2Z antibody, UBE2Z\_HUMAN antibody, Ubiquitin carrier protein Z antibody, Ubiquitin conjugating enzyme E2 Z antibody, Ubiquitin conjugating enzyme E2Z antibody, Ubiquitin protein ligase Z antibody, Ubiquitin-conjugating enzyme E2 Z antibody, Ubiquitin-protein ligase Z antibody, Use1 antibody

---

UniProt: [Q9H832](#)

## Application Details

---

Application Notes: Recommended dilution: WB:1:1000-1:5000, IHC:1:20-1:200,

Restrictions: For Research Use only

## Handling

---

Format: Liquid

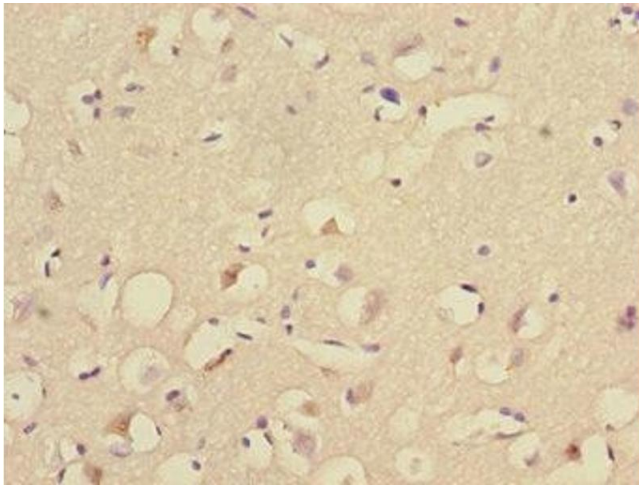
Buffer: PBS with 0.02 % sodium azide, 50 % glycerol, pH 7.3.

Preservative: Sodium azide

Precaution of Use: This product contains Sodium azide: a POISONOUS AND HAZARDOUS SUBSTANCE which should be handled by trained staff only.

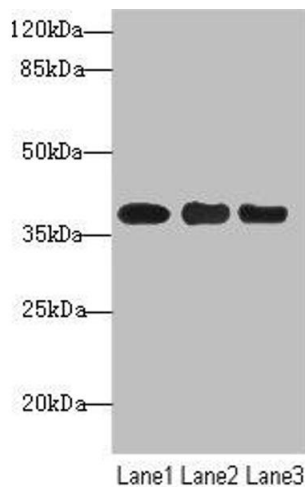
Storage: -20 °C,-80 °C

Storage Comment: Upon receipt, store at -20°C or -80°C. Avoid repeated freeze.



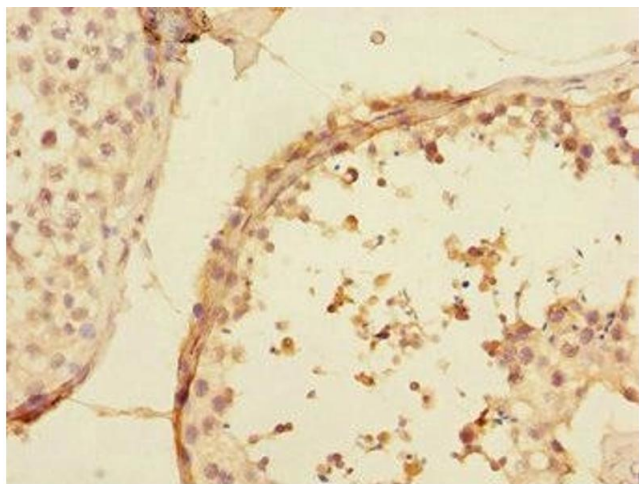
### Immunohistochemistry

**Image 1.** Immunohistochemistry of paraffin-embedded human brain tissue using ABIN7174506 at dilution of 1:100



### Western Blotting

**Image 2.** Western blot All lanes: UBE2Z antibody at 1.68  $\mu$ g/mL Lane 1: MCF-7 whole cell lysate Lane 2: HepG2 whole cell lysate Lane 3: HeLa whole cell lysate Secondary Goat polyclonal to rabbit IgG at 1/10000 dilution Predicted band size: 39, 29 kDa Observed band size: 39 kDa



### Immunohistochemistry

**Image 3.** Immunohistochemistry of paraffin-embedded human testis tissue using ABIN7174506 at dilution of 1:100