

Datasheet for ABIN7174558
anti-ISG15 antibody (AA 2-157)[Go to Product page](#)

2 Images

Overview

Quantity:	100 µg
Target:	ISG15
Binding Specificity:	AA 2-157
Reactivity:	Human
Host:	Rabbit
Clonality:	Polyclonal
Conjugate:	This ISG15 antibody is un-conjugated
Application:	Western Blotting (WB), ELISA, Immunoprecipitation (IP)

Product Details

Immunogen:	Recombinant Human Ubiquitin-like protein ISG15 protein (2-157AA)
Isotype:	IgG
Cross-Reactivity:	Human
Purification:	>95%, Protein G purified

Target Details

Target:	ISG15
Alternative Name:	ISG15 (ISG15 Products)
Background:	Background: Ubiquitin-like protein that is conjugated to intracellular target proteins after IFN-alpha or IFN-beta stimulation. Its enzymatic pathway is partially distinct from that of ubiquitin,

Target Details

differing in substrate specificity and interaction with ligating enzymes. ISG15 conjugation pathway uses a dedicated E1 enzyme, but seems to converge with the Ub conjugation pathway at the level of a specific E2 enzyme. Targets include STAT1, SERPINA3G/SPI2A, JAK1, MAPK3/ERK1, PLCG1, EIF2AK2/PKR, MX1/MxA, and RIG-1. Deconjugated by USP18/UBP43. Shows specific chemotactic activity towards neutrophils and activates them to induce release of eosinophil chemotactic factors. May serve as a trans-acting binding factor directing the association of ligated target proteins to intermediate filaments. May also be involved in autocrine, paracrine and endocrine mechanisms, as in cell-to-cell signaling, possibly partly by inducing IFN-gamma secretion by monocytes and macrophages. Seems to display antiviral activity during viral infections. Ref.12 Ref.13 Ref.14 Ref.15 Ref.20 Ref.21 In response to IFN-tau secreted by the conceptus, may ligate to and regulate proteins involved in the release of prostaglandin F2-alpha (PGF), and thus prevent lysis of the corpus luteum and maintain the pregnancy

Aliases: G1P2 antibody, hUCRP antibody, IFI 15 antibody, IFI15 antibody, Interferon alpha inducible protein antibody, Interferon induced protein 15 antibody, Interferon induced protein IFI-15K antibody, Interferon stimulated protein 15 kDa antibody, Interferon, alpha-inducible protein (clone IFI-15K) antibody, Interferon-induced 15 kDa protein antibody, Interferon-induced 17 kDa protein antibody, Interferon-induced 17- kDa/15- kDa protein antibody, IP17 antibody, ISG 15 antibody, ISG15 antibody, ISG15 ubiquitin like modifier antibody, ISG15_HUMAN antibody, Ubiquitin cross-reactive protein antibody, Ubiquitin-like protein ISG15 antibody, UCRP antibody

UniProt: [P05161](#)

Application Details

Application Notes: Recommended dilution: WB:1:1000-1:5000, IP:1:200-1:2000,

Restrictions: For Research Use only

Handling

Format: Liquid

Buffer: Preservative: 0.03 % Proclin 300
Constituents: 50 % Glycerol, 0.01M PBS, PH 7.4

Preservative: ProClin

Precaution of Use: This product contains ProClin: a POISONOUS AND HAZARDOUS SUBSTANCE which should be

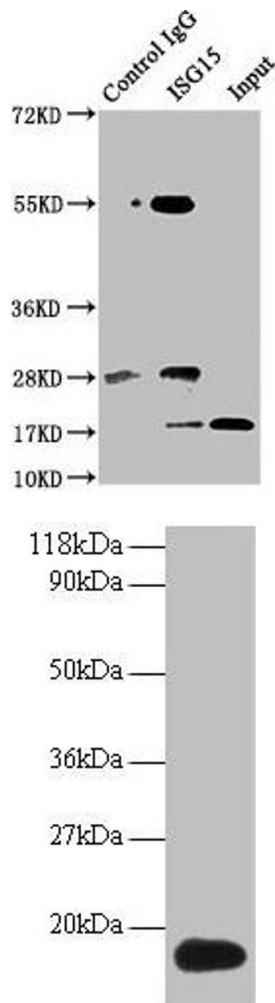
Handling

handled by trained staff only.

Storage: -20 °C,-80 °C

Storage Comment: Upon receipt, store at -20°C or -80°C. Avoid repeated freeze.

Images



Western Blotting

Image 1. Immunoprecipitating ISG15 in Hela whole cell lysate Lane 1: Rabbit control IgG instead of ABIN7174558 in Hela whole cell lysate. For western blotting, a HRP-conjugated Protein G antibody was used as the secondary antibody (1/5000) Lane 2: ABIN7174558 (8 µg) + Hela whole cell lysate (500 µg) Lane 3: Hela whole cell lysate (20 µg)

Western Blotting

Image 2. Western blot All lanes: ISG15 antibody at 2 µg/mL + 293T whole cell lysate Secondary Goat polyclonal to rabbit IgG at 1/15000 dilution Predicted band size: 18 kDa Observed band size: 18 kDa